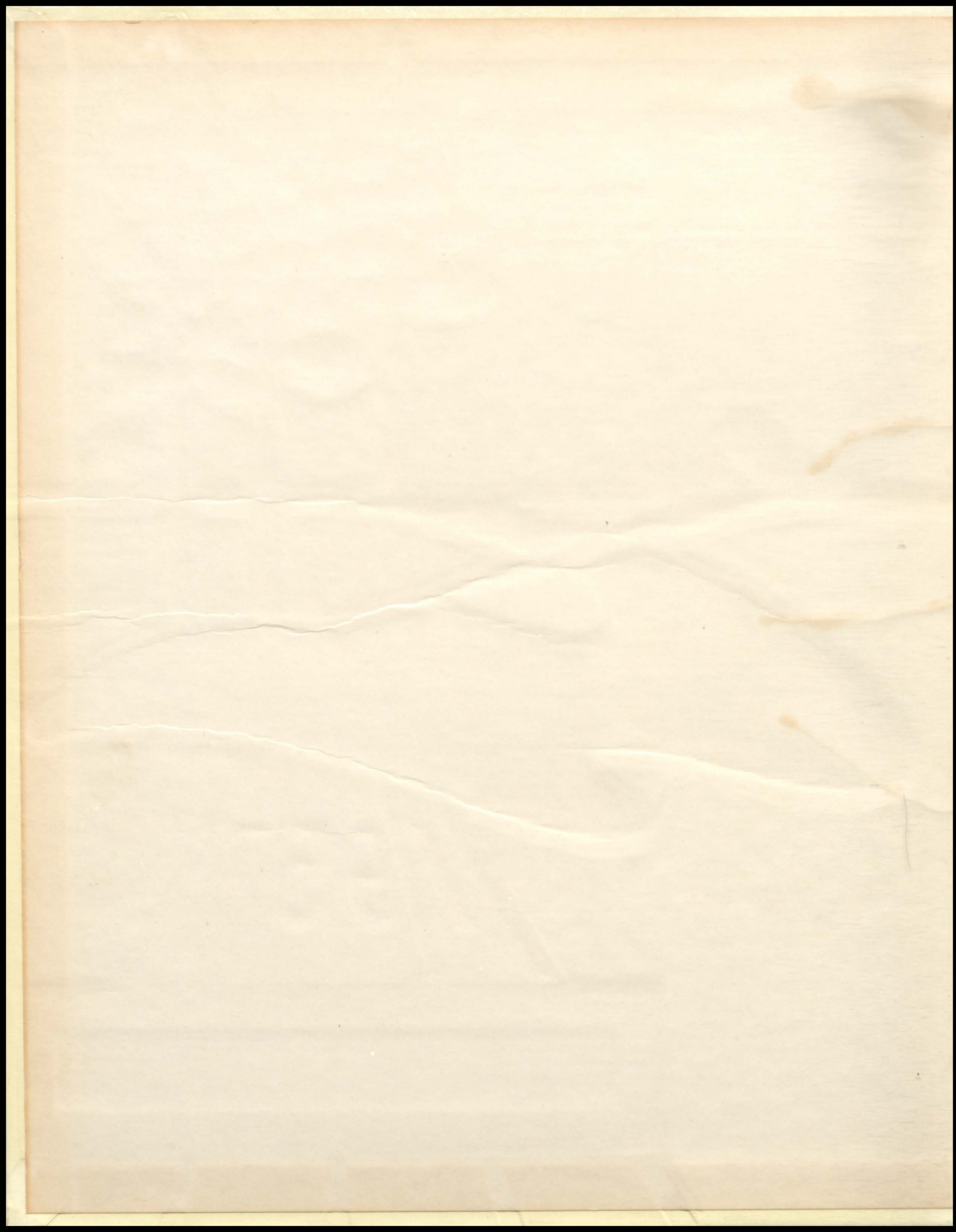
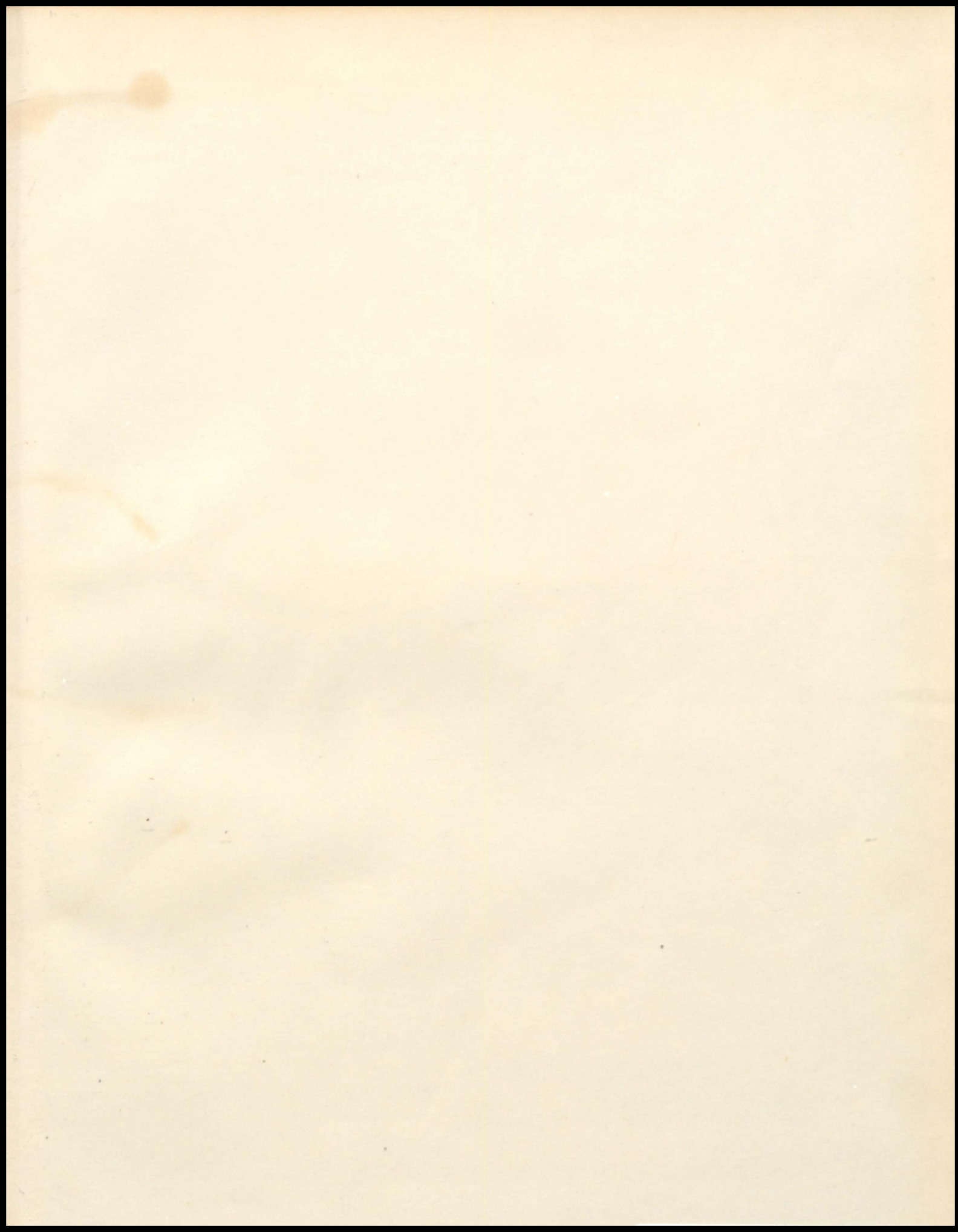
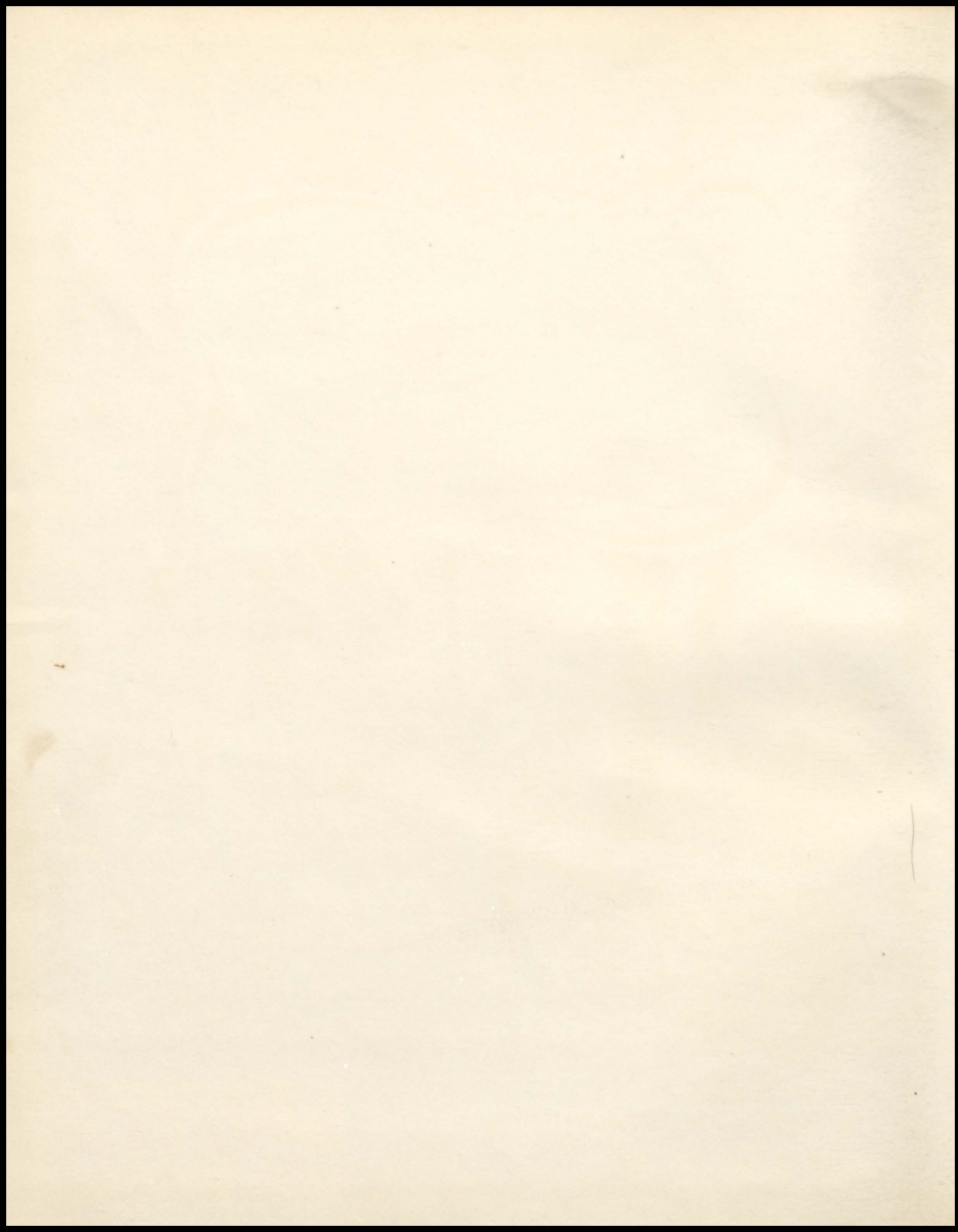



1957

THE TROJAN



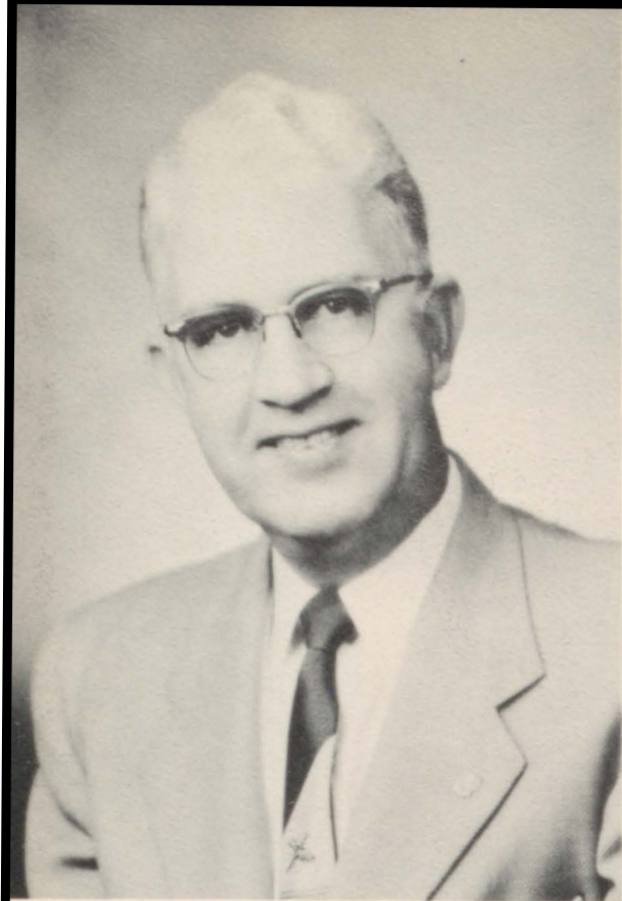






TROY HIGH SCHOOL
Troy, Kansas

THE TROJAN



M. M. GINTER
Principal

THE PRINCIPAL SAYS:

We should all understand the purpose of education and the value of it. Then we should be willing to pay the price of it.

Education is the cornerstone of Democracy. It will give America unity, diversity, prosperity, strength and character. Thomas Huxley once said, "Perhaps the most valuable results of all education is the ability to make yourself do the thing you have to do, when it ought to be done, whether you like it or not."

We must continue to increase the educational opportunities for our youth and endeavor to make our schools better if we hope to keep America strong.

Sincerely yours

A handwritten signature in cursive script that reads "M. M. Ginter".

M. M. Ginter

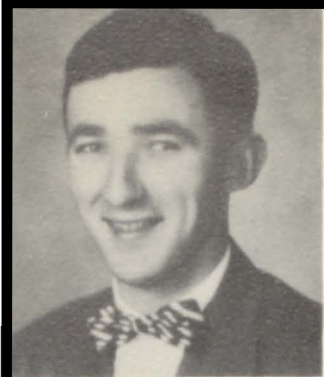


School Board

BEN WILLIAMSON
Clerk

RAY TWOMBLY
Director

LEONARD GAUL
Treasurer



FREDRICK KARL GAMPPER
B. S. from St. Benedict,
M. A. from Kansas City
University, Biology, General
Science, Physics, Chemistry,
Science Club Sponsor, Co-
Sponsor Student Council and
Junior Class, Assistant to
the Coach.



BARBARA SINCLAIR
B. S. from Kirksville Missouri
State Teachers College, English,
I, II, and III, Sponsor of
Senior Class and Annual.



FLORENCE N. RHUDY
A. B. from Kansas University,
Algebra, Plane and Solid
Geometry, Trigonometry and
Librarian, Sponsor National
Honor Society, Freshman Class
Sponsor.



ROBERT LEROY OSGOOD
B. S. from N. W. Missouri
State College, Typing,
Shorthand, Secretarial
Training, and Bookkeeping,
Co-Sponsor Senior Class and
Annual.



RILLA VOLKER
B. A. from University of
Nebraska, American History,
World History, Constitution,
Economics, Psychology, Sponsor
Sophomore Class and Pep Club.



STANLEY LARSON
B. S. from Kansas State,
Vocational Agriculture,
Industrial Arts, Sponsor
FFA and Sophomore Class.



JAMES B. WILSON
Maryville College, B. S. from
Kansas University Graduate Work,
Band, Glee Club, Mixed Chorus,
General Music, Sponsor of
Dance Band.



ANNA MARIE GOSS
B. S. from Kansas State
Home Economics I, II, and III,
and Physical Education,
Supervisor of Hot Lunch and
Concession Stands, Assistant
Junior Class Sponsor.



H. DONALD CLARK
B. S. from Pittsburg,
Industrial Arts, Drivers
Training, Head Coach,
"T" Club Sponsor.



ELLEN MORLAN WARREN
B. S. from Kansas State,
Spanish, English I, II, and
III, Play Director, Sponsor
of Trojan Trumpet and
Aficionados Del Espanol.



COOKS
Jenny Taylor - Nellie Clary



KITCHEN STUDENT HELP
Jean Knapp, Leona Miller, Kitty Ford, Jeanie Freeman



LIBRARY STAFF
Mary Lou Ruhnke - Donny King



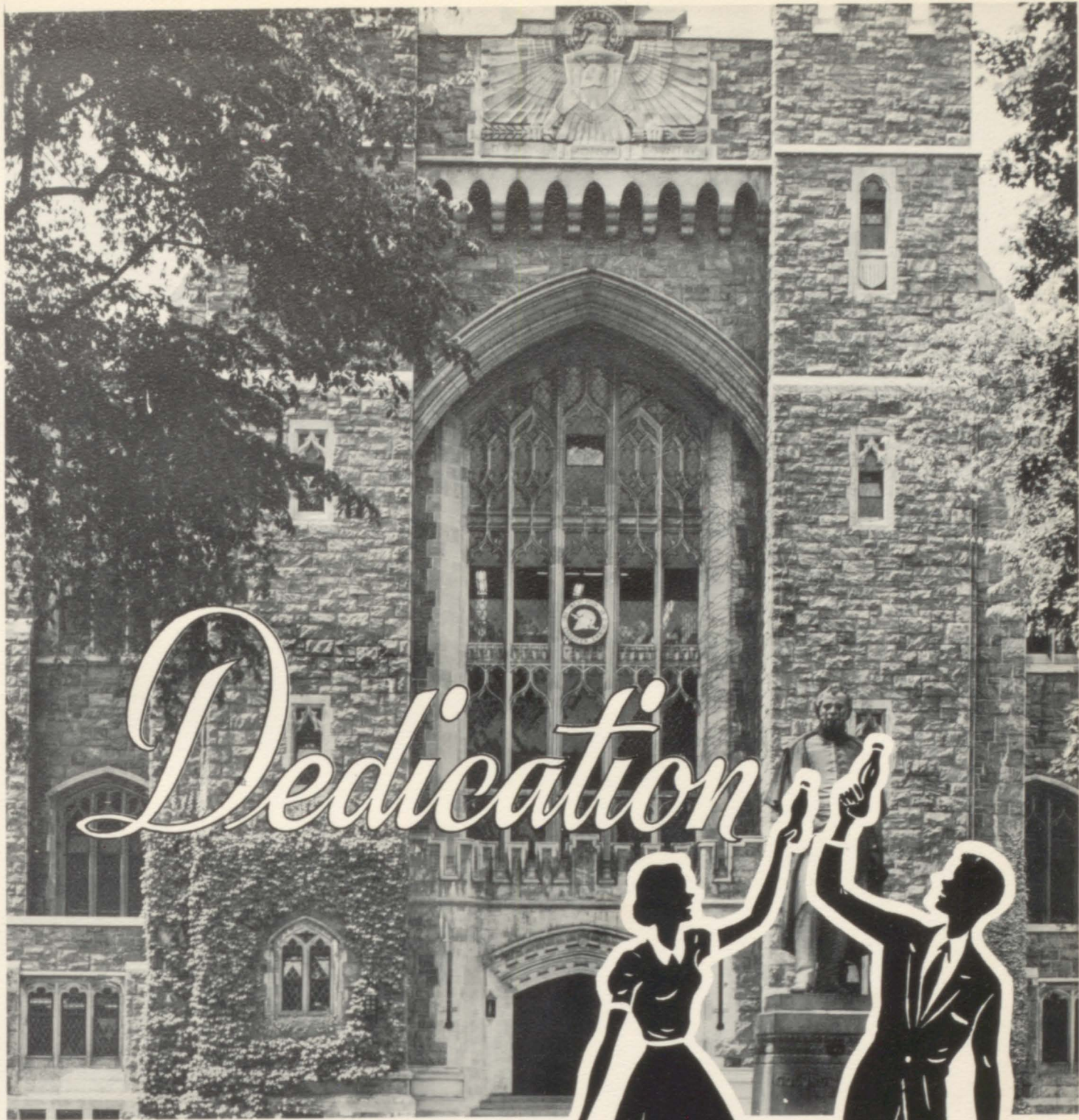
OFFICE STAFF
Carol Abbett, Sonny Mooney,
Jean Knapp, Nora Ann Ricklef

CUSTODIAN
Louie Thomas - John Thornton



BUS DRIVERS
Louie Thomas, Alfred Monroe, Alva Cluck

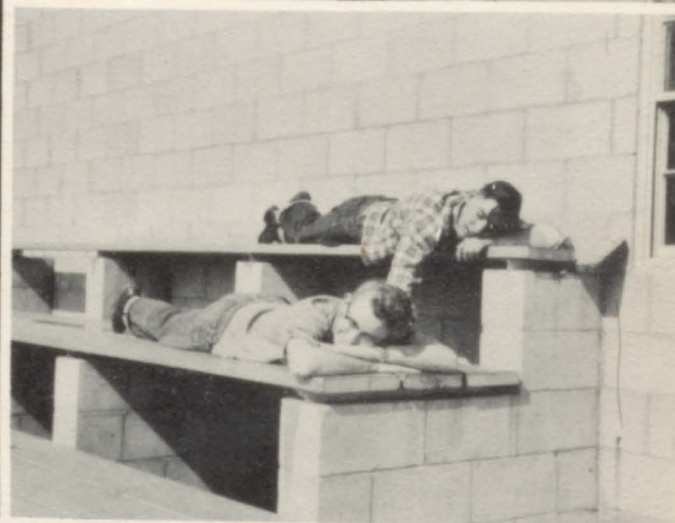




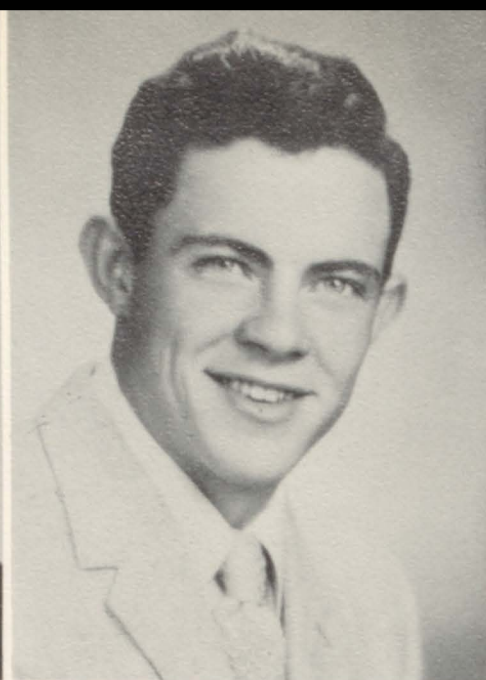
Dedication



"It's Almost Tomorrow"
Dedicated to you:
The anticipating freshman,
The confident sophomore,
The complacent junior,
And the thoughtful, determined senior.
The Trojan of 1957 presents life
At T. R. H. S. so the milestones
Of time will not dim the cherished
Memories of your school days.







CAROL JEAN ABBETT

Glee Club 1, 2, 3, 4
 Sextet 1, 2
 Pep Club 3, 4
 Secretary Pep Club 4
 Annual Staff-Class Editor 4
 Subject American History
 Ambition Housewife

LARRY ARNOLD NOCKS

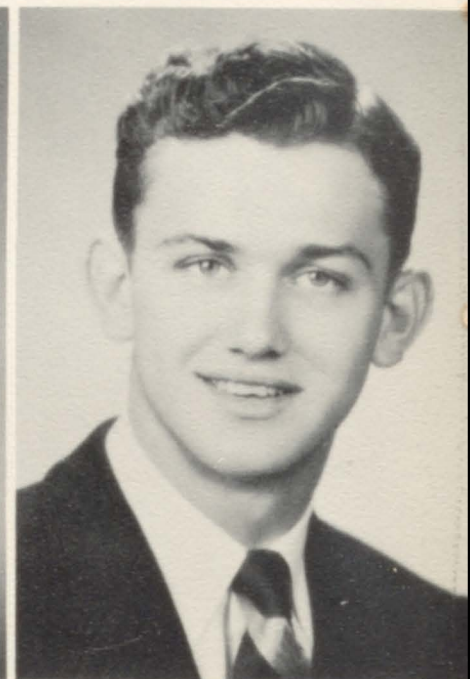
Band-Glee Club 1
 Mixed Chorus 1
 Student Council 1, 3
 Boys' State 3
 Basketball 1, 2, 3
 Football 1, 4
 Track 2, 3
 Class Reporter 4
 T-Club 4
 Science Club 4
 Sr. Play 4
 Subject Mathematics
 Ambition Electrical Engineer

MARTHA JEAN KNAPP

Band and Mixed Chorus 1, 2, 3, 4
 Glee Club 1, 2, 3
 Pep Club 1, 2, 3, 4
 Class President 1, 3
 Jr. and Sr. Play 3, 4
 Cheerleader 1, 2, 3, 4
 Student Council 1, 3, 4
 National Honor Society V.- President 4
 Annual Staff 4
 Drum Majorette 2, 3, 4
 Football Queen Attendant 4
 Subject Home Economics
 Ambition Nurse

JOHN ALDEN SIMPSON

Class Vice-President 1
 Band 1, 2, 4
 Glee Club 1, 2, 3
 Mixed Chorus 1, 2, 3, 4
 Basketball 1, 2, 3, 4
 Football 1, 2, 3, 4
 T-Club 3, 4
 Jr. and Sr. Play 3, 4
 Annual Staff 4
 Football Manager 3
 Student Council 4
 Subject American History
 Ambition School Teacher



ROSA LEE MURPHY

Glee Club 1, 2, 3
 Pep Club 1, 2, 3, 4
 Sr. Play 4
 Subject Home Economics
 Ambition Nurse

STANLEY MERLE ETHERTON

Band 1, 2, 3
 F. F. A. 1, 2, 3, 4
 F. F. A. Treasurer 3
 Sr. Play 4
 Subject Agriculture
 Ambition Farmer

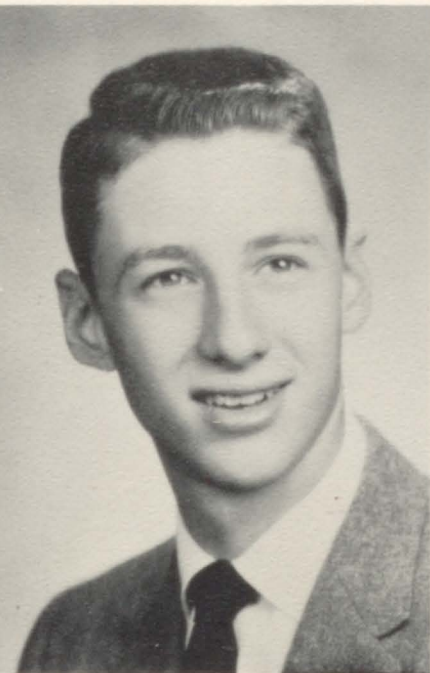
FRED ALLEN LEWIS
 Football 2, 3, 4
 T-Club 3, 4
 F.F.A. 1, 2, 3, 4
 Reporter 4
 Vice-President T-Club 4
 Class Treasurer 4
 Honorary Captain Football 4
 Subject Typing
 Ambition Diesel Mechanic

BEVERLY ANN HARNESS
 Glee Club 1, 2, 4
 Band 2, 3, 4
 Pep Club 1, 2, 3, 4
 Sr. Play 4
 Subject Typing
 Ambition School Teacher



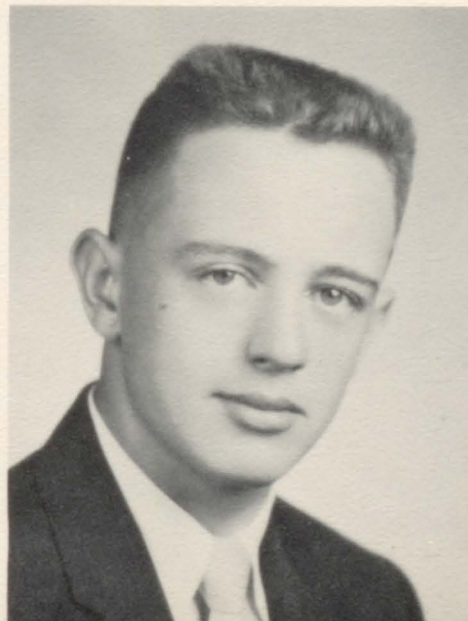
EDWARD ALBERT ZIMMERMAN
 Band, Glee Club, Mixed Chorus 1, 2, 3, 4
 Football 2
 Class Treasurer 3
 Student Council 3, 4
 Secretary-Treasurer Student Council 4
 National Honor Society 3, 4
 Treasurer 4
 Science Club President 4
 Basketball 3
 Jr. and Sr. Play 3, 4
 Music Contest 1, 2, 3, 4
 Annual Staff 4
 Trojan Trumpet Editor 4
 Subject Mathematics
 Ambition Pharmacist-Chemist

MARY LUE RUHNKE
 Band 1, 2, 3
 Pep Club 3, 4
 Subject Home Economics
 Ambition Receptionist



JAMES KIRBY QUICK
 Band 1, 2, 3, 4
 Glee Club 1, 2, 3
 T-Club 2, 3, 4
 Student Council 4
 Jr. and Sr. Play 3, 4
 Football 2, 3, 4
 Basketball 2, 3, 4
 Track 3, 4
 Trojan Trumpet Sports Editor 4
 Subject American History
 Ambition Certified Public Accountant

ELIZABETH DIANNE HUGHES
 Band, Glee Club, Mixed Chorus 1, 2, 3, 4
 Pep Club 1, 2, 3, 4
 Class Vice-President 2, 4
 Jr. and Sr. Play 3, 4
 Trio - Sextet
 Clarinet Quartet
 Subject American History
 Ambition Nurse





WANDA JEAN FREEMAN

Glee Club 1, 2, 3
 Band, Mixed Chorus 1, 2, 3, 4
 Class President 1
 Class Secretary 2
 Pep Club 1, 2, 3, 4
 Student Council Reporter 1
 Secretary 3
 Jr. and Sr. Play 3, 4
 National Honor Society 3, 4
 President 4
 Cheerleader 3, 4
 Twirler 1, 2, 4
 Annual Staff 4
 Girls' State 3
 F. F. A. Sweetheart
 Football Queen Attendant 3
 Subject Home Economics
 Ambition Home Economics Teacher

WAYNE ROBERT ALBERS

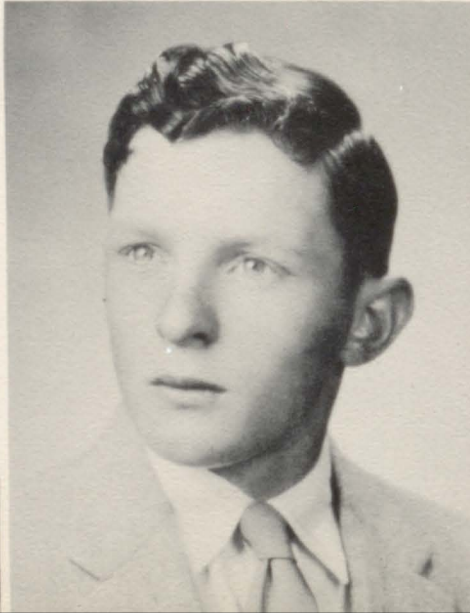
Band, Glee Club 1, 2, 3
 Class President 2
 Basketball, Football, Track 2, 3, 4
 T-Club 3, 4
 Secretary T-Club 4
 F. F. A. 2, 3, 4
 President F. F. A. 4
 Sr. Play 4
 Subject Agriculture
 Ambition Farmer

DARLENE ZELTWANGER

Glee Club 1, 2, 3
 Pep Club 3, 4
 Subject History
 Ambition Typist

ROBERT LEE BROWNLEE

Glee Club 1, 2, 3
 T-Club 4
 T-Club Reporter 4
 Football and Track 1, 2
 Sr. Play 4
 Subject Shop
 Ambition Mechanic



DEE ANNA MITCHELL

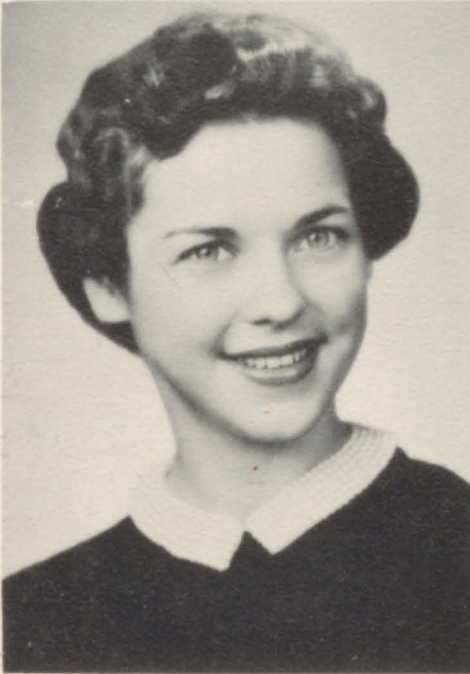
Band, Glee Club, Mixed Chorus 1, 2, 3, 4
 Cheerleader 4
 Pep Club 2, 3, 4
 Student Council 2
 Apple Blossom Queen 3
 Girls' Sextet 3
 Co-Editor School Paper 4
 Annual Staff 4
 Pep Club Treasurer 3
 Science Club 4
 National Honor Society 4
 Sr. Play 4
 Subject American History
 Ambition Dramatics Teacher

LEONARD ALLEN SHARP

F. F. A. 1, 2, 3, 4
 Chapter Farmer F. F. A.
 Track 4
 Subject Typing
 Ambition Farmer

JOY ANNE JUHL
 Band and Mixed Chorus 1, 2, 3, 4
 Glee Club 1, 2, 3
 Band Twirler 3, 4
 F. F. A. Sweetheart Attendant 4
 Annual Staff 4
 Sr. Play 4
 Subject Mathematics
 Ambition Bookkeeper

RUTH ELIZABETH WARD
 Glee Club, Mixed Chorus 1, 2, 3, 4
 Class Secretary 3, 4
 Jr. and Sr. Play 3, 4
 Annual Staff 4
 Trojan Trumpet Staff 4
 Subject Literature
 Ambition Magazine Illustrator



SHARON SUE MCKERNAN
 Pep Club 1, 2, 3, 4
 Cheerleader 2, 3, 4
 Band Twirler 1, 2
 Pep Club President 4
 Student Council 4
 Jr. and Sr. Play 3, 4
 Glee Club 1, 2, 3
 Homecoming Queen 4
 Apple Blossom Queen 4
 Annual Staff 4
 Subject Home Economics
 Ambition Housewife

MARILYN MARIE MOONEY
 Glee Club 1, 2, 3, 4
 Band 2, 3, 4
 Pep Club 1, 2, 3, 4
 Pep Club Vice-President 4
 Cheerleader 4
 Trojan Trumpet 4
 F. F. A. Queen Attendant 4
 Homecoming Queen Attendant 4
 Jr. and Sr. Play 3, 4
 Subject Typing
 Ambition Housewife

DORIS BARNHILL
 Glee Club 1, 2, 3
 Pep Club 4
 Pep Club Reporter 4
 Student Director of Jr. Play 3
 Business Manager School Paper & Annual 4
 Sr. Play 4
 Spanish Club 4
 Subject Home Economics
 Ambition School Teacher

KATHLEEN FAE CLARY
 Glee Club 1, 2, 3, 4
 Pep Club 1, 2, 3, 4
 Sr. Play Student Director 4
 Spanish Club 4
 Subject American History
 Ambition Secretary



History Class of 1957

Once upon a time, twelve years in the past, a group of children six years old started their schooling at Troy Grade School. These children are now coming to the end of their school days at Troy, they are now known as the Class of 1957, Troy High School.

This group of twenty-one children that started away back when, were guided to the Troy Grade School by their parents, who then turned them over to Mrs. Godfrey, our first grade teacher. During the year, we learned to print words, to spell c, a, t, to keep our mouths shut, usually, and to add 2 and 2 to get 3.

By the time we had started in Mrs. Zimmerman's second grade, we had lost six of our group, now becoming a unit strongly welded together called a class. These six were Shirley Blanton, Georgia Cluck, Ronald Hanlan, Bernard Hartley, Barbara Jean Martin, and Nancy Mix. But in losing those six, we gained three, so, upon entering the second step, we had an enrollment of 18, with Doris Barnhill, Dale Cluck, and Eddie Stephens as new members of our class. During this year, we learned that $2+2$ was 4 instead of 3, and that we could add an "s" to "CAT" to have more cats.

Grade three was the destination of our next step. Between grade two and grade three, somewhere, we had lost two of our class, Bobby Howland, and Kathleen Overstreet. But we fooled them, we took in four more. These were Paul Benitz, Robert Brownlee, Shirley Roland, and Nola Sparks. Mrs. Bauman taught our class of twenty to write during this year, and there were big things learned also. We learned that 4 and 4 were 8 and that little cats are kittens.

Our fourth year of school was taken under the guidance of Mrs. Horner. By this time, we had collected twenty-four students in our class. They were hard to get, though, as we lost four, to gain eight. The students we lost were Evelyn Ruffnke, Dale Cluck, Shirley Roland, and Nola Sparks. During the year, we gained the students we gained were Ronald Gardner, Connie Pollard, Evelyn Ruhnke, Barbara Stevens, Roger Studer, Gary Wheeler, Darlene Zeltwanger, and Henry Ruhnke. Mrs. Horner taught us that it was easier to multiply 3×3 than to add $3+3+3$ and we, not wanting to do any more than necessary, learned to multiply. We also improved our writing, (so she could read it.)

As we passed the fourth grade, the fifth grade was our next step. Now we were big; we were members of the upper grades. Our class was smaller that year, down to twenty-one. We had lost five of our classmates: Evelyn Ruhnke, Eddie Stephens, Barbara Stevens, Roger Studer, and Gar Wheeler, but we also gained two: Stephen Higgins, and Mary Agnes Smith. During that year, we furthered our new found skills; learning to multiply larger numbers, and to divide, to spell China and to know that to get there, we went straight through the middle of the earth.

Our sixth grade year was a breeze. Mr. Robertson was our teacher and we really had a time. But Mr. Robertson was drafted and in came Mrs. Haupt. Then we worked. She even sacrificed our play periods for us. That year, we were up to twenty-four again. We gained Myrna Anslinger, Earnest Campbell, Sandra Glasscock, Ronald Grubb, Dean Horner, and Lambert Meng. This would have given us twenty-seven, but we were unlucky, we lost three. They were Stephen Higgins, Connie Pollard, and John Simpson.

The school year 1951-1952 saw us as seventh graders. Now we were almost out of grade school, we were almost on top of the heap. This was the year we went to Topeka with the eighth grade and went through the capitol. This was the year we lost two of our class. They were; Ronald Grubb, and Henry Ruhnke. But we ended up with twenty-three, because we gained Frank Grippando. Our teacher was Mrs. Hutcherson.

Big shots, that was us. We were on top of the heap; we were in the eighth grade. Leading us this year were two teachers, Mr. Moser, in the morning, and Mrs. Haupt, in the afternoon. The largest class of our history so far was this year. We had twenty-five. Fred Lewis, Gary Moppin, Kenneth Moppin, and Thelma Routon joined our ranks, while we lost Frank Grippando and Paul Benitz. Then suddenly, as the year drew to a close, we were sad at leaving our old school and just a bit anxious to know what the next step, high school, would be like. Finally, we were graduated, and were given our entrance slips for high school.

Back to the bottom of the heap. Lowly freshmen is what we were.

As we began, we, the Class of 1957 were brought together as a group for the first time. To our class were added eleven new members; Beverly Harness, Edna Hollars, Joy Juhl, Howard Keller, Marilyn Mooney, Rosa Lee Murphy, Jim Quick, Mary Lou Ruhnke, Leonard Sharp, John Simpson, and Elizabeth Ward. Between graduating from grade school and beginning high school, we lost three members; Ruth Ann Roland, and Thelma Routon. Our class now totaled thirty-three.

As the first few weeks went by, we got to know and like each other and to stick together against those huge upperclassmen. We were initiated, nightgowns, lipstick, four-buckle overshoes, and all, and surprisingly enough, we all lived through it. The rest of our year was spent in hard study, getting acquainted, and admiring the seniors.

Our sophomore year finally came, and our class was now down to thirty-one. During our freshman year, we lost six classmates: Harold Blanton, Ronnie Gardner, Dean Horner, Lambert Meng, Howard Keller, and Gary Moppin. ~~To take up the extra~~ space, though, we gained Wayne Albers, Patsy Hoover, Thomas Long, and Dee Anna Mitchell. In our sophomore year, we were put to work harder, but as time went on, we found that our studies were not really as hard as they could be.

Then, we were Juniors; upperclassmen at last. Now we were a class of twenty-nine. We had lost three of our associates during the last year. They were Patsy Hoover, Thomas Long, and Mary Smith. Carol Abbett came to our ranks during our sophomore year. We all worked hard, earning money so we could give the seniors a nice prom. We worked at every football and basketball game, at the concession stand, and then, to be sure we had enough money, we voted to have class dues.

We gave the seniors an unforgettable prom. We gave it at the St. Francis Hotel on the evening of May 5. After a dinner and a program, a dance, complete with dance band, was held. At commencement last year, we made an aisle for the Class of 1956 and while doing this, had our first taste of nostalgia, since we had only one year left.

At the beginning of our senior year, twenty-five members of our class of twenty-nine came back. Those left behind are: Joan Blanton, Earnest Campbell, Sandra Glasscock, and Edna Hollars. As the year progressed, we lost another of our clan, Myrna Anslinger.

Finally, the year has come to an end, and with it, our twelve years of schooling. Only eight of us have been through the twelve years together. They are: Dianne Hughes, Jean Knapp, Jean Freeman, Katie Clary, Susie McKernan, Larry Nocks, Stanley Etherton, and Edward Zimmerman. For some of our class there will be more years of schooling, but for most, their school days are over. All of the happy, carefree life of school is gone, but we have made unforgettable memories and lifelong friends.

Therefore, we the Class of 1957, wish to thank you, the people of the Troy Schools, and all of our parents, for your faithful and patient help towards giving us a start in the world beyond.



Jr.



Sr.



Prom



1957



APRIL 26, 1957







Ronnie Hanlan



Leona Miller



Max Ginter



Pat Long



Jim Winder



Patty Williamson



Larry Robertson



Doris Kiger



Lawrence Sharp



Kathleen Ford



Charles King



Sandra Glasscock



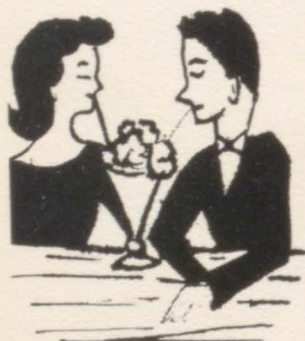
Freddie Clary

John Thomas

Nora Ann Ricklefs

Bill Oyerly

Bill Prohaska





Nancy
Weber



Fredrick
Folsche



Nelda
Bryan



Barbara
Smith



Donnie
King



Beverly
Koehler



Bill
Emory



Ada
Tharman



Dallas
Martin



JoAnn
Keller



Joe
Gronniger



Annette
Howland



Larry
Abbett



Darlene
Anslinger



Nancy
Thornton



JoAnn
Blanton





Glenda
Burkhart



Richard
Norris



John
Long



John
Weber



Betty
Abbett



Mary
Ashworth



Henry
Keller



Donna
Caton



Stephen
Foster



Sue
Gilmore



Larry
Simpson



Nancy
Ruhnke



Larry
Sandy



Norma
Ruhnke



Donald
Mullins



Ruth
Ruhnke



Floyd
Mooney



Rose Anna
Smith



David
Lichliter



Pauline
Studer



Paul
Lehman



Ina
Whetstine



Pat
Smith



Joy
Thornton

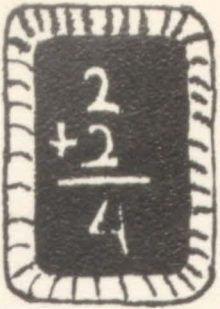


Nona
Thornton



Allen
Brownlee





Kay
Ainlay



Sue
Bryan



Donald
Gatton



Betty
Clary



Geraldine
Clary



Sharon
Davies



Bill
Davis

Not Shown
Johnnie
Christensen



Billy
Foster



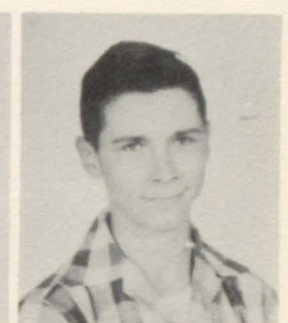
Larry
Gardner



Ida
Howland



Shirley
King



Bill
Kinkead

Bernard
Koehler



Irene
Lehman



Saudra
Losson





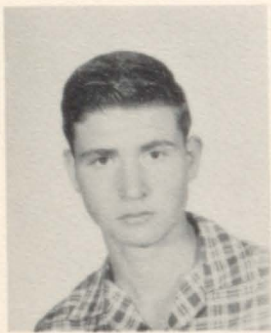
Leona
Hutton



John
Marriott



Jerry
Murphy



Gerald
Myers



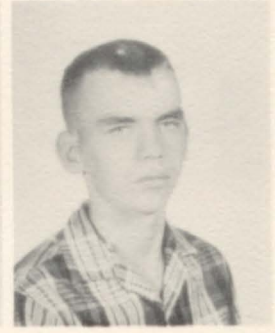
Raymond
Prohaska



Mickey
Rockey



Ronnie
Ruhnke



Jerry
Sharp



Margaret
Sharp



Donna
Thornton



Jack
Thornton



Sharon
Thornton



Harold
Whitten



Gary
Winder



Mary
Winkel



Violet
Winkel



Donald
Wykert





Activities



*Apple Blossom Queen
Susie McKernan*



"Halloween Queen 1956"
Beverly Koelher



Drum Majorettes



JEANIE FREEMAN

JEANIE KNAPP

JOY JUHL

"Troy High School Band"



THIRD ROW: Left to Right: Beverly Harness, Mary Howard, Jean Knapp, Jean Freeman, Jimmie Clark, Mary Pat Gray, Marilyn Mooney, J. B. Wilson, Director, Mike Williamson, Richard Norris, Jim Quick, Kathy Studer, Stephen Mitchell, David Lichter, John Simpson, Nora Ricklefs. SECOND ROW: Nancy Weber, Ada Marie Tharman, Fredrick Folsche, Bill Emory, Jim Winder, Nancy Ruhnke, Robbie Kuhnert, Jimmy Etherton, Sue Gilmore, Betty Abbett, John Weber, Edward Zimmerman. FIRST ROW: Dianne Hughes, Dee Anna Mitchell, Johnny Quick, Joy Juhl, Glenda Burkhart, Patty Williamson.

OFFICERS

BACK ROW: Left to Right; Nora Ann Ricklefs, librarian, Edward Zimmerman, president, Dianne Hughes, librarian, FRONT ROW: Nancy Weber, secretary-treasurer, Dee Anna Mitchell, vice-president. Not pictured; Jeanie Freeman, student council representative.



TRUMPET TRIO



BRASS SEXTET



DANCE BAND



CLARINET QUARTET



"Mixed Chorus"



BACK ROW: Left to Right: Diann^o Hughes, Marilyn Mooney, Carol Abbott, Sue Gilmore, Jim Quick, Fredrick Folsche, John Weber, Jim Winder, Nora Ricklefs, Nancy Weber, Elizabeth Ward, Dee Anna Mitchell. FRONT ROW: J. B. Wilson, Director, Susie Bryan, Shirley King, Joy Juhl, David Lichliter, Edward Zimmerman, Larry Abbott, Glenda Burkhart, Jean Knapp, Jay Ainlay, Mary Jane Ashworth, Jean Freeman, Accompanist.

"Mixed Sextet"

LEFT to RIGHT: Edward Zimmerman, Jim Quick, Patty Williamson, Jeanie Freeman, Jeanie Knapp, Nancy Weber.



Girls' Glee Club



BACK ROW: Left to Right; Betty Abbett, Elizabeth Ward, Shirley King, Sandra Losson, Katie Clary, Glenda Burkhart, Marilyn Mooney, Violet Winkle, Kay Ainlay. FRONT ROW: Susie Bryan, Patty Smith, Sharon Davies, Mary Jane Ashworth, Donna Thornton, Patsy Long, Ida Howland, Sharon Thornton, J. B. Wilson, Director, Dianne Hughes, Accompanist.

Girls' Sextet

LEFT to RIGHT: Dianné Hughes, Marilyn Mooney, Elizabeth Ward, Mary Jane Ashworth, Glenda Burkhart, Nancy Weber.



Girls' Trio

LEFT to RIGHT: Pat Long, Jean Freeman, Jean Knapp.





Senior Play

Junior Play



League Play



N. H. S.



FIRST ROW: Left to Right; Miss Rhudy, Sponsor; Jean Freeman, President; Pat Long, Secretary; Dee Anna Mitchell, Jean Knapp, Vice-President. SECOND ROW: Edward Zimmermān, Treasurer; Nancy Weber, Fredrick Folsche, Reporter; Patty Williamson, Johnny Thomas.

Student Council



THIRD ROW: Left to Right; Larry Robertson, Mr. F. Gampper, faculty advisor; John Weber, Fredrick Folsche, Jim Quick, Sue Gilmore, Ronnie Ruhnke. SECOND ROW: Patsy Long, Carolyn Ainlay, Jean Knapp, Jeanie Freeman, Dee Anna Mitchell, Mrs. J. Goss, faculty advisor; Susie McKernan. FIRST ROW: Mr. M. M. Ginter, faculty advisor, John Simpson, sergeant-at-arms; Wayne Albers, president, Ronnie Hanlan, vice-president; Edward Zimmermān, secretary-treasurer.



Trumpet Staff



Trojan

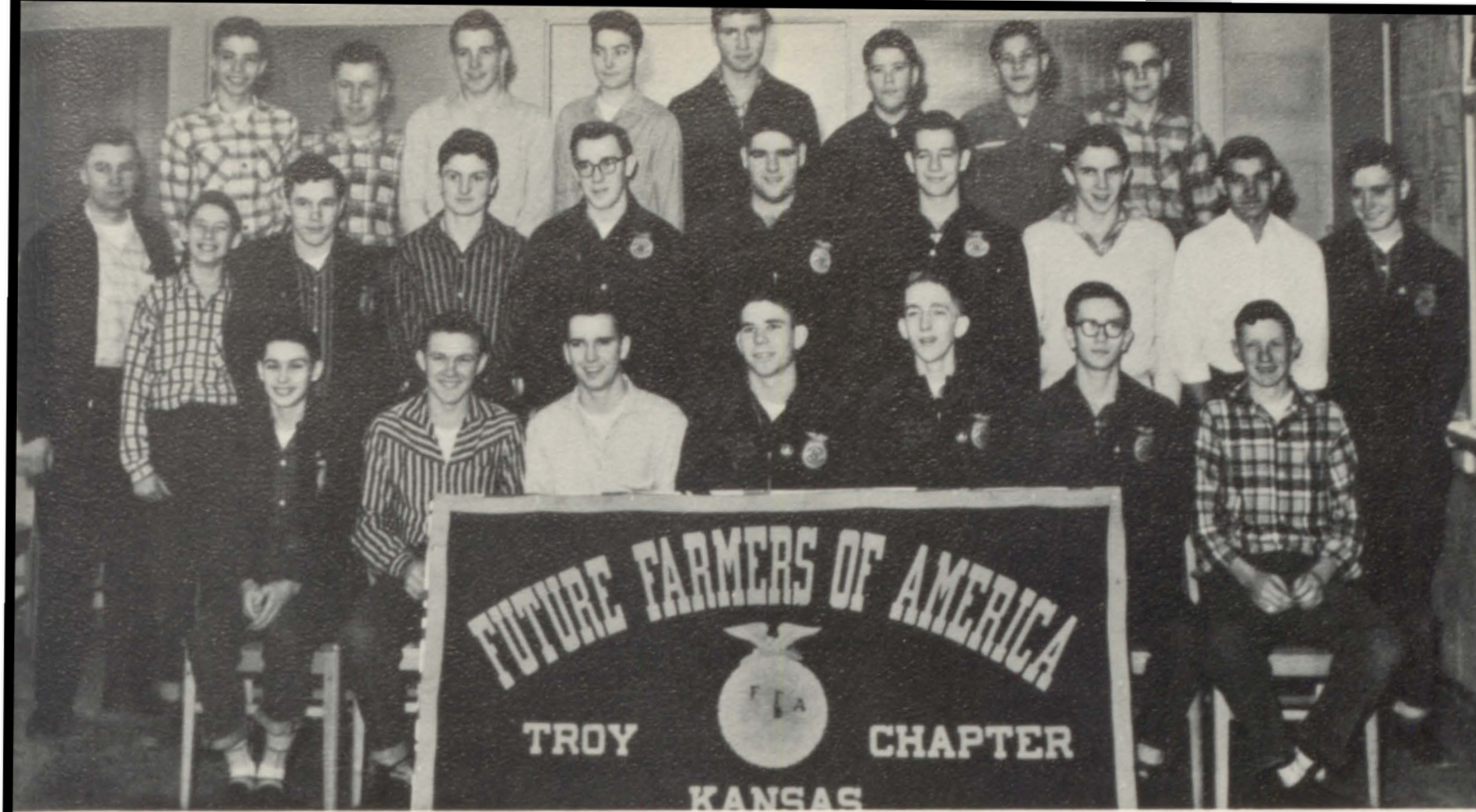
Annual Staff



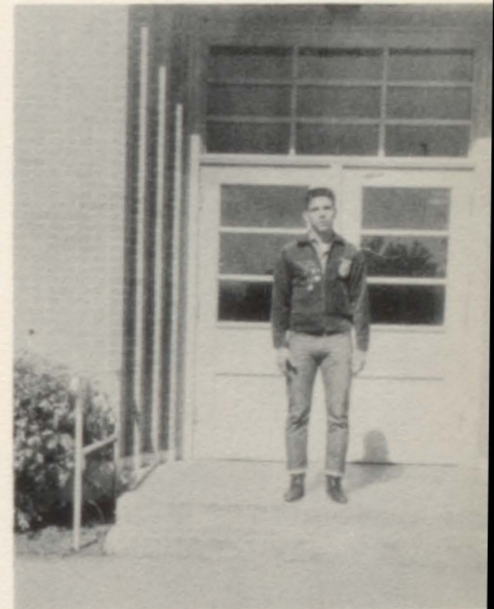
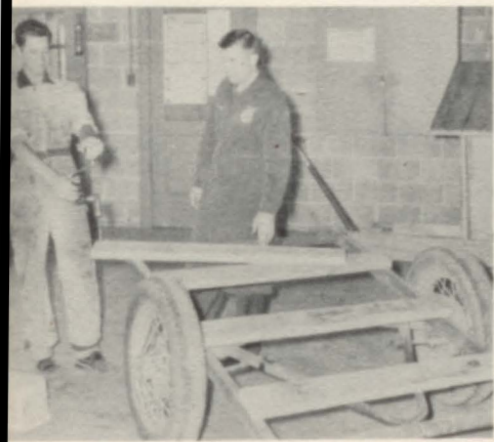
Science Club

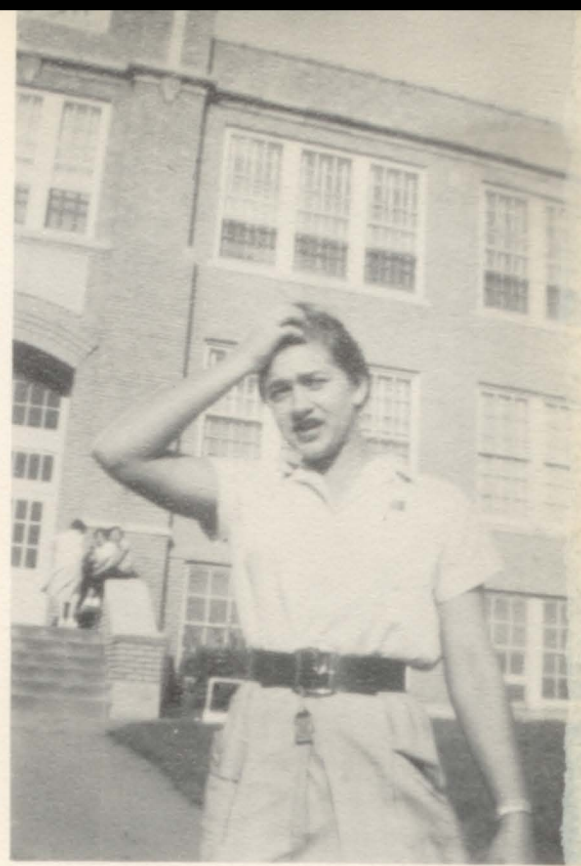
BACK ROW: Left to Right; Stephan Foster, Sonny Mooney, Mr. F. Gampper, sponsor. THIRD ROW: John Weber, Bill Emory, Larry Sandy. SECOND ROW: Joe Gronniger, Max Ginter, Jim Quick. FIRST ROW: Dee Anna Mitchell, secretary-treasurer; Edward Zimmerman, president; Larry Nocks, vice-president.





BACK ROW: Left to Right; Ronni Ruhnke, Harold Whitten, Gary Winder, Jerry Murphy, Gerald Myers, Donnie Mullins, Henry Keller, Lawrence Sharp. SECOND ROW: Mr. Stanley Larson, Faculty Advisor, Billy Foster, Larry Robertson, Larry Abbett, Dallas Martin, Bill Oyerly, Allan Brownle, Paul Lehman, Richard Norris, Stanley Etherton. FRONT ROW: Larry Sandy, Sentinel; Donald King, Treasurer; Fred Lewis, Reporter; Wayne Albers, President; Fredrick Folsche, Vice-President; John Thomas, Secretary; Leonard Sharp, Jim Winder, (not pictured.)







Sports



Cheerleaders



Dee Anna Mitchell

Jeanie Freeman

Jeanie Knapp

Susie McKernan

Marilyn Mooney



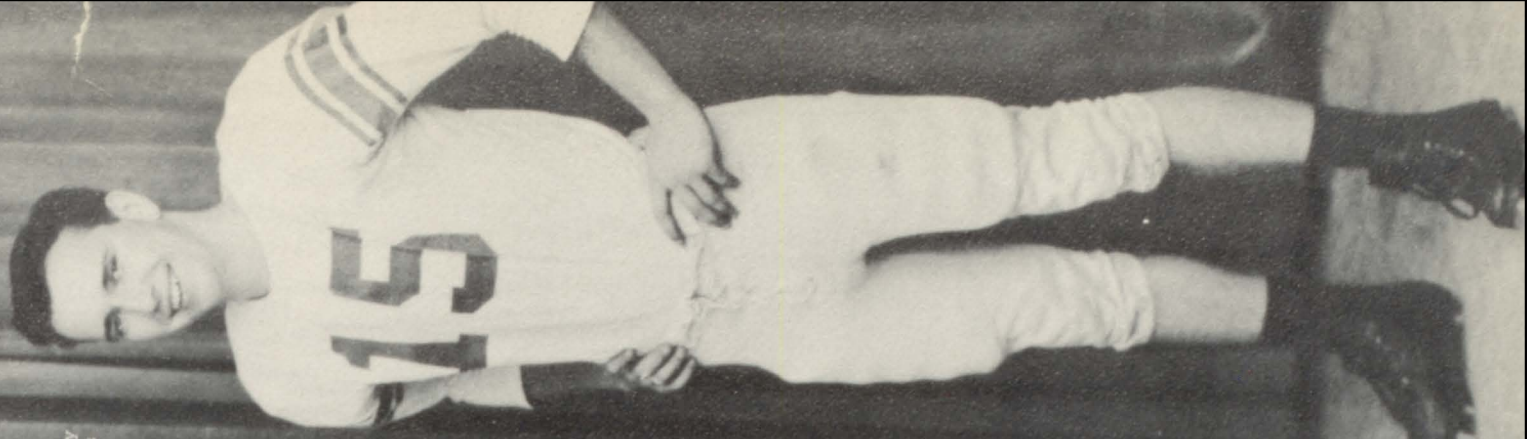
Ronnie Hanlan



Wayne Albers



Micke Rocky



Freddy Lewis

"Team Captains"

Pep Club

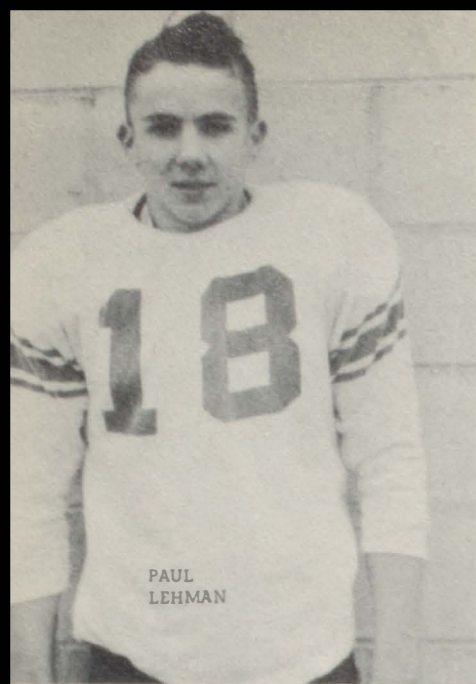
BACK ROW: Left to Right: Donna Thornton, Norma Del Ruhnke, Pauline Studer, Nona Thornton, Dianne Hughes, Sue Gilmore, Katie Clary, Nora Ann Rucklefs, Nancy Weber, Patty Williamson, Nancy Ruhnke, Carol Abbott, secretary, Joy Juhl, Rosa Lee Murphy, Darlene Zeltwanger, Mrs. R. Volker, sponsor, SECOND ROW: Sharon Thornton, Shirley King, Sandra Glasscock, Kitty Ford, Mary Jane Ashworth, Ida Rae Howland, Joy Thornton, Jo Ann Keller, Beverly Koehler, Mary Lou Ruhnke, Nelda Bryan, Doris Kiger, Beverly Harness, Dotis Barnhill, reporter, Betty Abbott, Susie Bryan, B-TEAM CHERLEADERS: Kay Ainlay, Glenda Burkhart, Ada Marie Tharman, A-TEAM CHERLEADERS: Jean Freeman, Dee Anna Mitchell, treasurer, Susie McKernan, president, Marilyn Mooney, vice-president, Jean Knapp, student council representative.



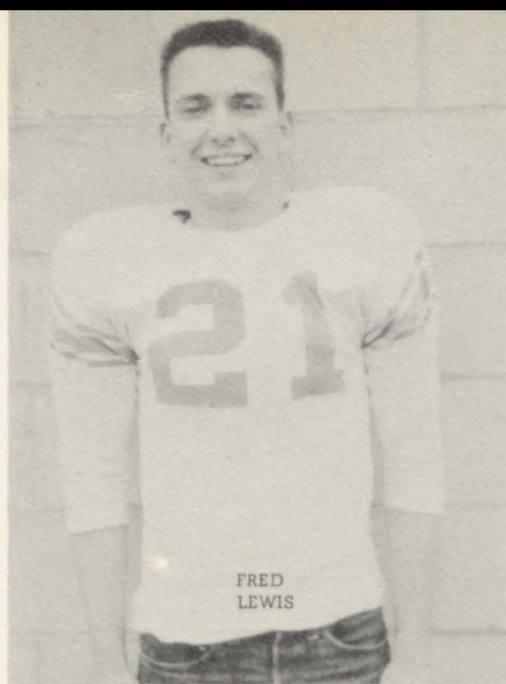
"J Club"

THIRD ROW: Left to Right: John Thomas, Gerald Myers, Ronnie Rühnke, Larry Sandy, Max Ginter, Mickey Rockey, Leonard Sharp, Joe Grommiger, Lawrence Sharp, Sonny Mooney, Richard Norris, Larry Gardner, SECOND ROW: Bill Prohaska, Allan Brownlee, Larry Abbott, Bill Emory, Donald King, Bill Oyerly, John Weber, Bob Brownlee, Paul Lehman. FIRST ROW: Jim Winder, sergeant-at-arms; Wayne Albers, secretary; Fred Lewis, vice-president; Ronnie Hamlan, president; Jim Quick, student council representative; Larry Robertson, reporter; Mr. D. Clark, sponsor. Not pictured; John Simpson, Stanley Ethernon, Larry Nocks.





PAUL
LEHMAN



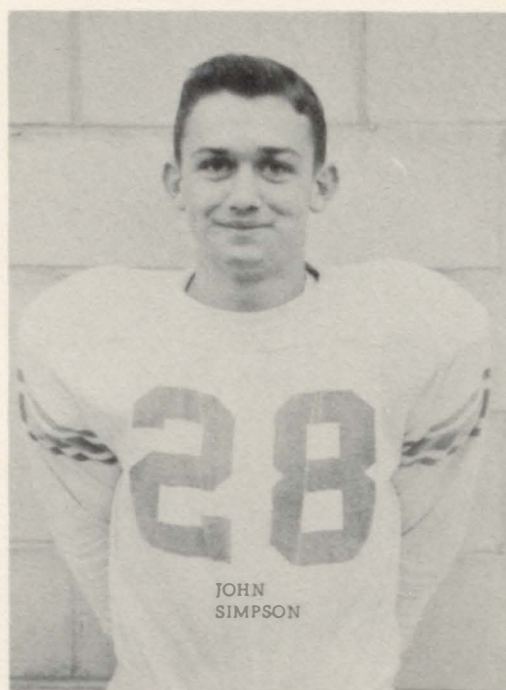
FRED
LEWIS



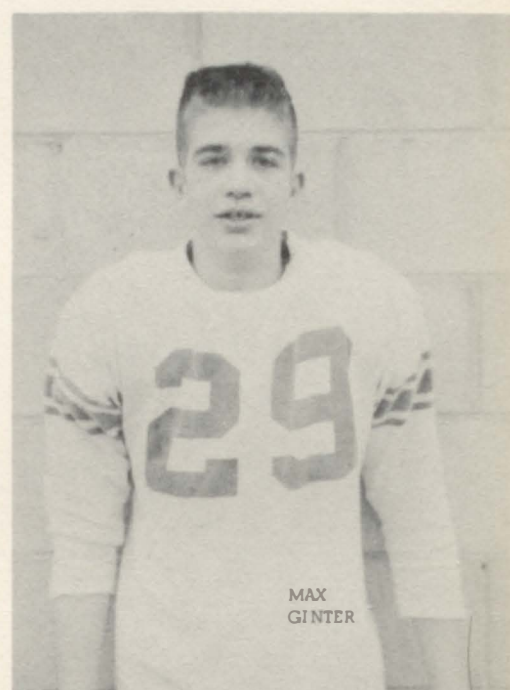
LARRY
ROBERTON



LARRY
NOCKS



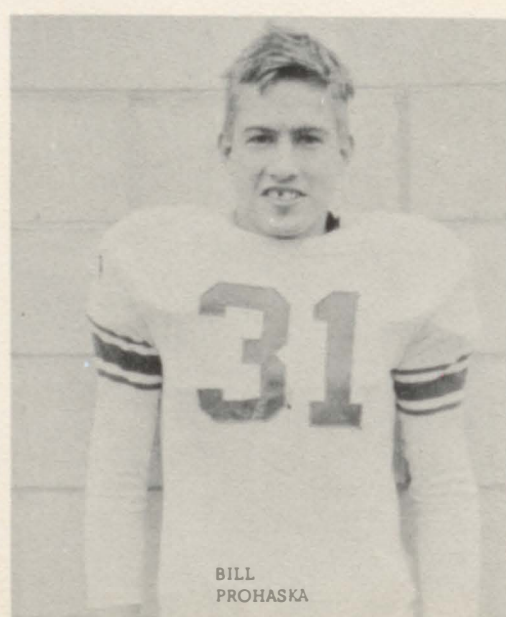
JOHN
SIMPSON



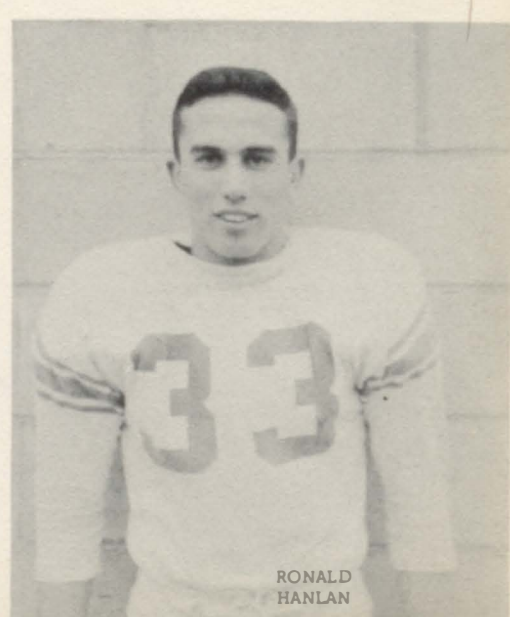
MAX
GINTER



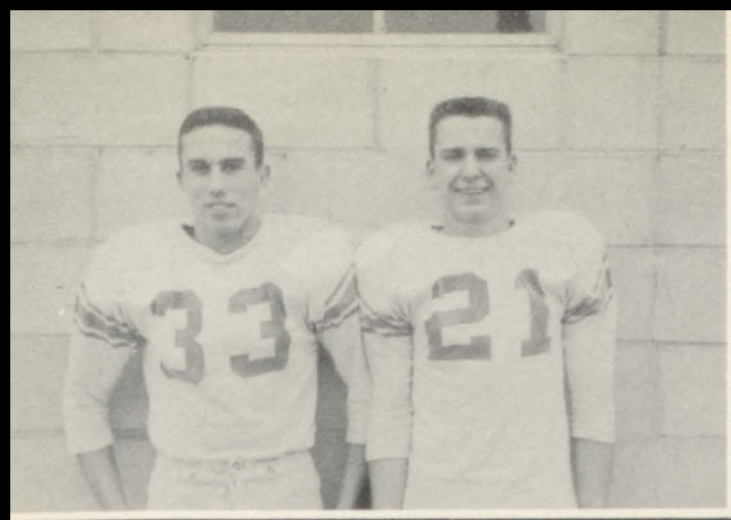
JIM
WINDER



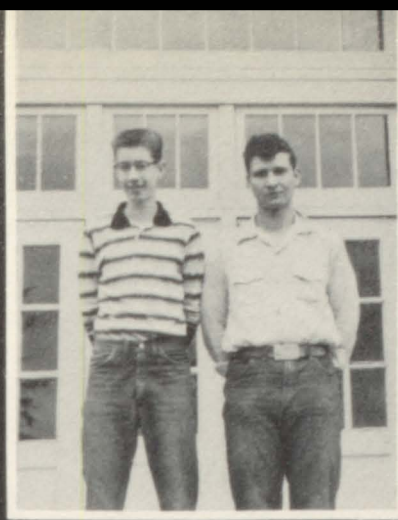
BILL
PROHASKA



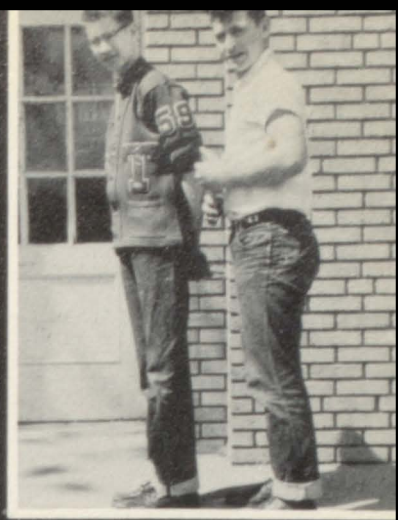
RONALD
HANLAN



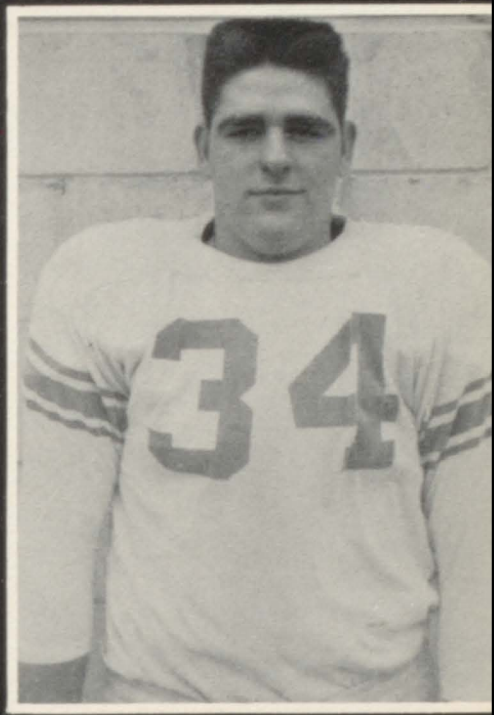
CO-CAPTAINS
Ronald Hanlan and Fred Lewis



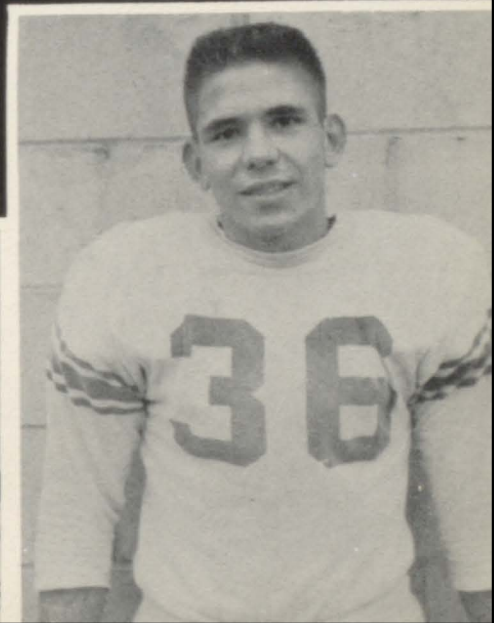
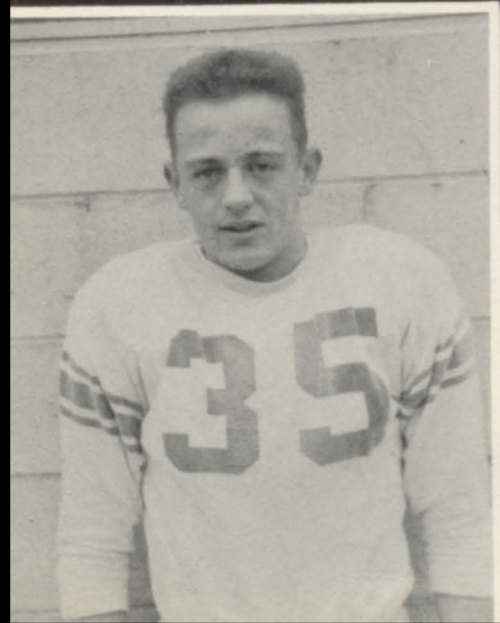
MANAGERS
John Weber and Gerald Myers

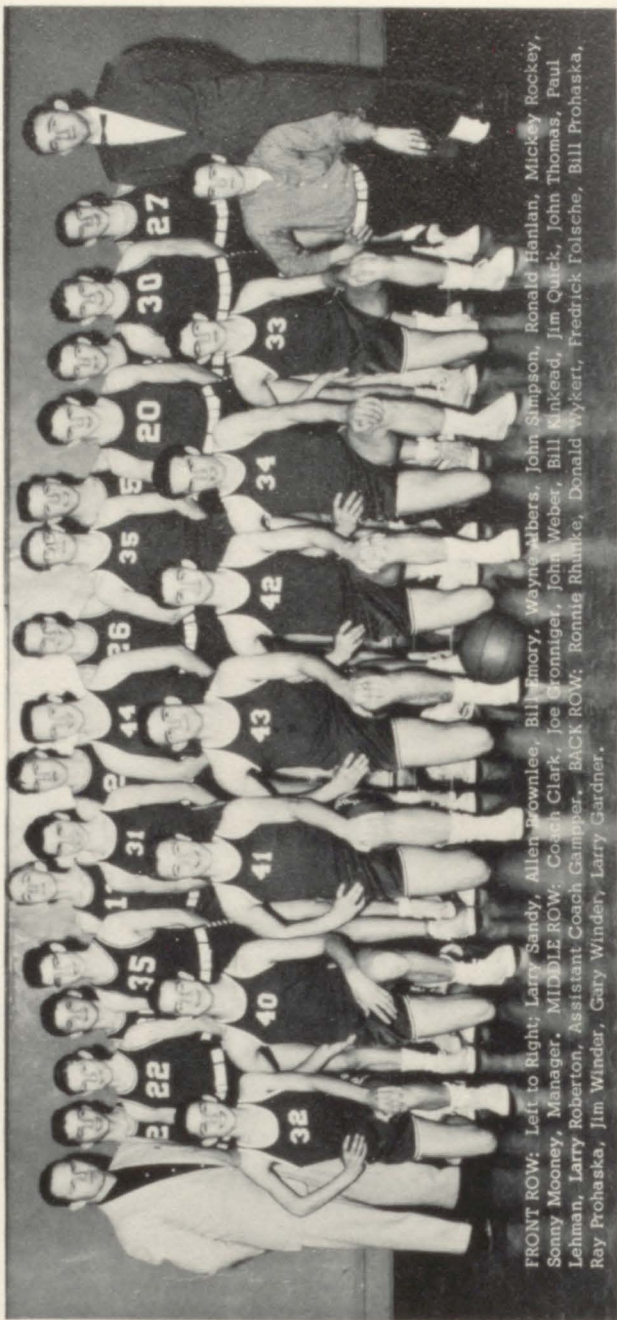


LARRY SANDY
JIM QUICK

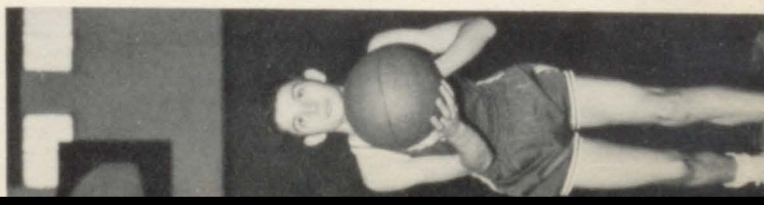


BILL OYERLY
WAYNE ALBERS





FRONT ROW: Left to Right: Larry Sandy, Allen Brownlee, Bill Emory, Wayne Albers, John Simpson, Ronald Hanlan, Mickey Rockey, Sonny Mooney, Manager. MIDDLE ROW: Coach Clark, Joe Gronniget, John Weber, Bill Minkend, Jim Quick, John Thomas, Paul Lehman, Larry Robertson, Assistant Coach Gampfer. BACK ROW: Ronnie Rhunke, Donald Wykert, Fredrick Folsche, Bill Prohaska, Ray Prohaska, Jim Winder, Gary Winder, Larry Gardner.





FIELD EVENTS

John Thomas, Ronnie Rhunke, Gary Winder, Wayne Albers, Bill Prohaska, Jim Winder, Ray Prohaska, Allen Brownlee, John Merriot, Larry Gardner, Mickev Rockey.



DISTANCE MEN

Larry Robertson, Joe Gronniger, Leonard Sharp
Larry Abbet, Jim Quick



MILE RELAY

LARRY GARDNER



RONNIE HANLAN - TRACK CAPTAIN

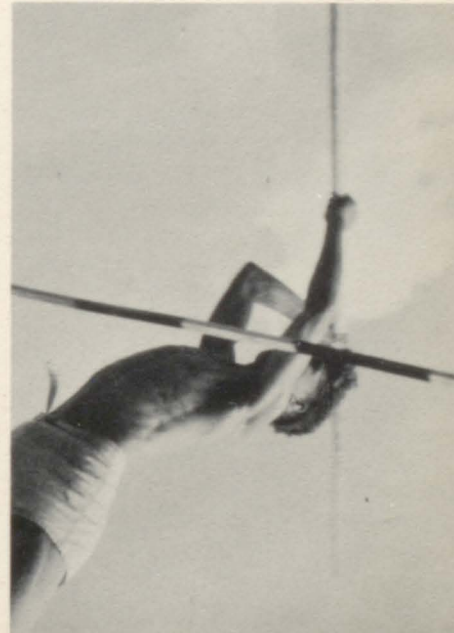
MANAGERS

Max Ginter - Larry Sandy



MEDLEY RELAY

JOHN MERRIOT



Football

"A" TEAM SCHEDULE

Highland There
 Wathena There
 Sabetha There
 Robinson Here
 Horton There
 Seneca Here
 Hiawatha There

"B" TEAM SCHEDULE

Wathena
 Horton
 Fairview
 Wathena
 Hiawatha
 Hiawatha "Fresh."

This year only three lettermen returned to the squad. They were: Wayne Albers, Ronald Hanlan, and Fred Lewis.

We had a large squad this year consisting mostly of underclassmen. The names and positions were as follows:

Paul Lehman R.E., Bill Prohaska R.T., Jim Winder R.G., Bill Oyerly C., John Simpson L.G., Wayne Albers L.T., Jim Quick L.E., Ronnie Hanlan Q.B., Fred Lewis R.H., Larry Robertson L.H., Larry Nocks F.B., Max Ginter R.E., Gary Winder R.T., Ronnie Rhunke R.G., Carl Whitten C., Lawrence Sharp L.G., Ray Prohaska L.T., Bill Kinkead L.E., Larry Sandy Q.B., Larry Abbett R.H., Donald King L.H., Larry Gardner F.B., Fred Clary R.E., Henry Keller R.G., Jerry Murphy R.G., Joe Gronniger R.G., Richard Norris L.T., Bernard Koehler L.E., Sonny Mooney L.H., Bill Foster R.H., Mickey Rockey L.H., Bill Davis R.G., John Merriot R.G.

Basketball

GAME SCHEDULE

Elwood Here
 Highland There
 Sabetha Here
 A.C.C.H.S. There
 Horton Here
 Bendena Here
 Hiawatha There
 Highland Here
 Wathena Here
 Sabetha There
 Elwood There
 A.C.C.H.S. Here
 Horton There
 Hiawatha Here
 Wathena There

TOURNAMENT SCHEDULE

County Tournament

Troy 58 Elwood 47
 Troy 34 Wathena 59
 Troy 29 D.C.C.H.S. 47
 4th Place

District Tournament

Troy 42 Robinson 37
 Troy 44 Horton 61
 Troy 45 Elwood 42
 3rd Place

We started the season with only one letterman, but by the end of the season we had seven more.

Members of the squad were:

Wayne Albers, John Simpson, Jim Quick, John Weber, Larry Sandy, Allen Brownlee, Bill Emory, Ronnie Hanlan, Mickey Rockey, Larry Robertson, Paul Lehman, John Thomas, Bill Kinkead, Joe Gronniger, Ronnie Rhunke, Donald Wykert, Fred Folsche, Bill Prohaska, Ray Prohaska, Jim Winder, Gary Winder, and Larry Gardner.

Track

TRACK MEETS

Triangular Meet--Troy, Horton, Sabetha
 Triangular Meet--Troy, Elwood, Highland
 Dual Meet--Troy, Fairview
 K-36 League Meet
 Atchison Relays
 Big-Six League Meet
 Big-Six Jr. High League Meet
 Doniphan Co. Track Meet
 Regional Track Meet at Baldwin
 State Track Meet at Wichita

RECORDS BROKEN

Old Records	New Records
L.H.--22:0, Martin	21:0, Hanlan
H.H.--16:6, Howland	15:7, Hanlan

This year we had a very large track squad consisting mostly of boys who were out for spring football training. The season got under-way with a late start due to the rainy weather. Nevertheless, the following boys qualified to enter the regional track and field meet at Baldwin, Kansas: P. Lehman, R. Hanlan, J. Thomas, L. Sharp, L. Abbett, W. Albers, J. Winder, J. Gronniger, Hanlan qualified to go to the state meet.



COACH
DONALD CLARK

ASSISTANT COACH
FRED K. GAMPPER

"Football Queen"
Susie McKernan



PRINCESS
Jean Knapp



PRINCESS
Marilyn Mooney



Homecoming "1956"



Humor





SECOND



FIRST PLACE



THIRD

Snapshot

Winners



