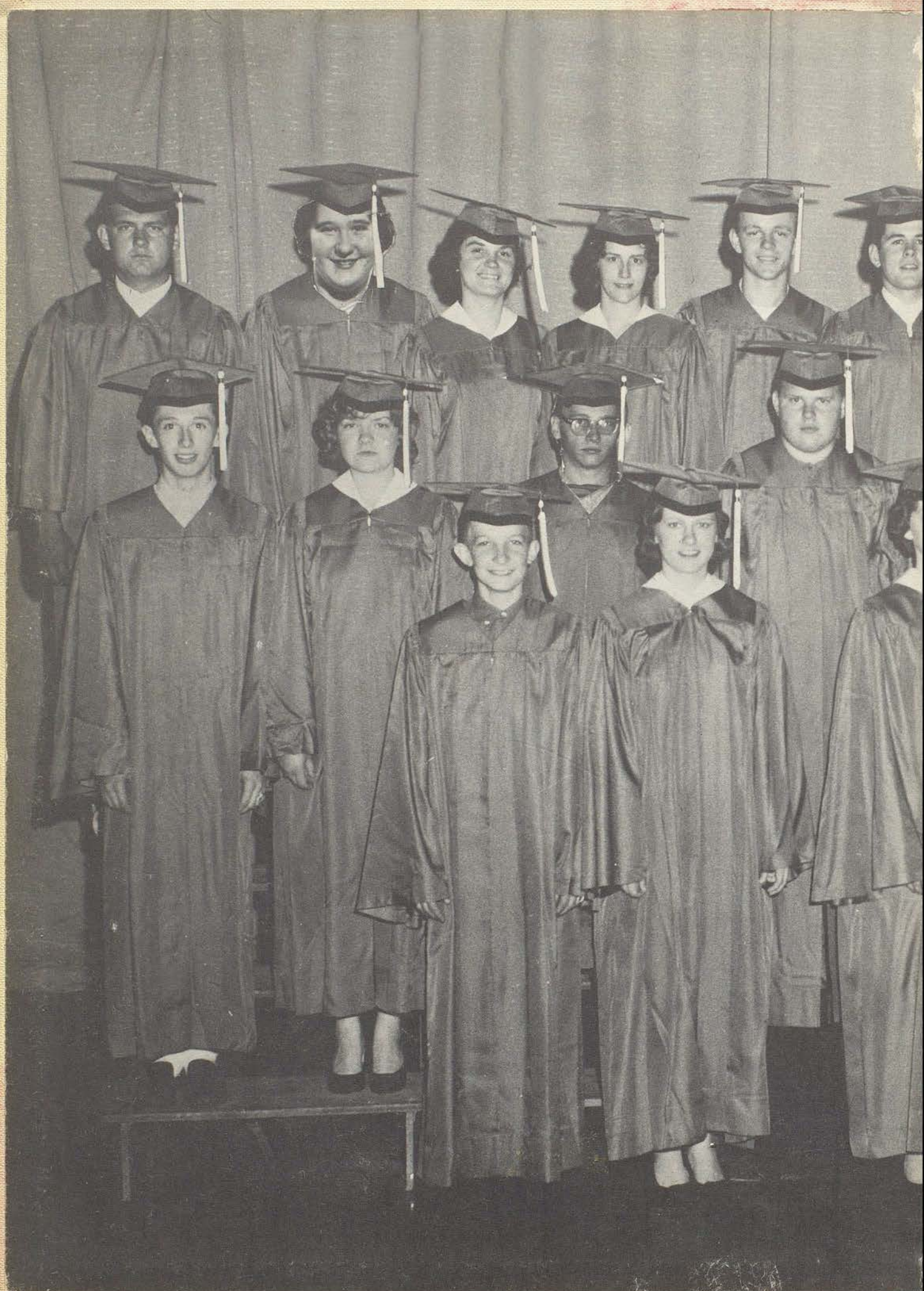
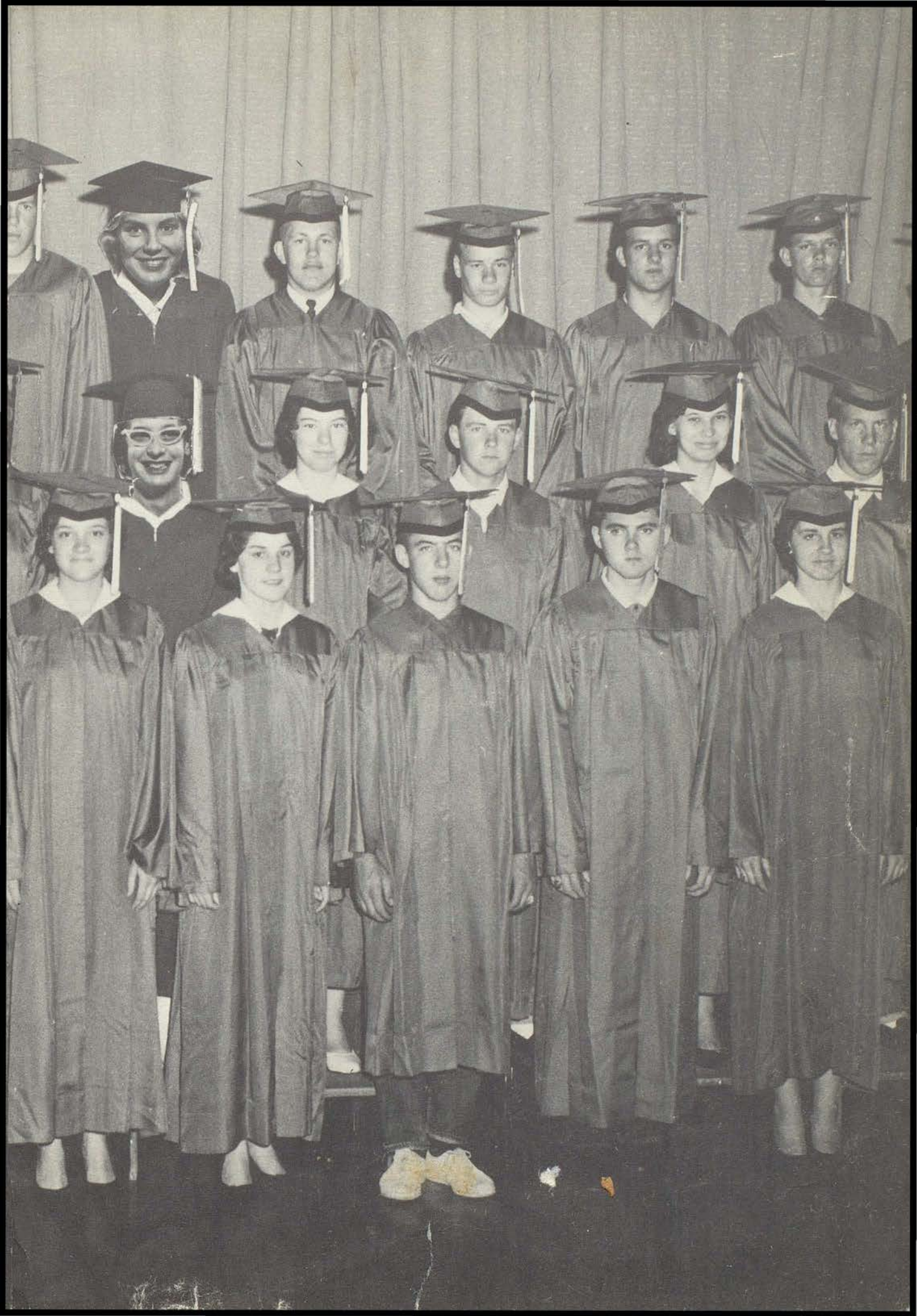
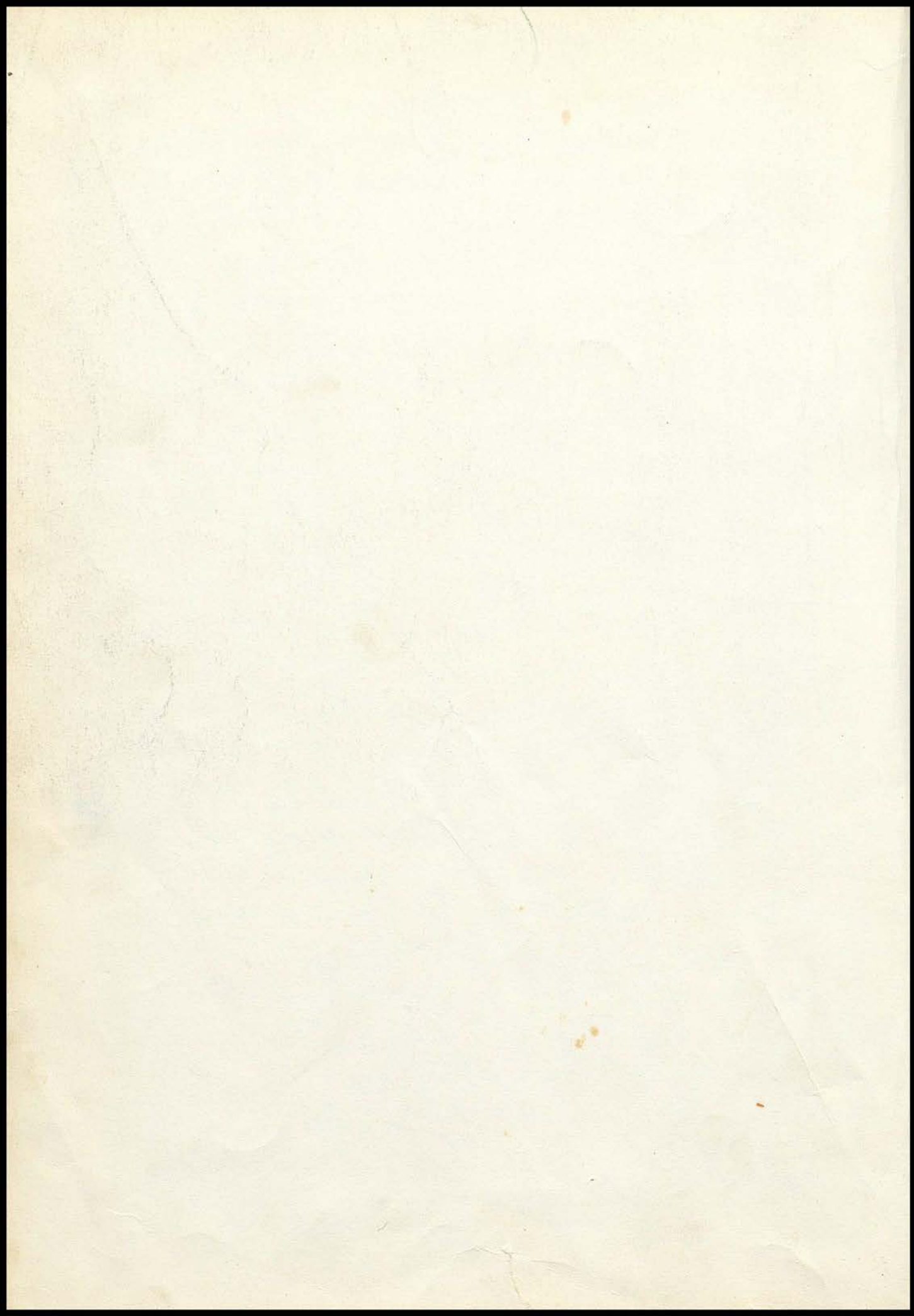


1964 WILDCAT





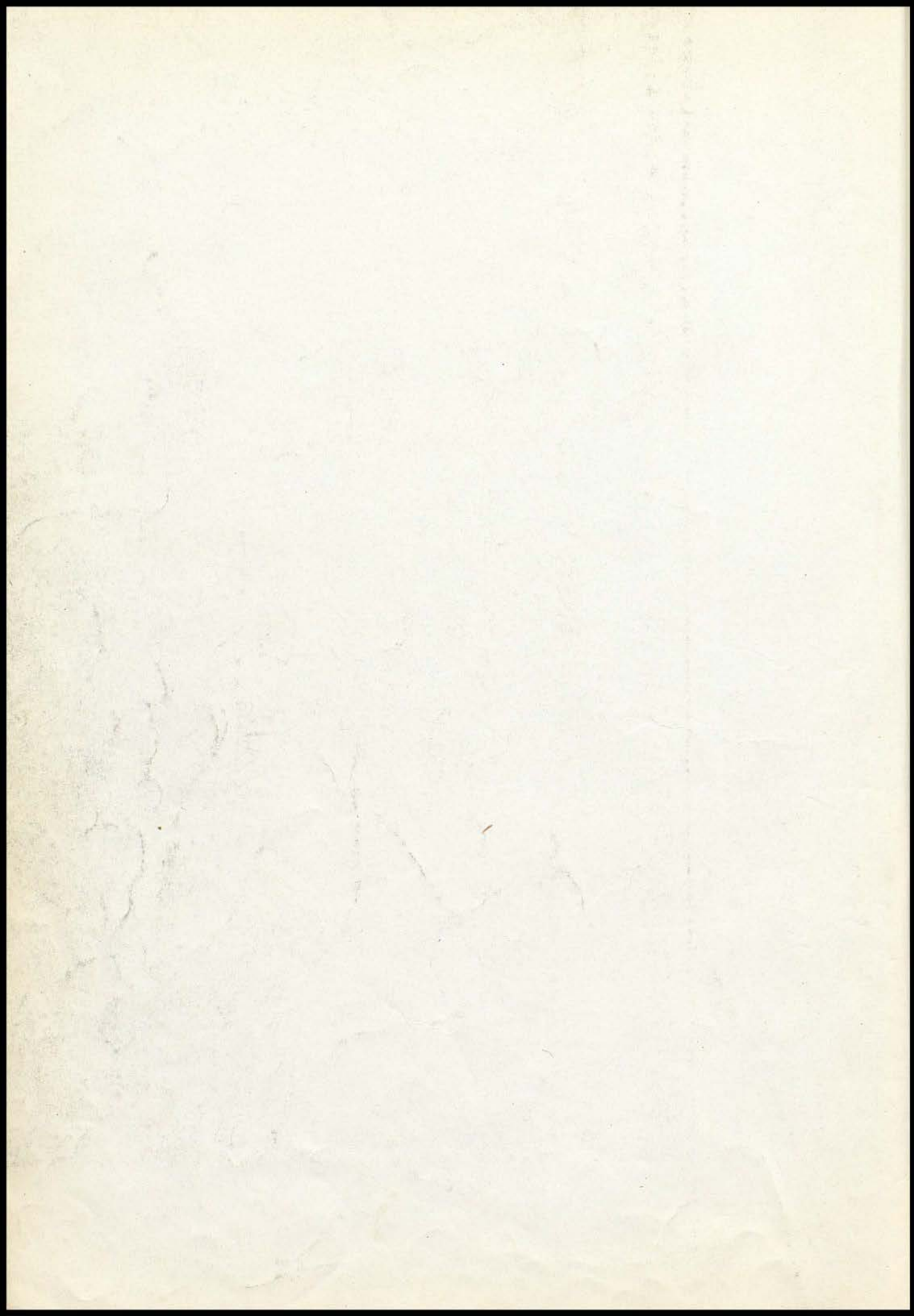




The Wildcat 1964

Wathena Rural High School
Wathena, Kansas

Compliments of The Wathena Times





Ode to President Kennedy

By Tom Didlo


The morning dawn was like a spring day,
Filled with happiness, cheer and good will,
For this man was filled with unbound spirit,
As bright as the noon day sun,
And with energy unlimited and not yet set free,
To be used for the cause of freedom and
truth.

But now the evening is like a winter day,
Dark and dreary with unweighted grief,
For this man as he majestically sat
Before the cheering thousands
Was struck down by a leaden sphere,
Sent on its way by an unseen hand.





Dedication



We, the Seniors of 1964, hereby dedicate this yearbook to our beloved sponsors, Miss Karen Ann Ritter and Mr. Lyle Modellmog, who have devoted themselves willingly to our class and offered suggestions that have spurred us on to work and to accept the responsibilities of life. Miss Ritter has been an inspiration to the musical department and Mr. Modellmog's capabilities as coach have accomplished remarkable improvements.

To show the deep appreciation and gratitude which we of the Senior class have for you, Miss Ritter and Mr. Modellmog, we do dedicate to you this 1964 Wildcat.



Administration



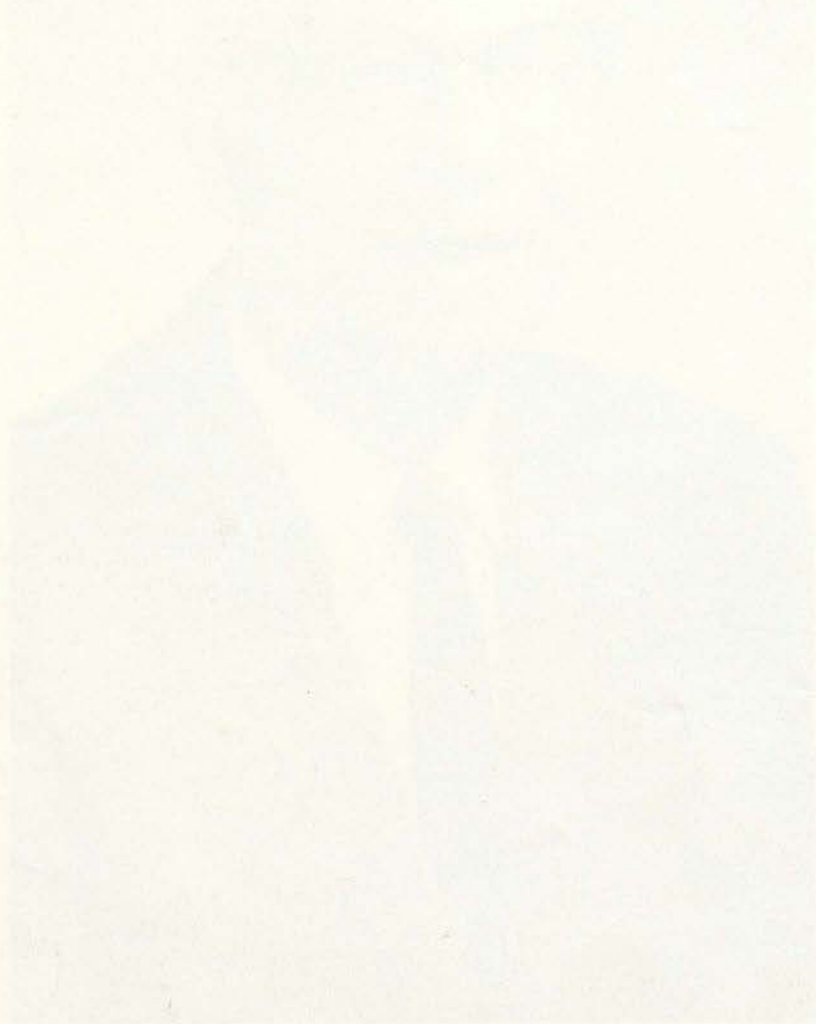


Principal's Message

Many students go through the doors of our school every year. Almost all of these have some differences in their appearance, their ambitions, their abilities, and their tolerance of others beliefs and station in life.

The school promotes sociability and stimulates the intellectual and moral life of the students and community. A broad cooperation between different classes of society and the spirit of tolerance between different groups are the main objectives of our school. Young people must learn to be tolerant in their attitude towards others in their religious beliefs, their political allegiance, their racial problems, and the economic status of each.

May all of you receive something from this school to better prepare you to take your proper station in society.



Faint, illegible title text, possibly a name or heading.

Faint, illegible text, possibly a paragraph or list of items, located at the bottom of the page.



DONALD MANVILLE-Treasurer



JOHN BLACKBURN-Clerk



RICHARD SCHULTZ-Director

Administration of the affairs of a high school involve many difficult problems in management and personnel. Bonds voted for major additions to the high school building this year indicate the community's interest in expansion of school facilities to meet the needs of a larger school enrollment.



SEXTET: This group requires advanced voices for more difficult singing. The girls appear at various community functions and have been singing together since the seventh grade. Back row: Janeth Shields, Karen Harman, Phyllis Bradshaw, Judy Hewins, Melinda Madinger and Linda Burdge. Miss Karen Ann Ritter at the piano.





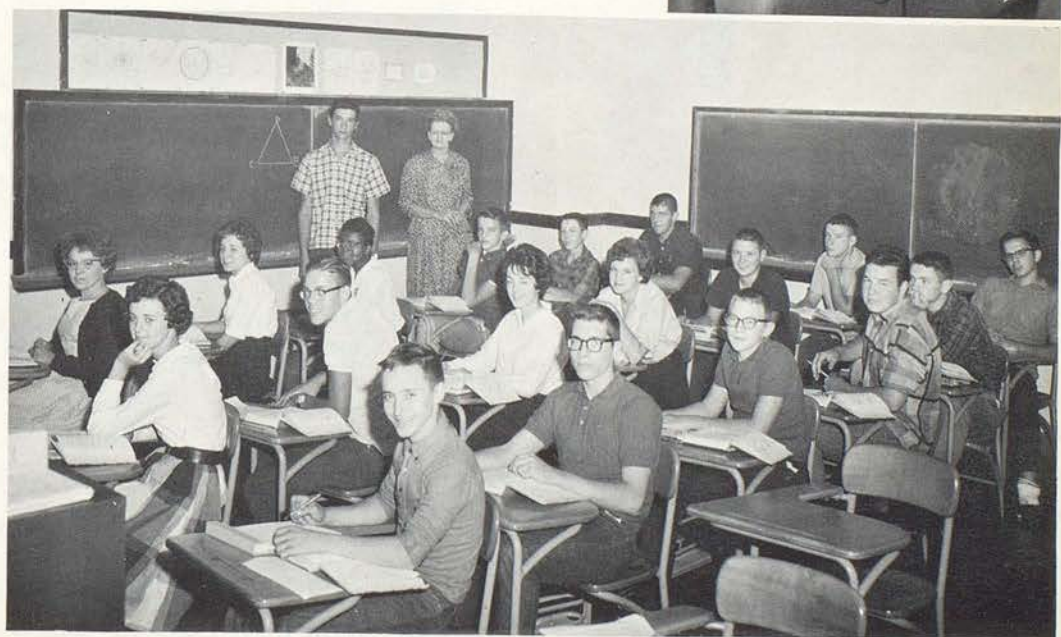
In Biology class, Mr. Moddelmog helps students learn about the life processes of a cross section of each phylum of animals and plants and the anatomy and physiology of man.



Lyle Moddelmog
 B. S. Degree, K.S.T.C.
 Biology
 Chemistry
 Football
 Track



Ella M. Corder
 B.S. Degree,
 Fort Hays K.S.C.
 Algebra I
 Geometry
 Business Arithmetic



Mrs. Corder says that geometry teaches us to think logically and scientifically, and is essential for reaching accurate conclusions in any vocation that one may wish to enter.

Compliments of Murphy's and Sunflower Village





Miss Terrell tells her class that advanced algebra is becoming a necessity for boys and girls to enter college, and a necessity for the best jobs in the armed forces and civil service.



Henrietta C. Terrell

A. B. Degree,
William Penn College,
Oskaloosa, Iowa
Algebra II
Trigonometry
Essential of Mathematics
General Science



Charles E. Cotner

B.S. Degree,
East Central State,
Ada, Oklahoma
Typing I
Bookkeeping
American History



Since typewriting efficiency depends on the development of proper operational techniques of the typewriter, Mr. Cotner observes these beginning typing students daily to see that instructions are properly carried out. After graduation, many of these students will work in offices where the typewriter will be the basic machine of their job responsibilities.







Dorothy Kneller
 B.S. Degree, K.S.C., Pittsburg
 Home Economics
 English I, II

Mary Ann Delzeit, Melanie Euler, Nelita Slaughter, Thresa Kiefer, and Mrs. Kneller study a bulletin board on "How to Sew" as it appears in the Home Economics room. Not only sewing, but also cooking and home-making are learned in these rooms.



Ellen M. Warren
 B. S. Degree, K.S.U.
 Latin I
 Spanish I, II
 Library



Aprendemos el español—we are learning Spanish—says this class as they learn how to speak, read and write Spanish. World horizons widen for students, as they learn not only the language, but also the culture and customs of Spanish-speaking people.





Under the direction of Mr. McCloud, beginning shop students are encouraged to develop their basic skills and creativity as a source of satisfaction in future years.



Gary O. Tucker
 B.S. Degree, Baker University
 Physical Education I, II
 Woodworking
 Carpentry



Jerry McCloud
 B. S. Degree, K.S.T.C.
 Shop I, II, III
 Driver Education
 Mechanical Drawing



C





Josephine Kiefer

M. S. Degree, K.S.T.C.
 B. S. Degree,
 Mt. St. Scholastica College
 Typing II
 Shorthand
 English I
 Guidance



To help every student obtain maximum benefit from present learning situations and to assist in preparing for the next step, whatever that may be, is the aim of the guidance program, directed by Miss Kiefer.



Mrs. Leah Thomas leads the girls physical education classes in a program of team sports, tumbling and rhythmic activities which help to keep them physically fit. Here the Girls' Physical Education I and II classes make a pyramid.

Leah Jean Thomas

B.S. Degree, K.S.C., Pittsburg
 English III, IV
 Physical Education



Compliments of Dr. Evan A. Peterson





CONCERT CHOIR: The best developed voices are utilized here to learn advanced fundamentals of music. The Concert Choir entertains frequently throughout the community. Back row: Janeth Shields, Glenda Wise, David Minsch, Linda Burdge, Lonnie Sollars, Judy Hewins, David Deeken, Karen Harman and Fred Allen. Seated: Jim Eisiminger, Bill Manville, Nancy Coursen and Larry Cook.



Karen Ann Ritter

B. M. E. Degree,
Mt. St. Scholastica College
Boys Chorus
Girls Chorus
Band







Seniors



Class Officers



Janice Prophter

Band 1, 2, 3
 Girls' Chorus 1, 2, 3, 4
 Mixed Chorus 1, 2, 3, 4
 Jr. Play (Student Dir.) 3
 Senior Play 4
 Class Vice-President 4
 American Legion Gov. Day 3
 Basketball Queen Attendant 1
 Pep Club 1, 2, 3, 4
 Yearbook Staff 4
 Majorette 4
 Girls' State Alternate 3
 Pep Club Vice-President 4



Lawrence (Bill) Deeken

Student Council 3, 4
 Junior Play 3
 Senior Play 4
 Class President 4
 Basketball 1, 2, 3, 4
 Basketball Escort 3
 Yearbook Staff (Bus. Mgr.) 4

Class of 1964



Janice Hart

Girls' Chorus 1, 2, 3, 4
 Mixed Chorus 1, 2, 3, 4
 Junior Play 3
 Senior Play 4
 One-Act Play 2
 Class Secretary 4
 Girls' State Alternate 3
 Yearbook Staff 4
 State Scholarship Contest:
 Hon. Mention, Algebra I 1
 Fifth, Spelling I
 Honorable Mention, Eng. I
 First, Shorthand 3
 Second, English 3
 Spelling Contest:
 First 1
 Second 2



Melvin Goin

Boys' Chorus 1, 2
 Mixed Chorus 1, 2
 Senior Play 4
 Class Treasurer 4
 State Scholarship Contest:
 Hon. Men., Geometry 2
 Football 1, 2, 3, 4
 Basketball 1, 2, 3, 4
 Track 1, 2, 3, 4
 Basketball Escort 3
 W-Club Vice-President 4
 W-Club Constitution 4
 Yearbook Staff 4



Milton (Jim) Eisiminger

Band 1, 2, 3, 4
 Boys' Chorus 1, 2, 3, 4
 Mixed Chorus 1, 2, 3, 4
 Dist. Music Festival 1, 3
 State Music Contest 1, 3
 Senior Play 4
 Student Council 1, 4
 Class President 1
 American Legion Gov. Day 3
 Football 1, 2, 3, 4
 Yearbook Staff 4
 W-Club President 4
 "Litterbug" Essay Contest 2
 Dance Band 4
 Band Vice-President 4







Robert Castle

Transfer from Elwood 2
Boys' Chorus 2, 3
Mixed Chorus 2, 3
Football 2, 3
Track 2, 3
Basketball 2, 4
American Legion Gov. Day 3
Class Treasurer 2



William (Bill) Manville

Band 1, 2, 3, 4
Dance Band 2, 3, 4
Boys' Chorus 1
Pianist for Chorus 4
Dist. Music Festival 1, 2, 3, 4
Junior Play 3
Senior Play 4
One-Act Play (Student Dir.) 3
State Music Contest 4
Student Council 1, 3
American Legion Gov. Day 3
Boys' State Delegate 3
Basketball 1
Co-Editor of Yearbook 4



Pamela Christensen

Junior Play 3
Senior Play 4
One-Act Play 3
Girls' State Delegate 3
Pep Club 1, 2, 3, 4
Girls' Chorus 1, 2, 3, 4
Majorette 1, 2, 3
Drum Majorette 4
Poetry Award 3
Yearbook Staff 4
Girls' Chorus 1, 2, 3, 4
Mixed Chorus 1, 2, 3, 4



Larry Shalz

Band 1
Boys' Chorus 1
Junior Play 3
Class Vice-President 1
Football 2
Track 2



Ann Hewins

American Legion Gov. Day 3
Pep Club 1, 2, 4
Pep Club Secretary 4
Yearbook Staff 4
Junior Play 3
Senior Play 4

Ailene (Minsch) Gibson

Pep Club 1, 2, 3
Cheerleader 1, 2, 3
Chorus 1
Band 1, 2, 3, 4
Football Queen Attendant 1, 2
Mixed Chorus 1
American Legion
Government Day 3
Music Contest 3







Mildred Prophter
 Girls' Chorus 1, 2, 3, 4
 Mixed Chorus 1, 2, 3, 4
 Concert Choir 2
 American Legion Gov. Day 3
 Pep Club 1



Kay Davis
 Transfer from Highland 4
 Girls' Chorus 4



Fred Allen
 Boy's & Mixed Chorus 1, 2, 4
 Band 1, 2, 3, 4
 Concert Choir 1, 2, 4
 Dist. Music Festival 1, 2, 3, 4
 State Festival 1, 2, 3
 Junior Play 3
 One-Act Play 3
 Senior Play 4
 Yearbook Manager 4
 Dance Band 2, 3, 4



Charlotte Fulcher
 Girls' Chorus 1, 2
 Mixed Chorus 1, 2



Jim Rolfe
 Band 1, 2
 Brass Octet & Choir 2
 District Music Festival 2
 Football 1, 2, 4
 Basketball 1, 2, 3

Tom Didlo
 State Scholarship Contest:
 5th Business Math

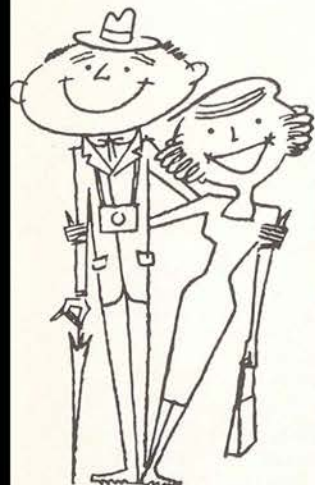






Joanne Gilpin

Band 1, 2, 3, 4
Class Treasurer 1
Class Secretary 1, 2, 3
American Legion Gov. Day 2
Pep Club 1, 2, 3, 4
Basketball Queen Att. 2
Football Queen Att. 2



Linda Molloy

American Legion Gov. Day 3
Pep Club 1, 2, 4
Majorette 3, 4
Yearbook Staff 4
Poetry Award 3
Senior Play 4



Mike Studer
Junior Play 3

Romona Silvy

Junior Play 3
Sr. Play (Student Director) 4
Student Council 2
Class President 2
American Legion Gov. Day 3
Girl's State Delegate 3
Football Queen Att. 3
Basketball Queen Att. 3
Christmas Queen Candidate 1
Cheerleader 4
Pep Club 4
Pep Club President 4
Co-Editor Yearbook 4



Ronald Miller

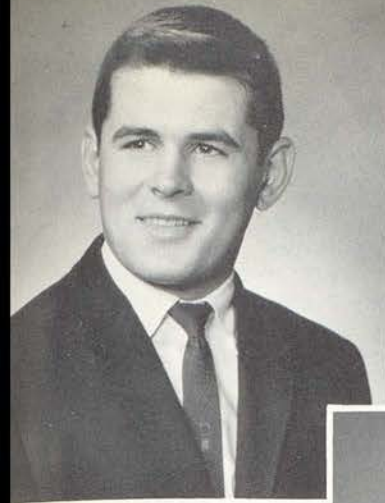
Football 1, 2, 3, 4
Basketball 1, 2, 3, 4
Track 1, 2, 3, 4
Football Escort 3
Basketball Escort 3
Class Reporter 3
American Legion Gov. Day 3



Wallace Newton

Boys' Chorus 1
Concert Choir 1
Class Vice-President 2
American Legion Gov. Day 3
Football 1
Basketball 1
Track 1
Senior Play 4





Daniel Benitz

Band 1, 2, 3
Boys' Chorus 1, 2, 3
Mixed Chorus 1, 2, 3
District Music Festival 1, 2, 3
State Music Contest 1
Student Council Treasurer 4
Class Treasurer 3
American Legion Gov. Day 3
Football 1, 2, 3, 4
Basketball 1, 2
Track 1, 2, 3, 4
Football Escort 3



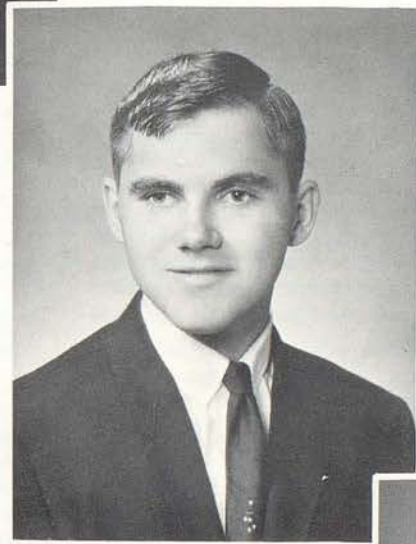
Kenneth Schmille

Football 1, 2, 3, 4
Basketball 2, 3, 4
Track 2, 3, 4
Football Escort 3



Kathy Ulsh

Band 1, 2, 3, 4
Band President 4
Band Secretary 3
Girls Chorus 1, 2, 3, 4
Girls Chorus President 3
Concert Choir 2
Junior Play 3
Senior Play (Prompter) 4
Class Vice President 3
Christmas Queen Attendant 3
Pep Club 1, 2, 3, 4
Majorette 4
Yearbook Staff 4



Larry Cook

Band 1, 2, 3, 4
Dixieland Band 2
Dance Band 2, 3, 4
Boys' Chorus 1, 2, 3, 4
Mixed Chorus 1, 2, 3, 4
Concert Choir 2, 4
Dist. Music Festival 1, 2, 3, 4
State Music Contest 1
Student Council 2, 3, 4
Class President 3
Boys' State Delegate 3
Yearbook Staff 4



Anna Orcutt

Girls' Chorus 1, 2
Pep Club 1, 2



Judy Webber

Junior Play 3
Senior Play 4
American Legion Gov. Day 3
Yearbook Staff 4



Class History

Thirty-two green freshmen turned up for training in the fall of 1960. These trainees were Fred Allen, Danny Benitz, Harold Brenner, Larry Cook, Pam Christensen, Bill Deeken, Tom Didlo, Jim Eisiminger, Charlotte Fulcher, Joanne Gilpin, Melvin Goin, Janice Hart, Ann Hewins, Bill Manville, Robert Meeks, Ronald Miller, Ailene Minsch, Linda Molloy, Wally Newton, Anna Orcutt, Jan Prophter, Mildred Prophter, Jim Rolfe, Kenneth Schmille, Larry Shalz, Romona Silvy, Jim Slaughter, Vern Springstead, Mike Studer, Kathy Ulsh, Judy Wallace and Judy Webber. Jim Eisiminger was chosen to head the group and Larry Shalz to assist him. Joanne Gilpin kept track of our records, and Wally Newton reported our news to the world. Bill Manville represented us at headquarters. Patricia Patterson and Robert McKenzie advised the group. We officially entered training after our initiation.

During our first blast-off many of us gained honors. Ailene Minsch was football queen attendant; Jan Prophter was basketball queen attendant; and Danny Benitz and Romona Silvy were the Christmas king and queen candidates. Ailene Minsch served as cheerleader. Janice Hart won honors in the State Scholarship Contest in spelling, algebra and English. Jim Eisiminger and Danny Benitz earned football letters and Ronald Miller and Bill Deeken earned basketball letters. Fred Allen received a two rating at the District Music Festival.

For entertainment we had a sock hop and saw "Gone with the Wind."

Our promising group made its second take-off with a crew of thirty-five. New crew members were Larry Boeh, Bob Castle and Carol Mason Sterne. Vern Springstead cancelled his reservation at the first stop. Leader for this lap of our journey was Romona Silvy and assistant leader was Wally Newton. Joanne Gilpin kept the records and Bob Castle controlled our treasure of fuel. Larry Cook represented us at headquarters. Garrie Crider and Lyle Modellmog were our advisors.

To make money we worked in the concession stands; and to amuse ourselves we saw "Errand Boy" and "State Fair."

Many of our group won honors that year. Melvin Goin won honorable mention at the State Scholarship Contest in geometry. Ailene Minsch cheered for the school. Janice Hart had a part in the one-act play. Joanne Gilpin and Ailene Minsch were football queen attendants, and Joanne was also basketball queen attendant. Boys earning football letters were Danny Benitz, Jim Eisiminger, Melvin Goin, Ronnie Miller and Kenneth Schmille. Those earning basketball letters were Bill Deeken, Melvin Goin and Ronnie Miller. Danny Benitz, Bob Castle and Melvin Goin earned track letters. Fred Allen received a one rating at the district music festival and a two at the state and Bill Manville received a two rating at the district.

Our rocket blasted off for the third time with a flight crew of thirty-five. Carol Mason Sterne decided not to make the trip with us. Larry Cook was commander of our forces and Kathy Ulsh was second in command. Joanne Gilpin again kept our records while Danny Benitz guarded our funds. Ronnie Miller served as reporter and Bill Deeken represented us at headquarters.

For entertainment the rocketeers went to St. Joseph to see "What Ever Happened to Baby Jane?"

To make money we gave our first play "Keep Moving." The cast consisted of Judy Webber, Bill Deeken, Fred

Allen, Janice Hart, Bill Manville, Romona Silvy, Mike Studer, Kathy Ulsh, Ann Hewins, Pam Christensen and Larry Shalz.

Josephine Kiefer and Dorothy Kneller were our sponsors.

We gave a banquet honoring the seniors at Maples Tea Room. "Apple Blossom Time" was the theme of our banquet. In return we were guests of the seniors at a picnic at the city park.

Representatives to Girls' State were Romona Silvy and Pam Christensen, and those to Boys' State were Larry Cook and Bill Manville. Other honors that year were won by various members. Pam Christensen and Fred Allen were part of the cast of "A Page of Destiny" which won first place at the County Play Festival. Ronnie Miller and Kathy Ulsh were candidates for Christmas king and queen, and Romona Silvy was an attendant at the football homecoming and at the Cupid Festival. Janice Hart won first place in the State Scholarship Contest in shorthand and second in English. Danny Benitz, Bob Castle, Jim Eisiminger and Kenneth Schmille earned football letters. Ronnie Miller earned a basketball letter. Track letters were earned by Melvin Goin and Ronnie Miller. At the District Music Festival Bill Manville received a two rating, Fred Allen a one rating. Fred also earned a one rating at the State Music Festival.

Our group of thirty seasoned travelers blasted off on its fourth and final trip on August 26, 1963. Bill Deeken was chosen as head astronaut and Jan Prophter as alternate astronaut. Melvin Goin was chosen to guard our fuel supply and Janice Hart to record our knowledge. Jim Eisiminger was our representative to headquarters. Those not with us for this trip were Larry Boeh, Jim Slaughter, Harold Brenner, and Ailene Minsch Gibson although Ailene later rejoined us and Judy Wallace left after about six weeks. Kay Davis transferred to our group. Karen Ritter and Lyle Modellmog were our sponsors.

The cast for our second play "The Eager Miss Beaver" was composed of Pam Christensen, Bill Manville, Jim Eisiminger, Jan Prophter, Fred Allen, Ann Hewins, Judy Webber, Bill Deeken, Melvin Goin, Wally Newton and Janice Hart.

Honors won by members of this group were many during their last flight. Jim Eisiminger served as football captain and Melvin Goin as basketball captain. Boys lettering in football were Danny Benitz, Jim Eisiminger, Melvin Goin, Ronnie Miller and Kenneth Schmille. Melvin Goin and Ronnie Miller lettered in basketball. Romona Silvy was football queen and Jan Prophter was basketball queen. Pam Christensen was football and basketball queen attendant. Kenneth Schmille and Ann Hewins were crowned king and queen at the Christmas dance. Melvin Goin and Bill Manville participated in the one-act play. Romona Silvy was one of the cheerleaders for our final trip. She also served as president of the pep club. Jim Eisiminger was president of the Student Council and of the Letterman's Club.

Highlights of this year were the annual Christmas dance given by us on December 14, our food sale, and the banquet at which we were guests of the juniors.

Our rocket slowly approached its last stop as we held Baccalaureate Services on May 10, and Class Night on May 12. Then it stopped for the final time on May 14, when we held Commencement exercises. Now that we have finished four sponsored trips, each of us will be going into solo, separate orbits.



Who's Who



Careful,



"Have you heard the latest?"



Best Dressed!



"We like you, Romona"



Do you think I'll make it!



"Hi ya Honey!"



"Talent, Man, Talent"



"Our Handy Man"



"Let me think . . ."



?

"Do I have a temper?"







Juniors





Dennis Goin
Class Treasurer



John Chambers
Vice-President



David Deeken
Class President



Ruth Kirschbaum
Student Council



Nancy Hewins
Class Secretary



Joyce Gilpin



William (Nick) Embery



Daniel Dinning



James Elder



Keith Hacke



Wanda Caton



Stella Caton



Keith Bauman



Ronald Benitz



Bonita (Cheryl) Butcher



Billy Christopher



Linda Bruns

Class of 1965

Compliments of Farmers Grain & Lumber Company





Marilyn Hartman Janet Herr



Geralyn Johnson Dennis Juhl



Richard (Dick) Hewins



Lynn Kneller Jan Laipple



Patty Laipple Georgia K. Libel



Karol Madinger David Minsch



David Mattox Russell Moore



Harold Moss Lewis Myers



Jane Shalz







Ronald Schultz



Charles Studer



Patrick Wakeman



Donald Schultz



Frederick Walter



Judy Petitt



Joseph (Daniel) Studer



Dennis Shalz



Ronnie Hatfield



Linda Frankovich



Leroy Wilson



Marion Davis



Glenda Wise



Jolene Beckman



Elizabeth Sauer



Pamela Warren



Sandra Ramseier



Sandra Weber



Phillip Thomas



Frances Davis



Howard Crittendon



John Fulcher

Compliments of Lyons Oil Company, Inc., and Fleek's Fruit Mkt.





Sophomores





Linda Burdge
Class Vice President



Janeth Shields
Class Secretary



Homer Ritter
Class President



Karen Harman
Class Treasurer



George Eisiminger
Student Council



Glenda Abbett



Linda Bear



Phyllis Bradshaw



Sherye Bittiker

Class of 1966



Gerald Caton



Sharon Crittendon



James Drake



Charles Fulcher



Sharon Gingery



Rose Mary Hart



Lawrence (Mike) Gabriel

Compliments of Harman Funeral Home





Dennis Lester



Ruth McVey



Roberta Miller



Melinda Madinger



David Johnson



Betty Minsch



George Hartman



Carolyn Newton



James Miller



Milton Hartman



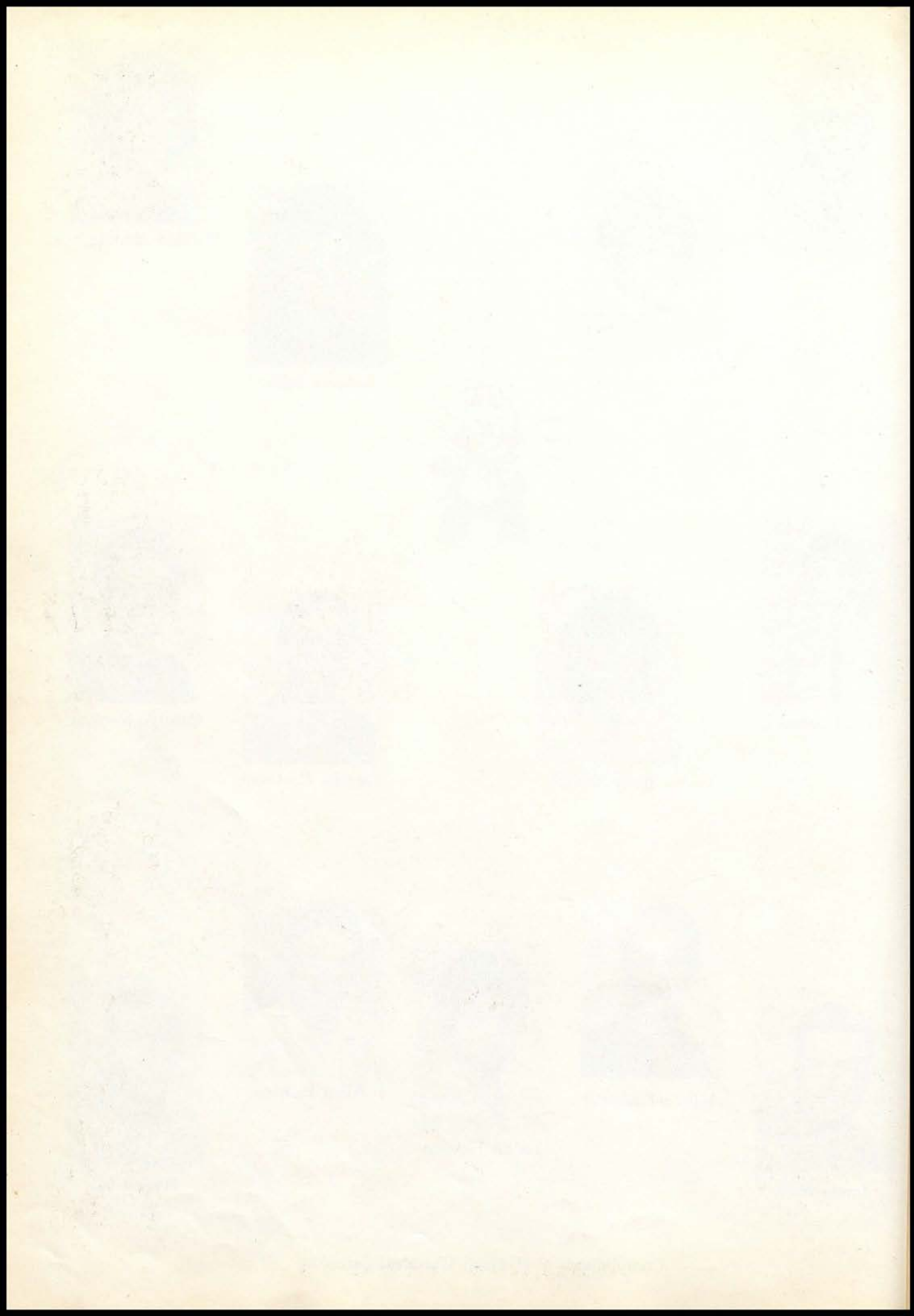
Judith Hewins



Allen Hewins



Mark Nold





Bill Kiehnhoff



Susan Rolfe



William (Bill) Nold



Steven Morey



Freddie Rohrer



Philip Studer



Michael Wakeman



Betty Walter



John Shalz



Geneva Wollnick



Kathleen Silvy



Lonnie Sollars



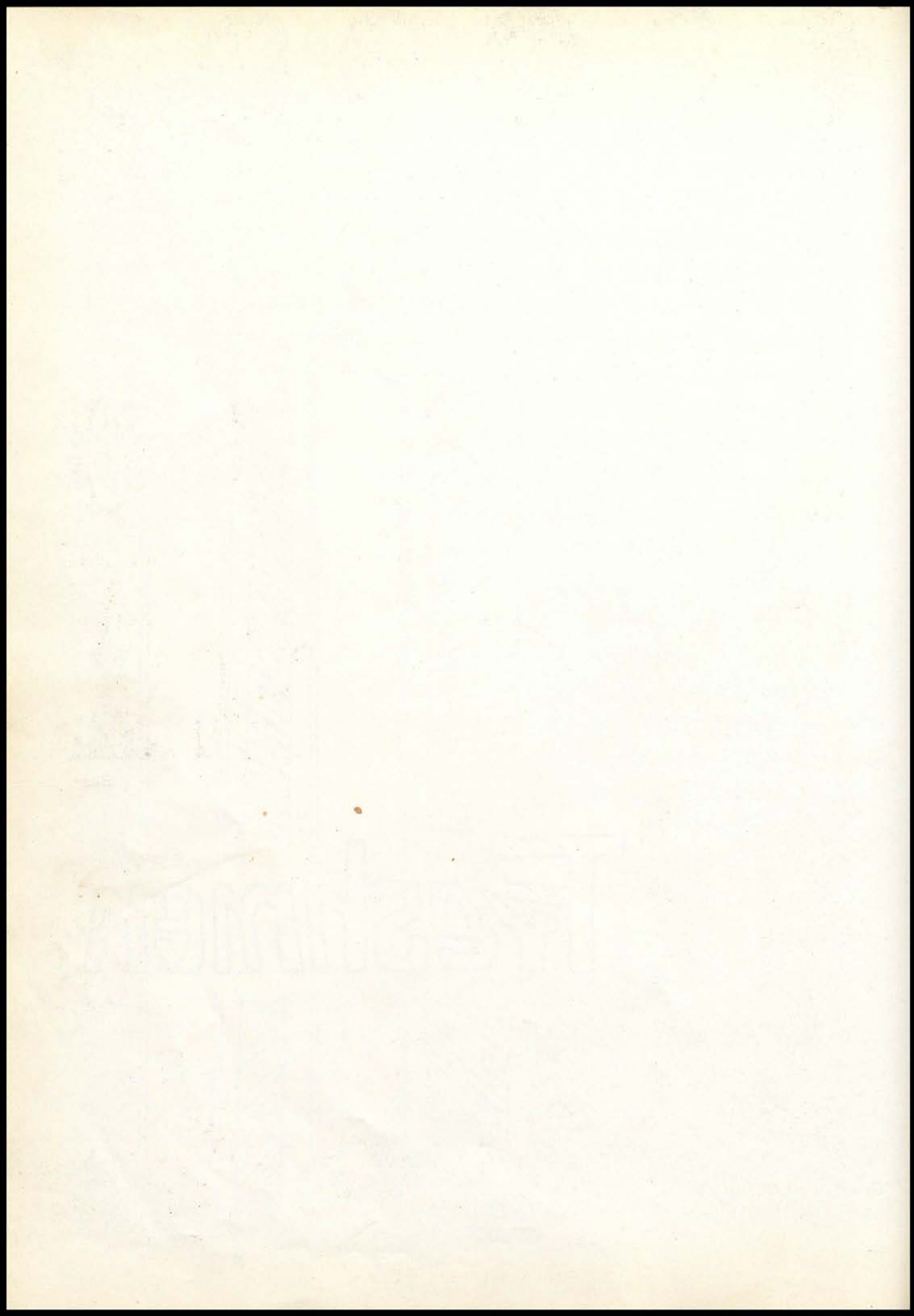
Robert Studer

Compliments of The Farmers State Bank





Freshmen





Melanie Euler
Vice-President



Bernard Walter
Student Council



Victoria (Vicky)
Fehrman
Treasurer



Duane Thomas
Class President



Julie Grable
Secretary



Stephen Boeh
Class Reporter

Class of 1967



Dawson Minsch



Vivian Kline



Leroy Hewins



Susan Weber



Nelita Slaughter



Ronald Bahr



Phyllis McVey



John Bear



Steven Gingery



Lila Schuman



Dennis Sharp



Nancy Coursen



Geneva Wilson



Blaine Thomas



Mary Ann Delzeit



Alan Boeh



Class of 1907





Richard Schultz Linda Hartman



Lee Brandt Janette Elder



Rex Dishon



Betty Lake



Thomas Miller



Thresa Kiefer



Warren Davis Lynda Fulcher



Ruth Wollnick



Bill Orcutt



Janice Ward



Carolyn Kline



Raymond Bell



James Caton



Kenneth Christopher Susan Hurtig



Francis Walker Brycen Rice





Athletics





**WATHENA PLACED SECOND
IN K-36 LEAGUE**

K-36 League Standings

	W	L	Place
Highland	5	0	1
Wathena	4	1	2
Troy	3	2	3
Elwood	1	4	4
Midway	1	4	4
St. Peter & Paul	1	4	4

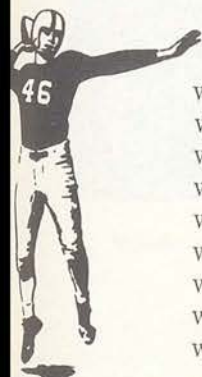


Compliments of Beck's Cafe

FOOTBALL SQUAD: Back row: Patrick Wakeman; Steven Gingery; Leroy Hewins; Dawson Minsch; Jim Walter; Tom Miller; Richard Schultz; Raymond Beli; Raymond Orcutt; Bill Nold. Third row: Coach Cotner; Homer Ritter; Duane Thomas; Blaine Thomas; Donald Schultz; David Minsch; Ronald Schultz; Frederick Walter; John Chambers; Dennis Lester; David Johnson; Coach Tucker; Coach Modellmog. Second row: Charles Studer; Nick Embery; Steve Boeh; Milton Hartman, Jr.; Bill Kiehnhoff; Dennis Juhl; Keith Bauman; George Eisiminger; Allen Hewins; Daniel Dinning; Lonnie Sollars. Front row: Phil Thomas; Richard Hewins; Jim Elder; Jim Eisiminger; Daniel Benitz; Ronald Miller; Kenneth Schille; Jim Rolfe; Ronald Benitz and Dennis Goin.

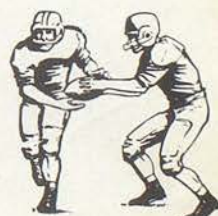
1963 FOOTBALL RECORD

Wathena 20	Valley Falls 18
Wathena 27	Everest 6
Wathena 46	Robinson 6
Wathena 25	Troy 13
Wathena 20	St. Peter and Paul 6
Wathena 18	Midway 7
Wathena 7	Hiawatha 13
Wathena 0	Highland 14
Wathena 27	Elwood 0



Jim Elder bulls his way for a first and ten!

Ronald Schultz collects six points with the aid of four blockers as Wathena scores against their homecoming opponent, Midway.







Jim Eisiminger captain,
Center Line Backer



Ronald Schultz fakes and goes for an easy gain.



Danny Benitz—Guard



Ronald Miller—End



Lyle Modellmog



Kenneth Schmille—Tackle

Donald Schultz is stopped by Everest linemen on a drive to their goal line.

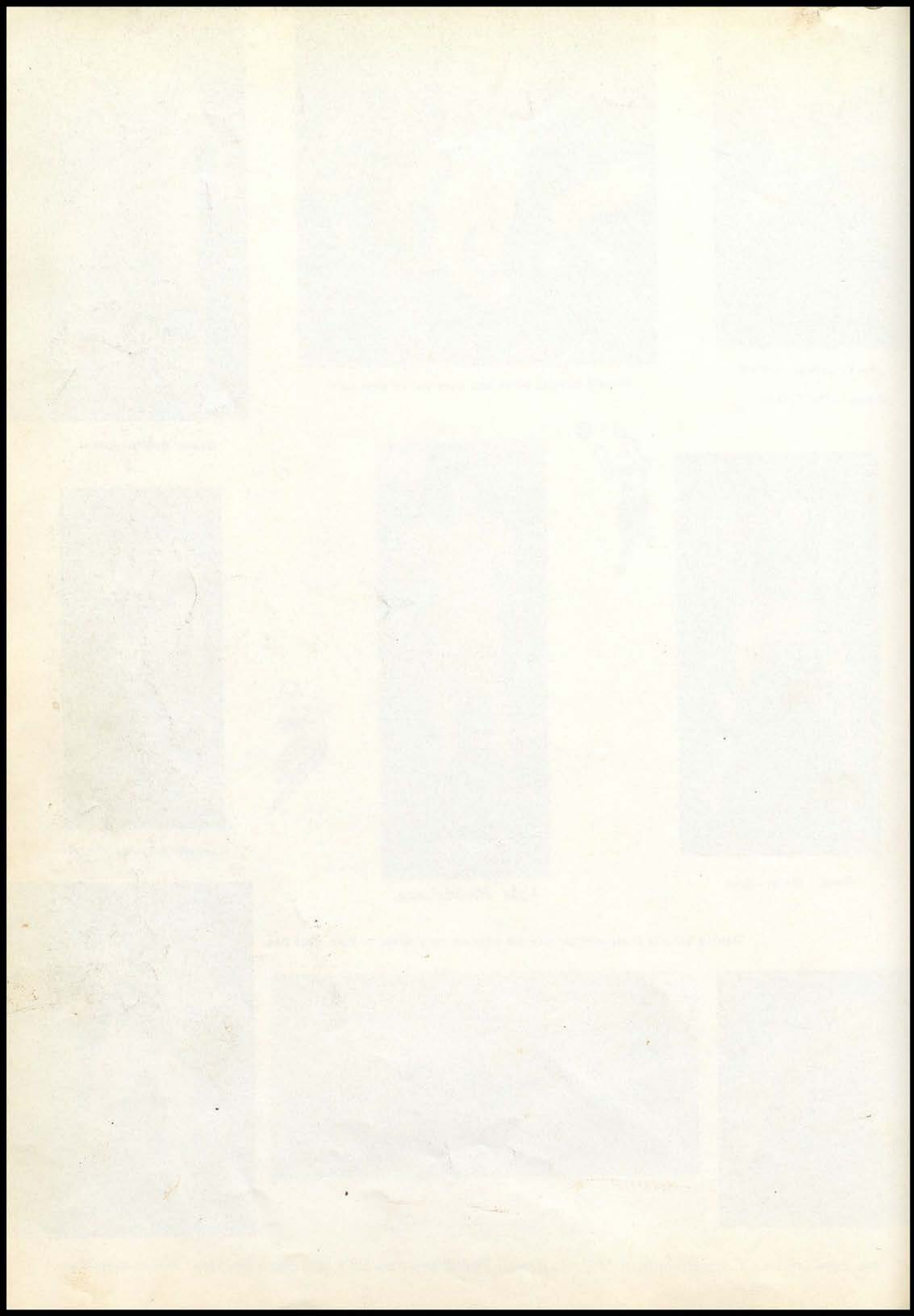


Jim Rolfe—Tackle



Melvin Goin—End

Compliments of Miller's Rexall Pharmacy and Ed's Standard Service





HOMECOMING QUEEN: Romona Silvy







The queen, her attendants, and the crowd are anxiously awaiting the outcome of the game with Midway.



Jim Eisiminger crowns the queen, Romona Silvy, at the thrilling home coming game with Midway, October 25. Romona was escorted by Kenneth Schmille. Although the score was 7-0 in favor of Midway at the half, the Wathena Wildcats surged ahead in the last half with three touchdowns, to win the game 18-7. Queen candidates and their escorts are Pamela Christensen, Melvin Goin; Nancy Hewins, Ronald Miller; Janeth Shields, Daniel Benitz; Melanie Euler, Jim Rolfe. Carrying the flowers and the crown are Gerri Hewins and Michael McKernan. Led by the majorettes in sharp new red and white uniforms, the Pep Club and the band form a star at the half of the Midway-Wathena game.







The Pep Club's white football against a blue background adds to the beauty of the queen and her attendants.



Romona, the queen, and Jim, the captain, lead the dance at homecoming.

Compliments of Wathena Apple Growers Association and Manville Garage





Allen Hewins
Forward



David Minsch
Forward



Homer Ritter
Forward



Ronald Miller
Center



Mark Nold
Center



Ronald Schultz
Guard



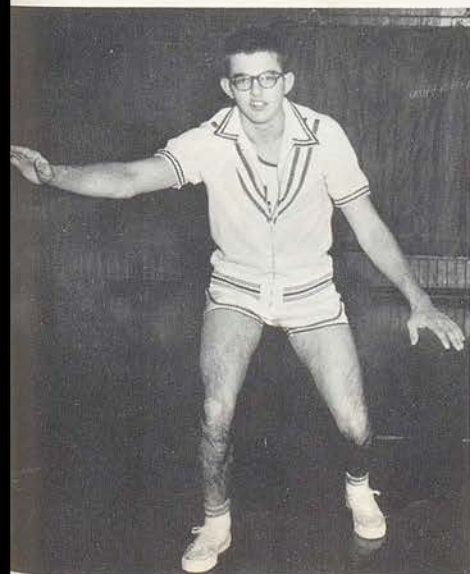
Donald Schultz
Guard



Jim Elder
Guard



John Chambers
Guard



Melvin Goin
Center
captain.

1963-64 A-Team Record

OPPONENT	POINTS	WATHENA
Elwood	46	59
Troy	76	52
Highland	79	41
Hamlin	19	77
Valley Falls	83	46
Midway	83	60
Troy	65	56
Highland	71	58
Elwood	52	78
Sts. Peter & Paul	74	60
Hamlin	61	63
Midway	72	51
Sts. Peter & Paul	84	55
Everest		

Gary O. Tucker
Coach







B TEAM: Coach, Lyle Moddemog; Bill Nold, Dennis Lester, Philip Thomas, Dennis Goin. Second Row: Nick Embery, Steve Boeh, Blaine Thomas, David Johnson. Front Row: Duane Thomas, Fred Walter, George Eisiminger and Danny Dinning.

Wathena B-Team won 1st Place in K-36 League Tournament at Highland.

1963-64 B-Team Record

OPPONENT	WATHENA
Elwood	58
Troy	44
Highland	34
Hamlin	70
Valley Falls	46
Midway	60
Troy	37
Highland	45
Elwood	72
Sts. Peter & Paul	74
Hamlin	78
Midway	76
Sts. Peter & Paul	53



FRESHMAN BASKETBALL TEAM: Back Row, Alan Boeh, Raymond Bell, Brycen Rice, Bill Orcutt, Mr. Charles Cotner. Second Row: Dickie Schultz, Kenneth Christopher, Ronald Bahr, Leroy Hewins, Dawson Minsch. First Row: Steve Boeh, Jim Walter, Steven Gingery, Tom Miller, Blaine Thomas.








Mélanie Euler, Linda Burdge, Pam Christensen and Nancy Hewins were the attendants to the basketball queen. Seated is Jan Propheter, our basketball queen.



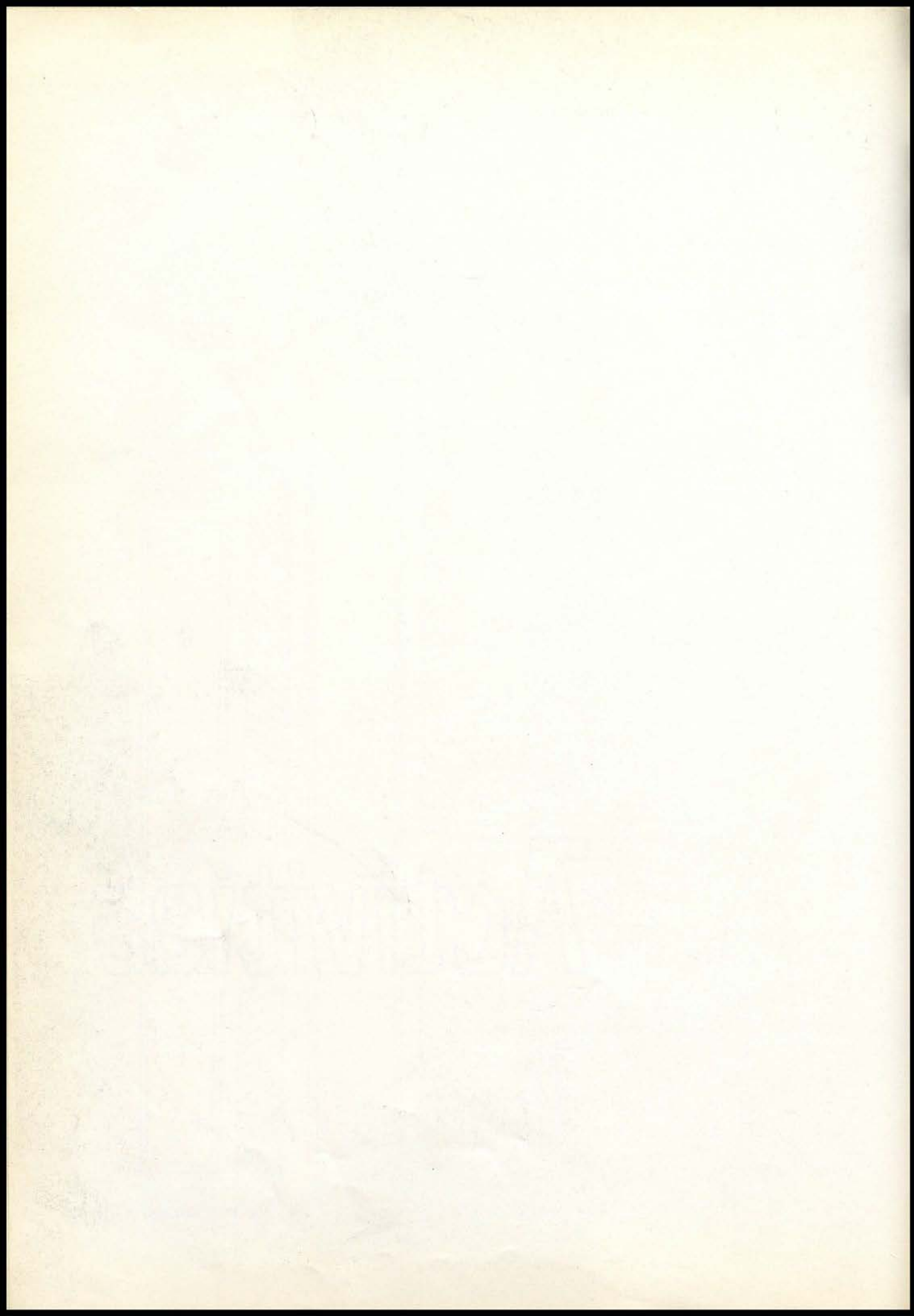
Janice Propheter, sitting in front of the rainbow, reigns as queen of the homecoming "Over the Rainbow" Basketball dance, held January 17, after the Elwood game. Melvin Goin is her escort and captain. Other candidates and their escorts are Pamela Christensen, with Donald Schultz; Nancy Hewins, with Ronald Schultz; Linda Burdge, with Ronald Miller; and Melanie Euler, with Jim Elder. Michael Shalz carries the crown and Sheri Schultz is the flower girl.







Activities





Dorothy Kneller
advisor

THE WILDCAT KITTENS

The Pep Club is typical of the fine spirit which dominates the school. With their enthusiastic shouts and fierce loyalty during a game, they help to make the team go, fight and WIN!

Back row: Lila Schuman; Jane Shalz; Pamela Christensen; Ann Hewins, secretary; Pamela Warren; Karol Madinger; Judy Petit; Ruth Kirschbaum; Joyce Wilson; Thresa Kiefer; Nelita Slaughter; Phyllis McVey; Linda Hartman. Fourth row: Patty Laipple; Linda Bear; Vivian Kline; Joanne Gilpin; Sharon Gingery; Georgia Libel; Judy Hewins; Cheryl Butcher; Justina Ritter; Gerilyn Johnson; Susan Weber; Mary Ann Delzeit; Julie Grable. Third row: Naomi Clinton; Ruth Wollnick; Geneva Wollnick; Janice Prophter, vice-president; Stella Caton; Wanda Caton; Janet Herr; Barbara Newton; Nancy Coursen; Sandra Weber; Elizabeth Sauer; Susan Rolfe; Marilyn Hartman; Charlotte Fulcher. Second row: Francis Walker; Janette Elder; Glenda Abbett; Kathleen Ullsh, treasurer; Kathleen Silvy; Betty Walter; Susan Hurtig; Carolyn Newton; Sherye Bitfiker; Linda Bruns; Melinda Madinger; Phyllis Bradshaw; Ruth McVey; Betty Minsch. Front row: Victoria Fehrman; Melanie Euler; Romona Silvy, president; Nancy Hewins, student council; Linda Burdge; Karen Harman; Joyce Gilpin and Janeth Shields.



CHEERLEADERS . . . The exuberant cheerleaders are an inspiration to the school. The enthusiasm of the Pep Club, the team, and the whole student body is greatly aroused by them.

BACK ROW, A-Team: Karen Harman, Joyce Gilpin, Janeth Shields. **SECOND ROW, B-Team:** Melanie Euler, Victoria Fehrman, Romona Silvy, Nancy Hewins. **FRONT ROW,** Linda Burdge, head cheerleader.

Compliments of Hoover Orchards and Wild Bill's Furniture & Appliance





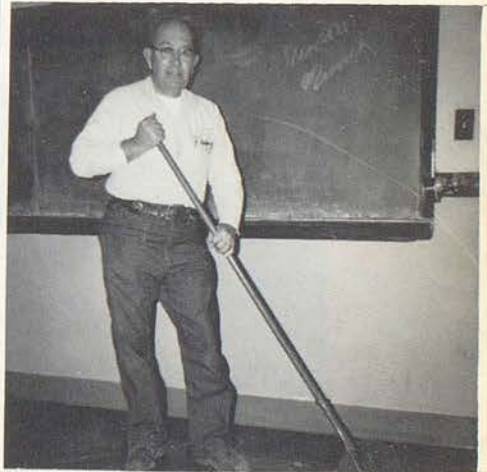
Preparations for Homecoming



"We're Gr-r-reat!"



Duane Thomas Jim Eisiminger



Lawrence Gabriel
Custodian

Boosters

Holiday Motel

Ed Gilpin, Wathena City Marshall

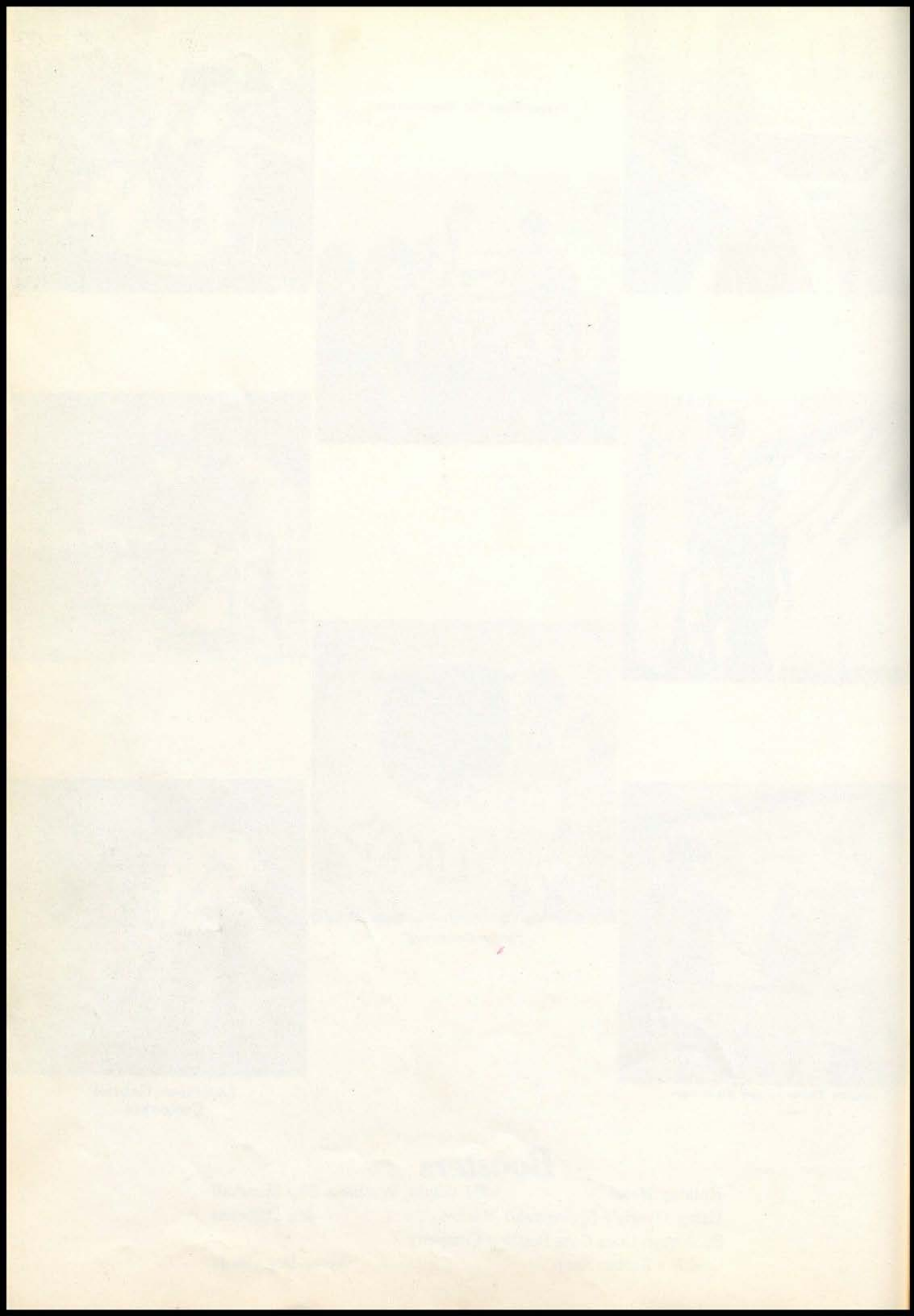
Harry Oyerly's Springstead Market

Joe Opticans

St. Joseph Coca Cola Bottling Company

Grable's Barber Shop

Acree Dry Goods





Jill Tucker
Mascot

1st Place in K-36 League



Dorothy Kneller

"The Monkey's Paw" was the title of the exciting drama given by Wathena High School at the one-act play festival at Midway, February 13. Mrs. Dorothy Kneller coached the play.

"THE MONKEY'S PAW"

Mr. White	Dick Hewins
Mrs. White	Nancy Hewins
Herbert	Bill Manville
Sergeant-Major Morris	Fred Walter
Mr. Sampson	Melvin Goin



TRACK: Back Row: Coach, Gary Tucker; Jim Miller, Jim Elder, Philip Thomas, Melvin Goin, Mark Nold, David Deeken, Allen Hewins, Ronald Miller, Dennis Lester, Richard Hewins. Third Row: Dickie Schultz, Leroy Hewins, Stephen Boeh, Ronald Schultz, John Chambers, Jim Walter, Jim Drake, Dawson Minsch, Fred Walter, Assistant Coach, Lyle Modellmog; Freshmen Coach, Charles Cotner. Second Row: David Minsch, Daniel Dinning, Bill Nold, George Eisiminger, Nick Embery, Tom Miller, Donald Schultz, Rex Dishon, Daniel Benitz, Dennis Goin. First Row: Raymond Bell, Bill Christopher, Blaine Thomas, Brycen Rice, Alan Boeh, Bill Kiehnhoff, Harry Shane, Duane Thomas, Homer Ritter and Steven Ginery.





BOYS' CHORUS: Great concentration is used in this class to produce the best tone possible where a wide variety of selections are used to further develop the male voice. Mixed Chorus, which is composed of Girls' Chorus and Boys' Chorus, is the main feature in a Christmas program every year. Back row: Fred Allen, Richard Hewins, Lonnie Sollars, David Deeken, Jim Eisiminger. Second row: David Johnson, Lewis Myers, Harold Moss, David Minsch. Front row: Bill Manville, Dennis Sharp, Larry Cook and Warren Davis.



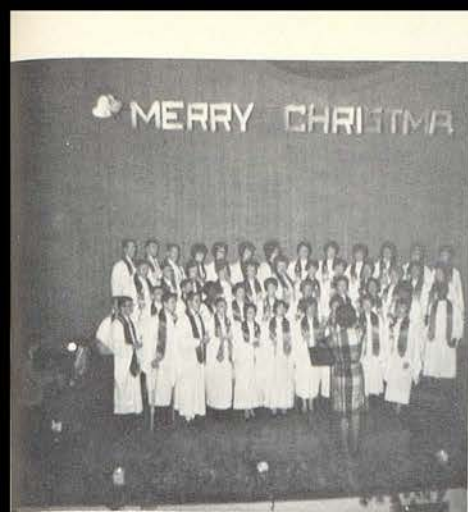
GIRLS' CHORUS: Miss Ritter's Girls' Chorus works hard to keep their voices in fine singing condition. They learn to sight-sing and they study a large range of different types of music; they sing from Bach to Gershwin. Back row: Glenda Abbett, Frances Davis, Judy Hewins, Ruth Kirschbaum, GERALYN Johnson, Melinda Madinger, Melanie Euler, Phyllis Bradshaw, Janice Hart, Betty Minsch. Third row: Janice Ward, Rose Mary Hart, Thresa Kiefer, Kathleen Ulsh, Janice Propheter, Pamela Christensen, Marilyn Hartman, Karen Harman, Judy Petit. Second row: Janeth Shields, Lila Schuman, Sharon Crittendon, Cheryl Butcher, Linda Burdge, Sherye Bittiker, Karol Madinger, Victoria Fehrman. Front row: Julie Grable, Mildred Propheter, Nancy Coursen, Joyce Gilpin, Ruth McVey, Nancy Hewins and Glenda Wise.

[Faint, illegible text block]

[Faint, illegible text block]

[Large faint, illegible text block]

[Faint, illegible text block]



The mixed chorus presents a Christmas Choral December 19. Accompanying the mixed chorus is Bill Manville on the piano and Mrs. Charles Harman on the organ.



Romona Silvy and Allen Hewins portray Mary and Joseph in the Christmas Choral.



Lynn Kneller, Harry Shane and Dennis Lester are the kings in the Christmas Choral.



It's fun to decorate a Christmas tree

Fred Walters, Pat Wakeman and Bill Kiehnhoff act as shepherds in the Christmas Choral.



Melanie Euler is watching the Nativity Scene



Ann Hewins and Kenneth Schmille were crowned Queen and King at the Senior Christmas Dance.



Fred Allen helps St. Nicholas at the Christmas Assembly.



Candidates for Christmas King and Queen are: seniors, Kenneth Schmille, Ann Hewins; sophomores, Linda Burdge, Homer Ritter; juniors, Nancy Hewins, Lynn Kneller; freshmen, Julie Grable and Jim Walter.



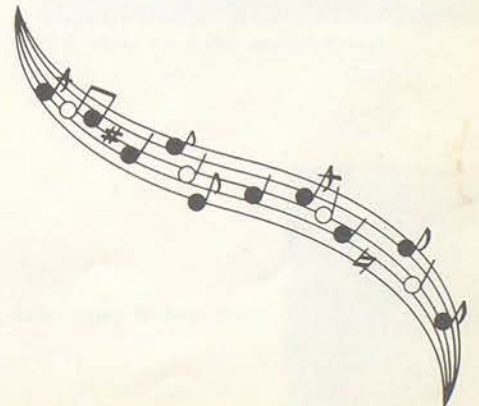
Band



The Wathena High School Band, which provides entertainment at our major sport events throughout the year, participates in the Apple Blossom Parade each spring and promotes school spirit. Red jackets with white trousers and red and white overlays give the band a smart appearance. The band greatly appreciates these new uniforms.



MAJORETTES: Five majorettes and a drum major energetically compliment the marching band. Janice Propheeter, Pamela Christensen, drum major, Linda Molloy, Kathy Ulsh, Glenda Wise and Karol Madinger.





Presented by the Senior Class
on October 18, 1963.

THE EAGER MISS BEAVER

Gazella Upshaw	Ann Hewins
Doreen Upshaw	Jan Propheter
Harland Upshaw	Fred Allen
Tillie Toothacre	Judy Webber
Canasta Brown	Janice Hart
Hank Peters	Jim Eisiminger
Bernice Beaver	Pam Christensen
Beaseley Scudder	Bill Manville
Verbena Van Wyck	Linda Molloy
Dickey Van Wyck	Wally Newton
Prentis Prouty	Bill Deeken
The Faceless Fiend	Melvin Goin
Student Director	Romona Silvy
Prompters	Joanne Gilpin, Kathy Ulsh
Stage Mgrs.	Larry Shalz, Bob Castle
Make-Up	Larry Cook
Tickets	Judy Wallace, Anna Orcutt
Programs	Bill Deeken, Judy Webber and Romona Silvy
Director	Karen Ann Ritter



"Up with your mitts, everybody!"



This is called the "new look."



Verbena tries to overbid the fossilized old buzzard Scudder.



"Listen everyone! Dear Niece . . ."



"I'd rather be a live cowardly calf . . ."

"Well, are you folks going to help me?"

Compliments of Kaelin Fruit Market and Meidinger Oil Co.





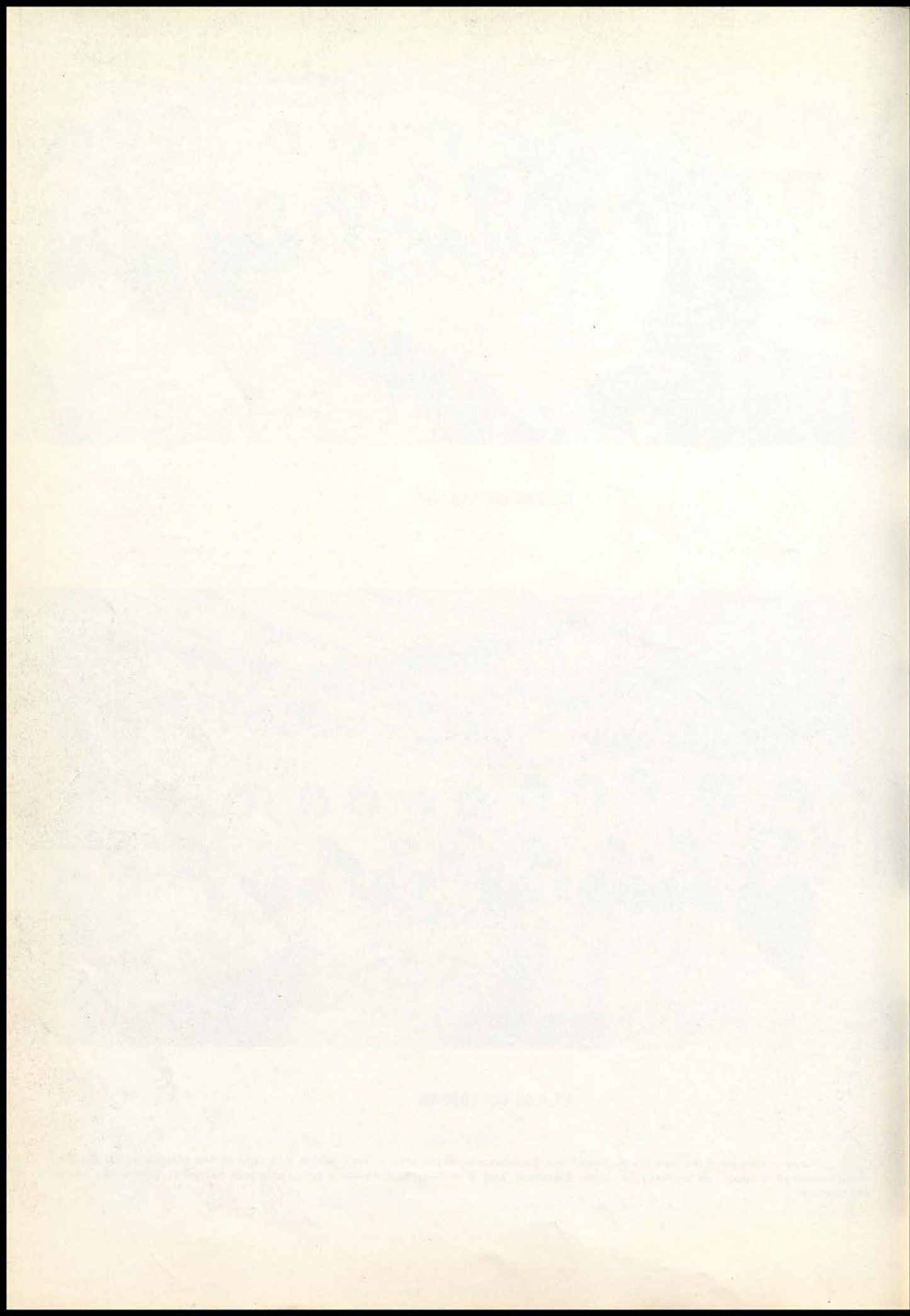


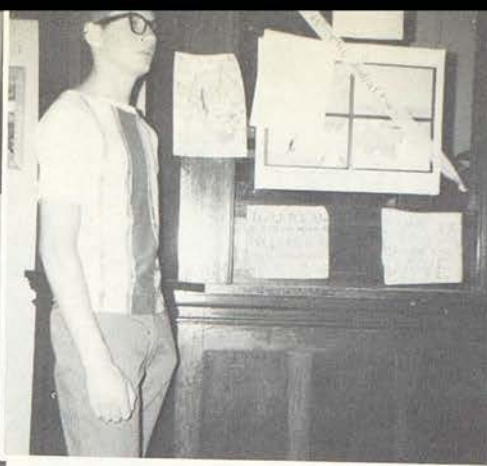
CLASS OF 1963-64



CLASS OF 1962-63

Apple blossom time was the theme of the junior-senior prom May 4, 1963, which was held at the Maples in St. Joseph. Guests entered through an archway of apple blossoms, and a wishing well beside a real apple tree helped to give a gay rustic atmosphere.





AMERICAN LEGION COUNTY GOVERNMENT DAY

The annual American Legion County Government Day was held December 5, at the Troy Courthouse. This program was sponsored by the Atchison-Doniphan County Council of The American Legion with the cooperation of the four Legion Posts of Doniphan County.

Students who went from Wathena are the following: County Attorney, Fred Walter; County Clerk, Ruth Kirschbaum; Clerk of District Court, David Minsch; County Commissioners, David Deeken, Pat Wakeman, Dennis Goin; Probate Judge, John Chambers; Register of Deeds, Karol Madinger; Sheriff, Donald Schultz; County Superintendent, Lynn Kneller; County Treasurer, Judy Pettitt; Agricultural Extension Agent, Ronald Schultz; County Engineer, Howard Crittendon; Home Economics Agent, Patty Laipple; Welfare Director, Nancy Hewins.



Cheerleaders serve at Dad's Night, November 15



Both parents were welcomed at Dad's Night.

CONSTITUTION
THE FEDERAL GOVERNMENT

The Constitution of the United States is the supreme law of the land. It is the foundation of the federal government and the rights of the citizens. The Constitution is divided into seven articles. The first three articles establish the three branches of the federal government: the legislative branch, the executive branch, and the judicial branch. The last four articles deal with the states, the federal government's powers, and the rights of the citizens.



"Is there anything we can do to stop him?"

JUNIOR PLAY

November 22, 1963

Mr. Maxwell	Fred Walter
Mrs. Maxwell	Karol Madinger
Betty Lou Maxwell	Nancy Hewins
Bernadine Smith	Glenda Wise
Wilbur Maxwell	Pat Wakeman
Hercules Nelson	Lynn Kneller
Connie Maxwell	Pam Warren
Craig Moore	David Deeken
Mr. Moore	Philip Thomas
Del Marshall	Dennis Goin
Aunt Mary	Ruthie Kirschbaum
Miss Blayne	Gerri Johnson
Stage Managers.....	Nick Embery, David Minsch, John Chambers
Make up	Judy Pettit, Linda Frankovich
Tickets	Mrs. Kneller, Mrs. Corder
Programs	Patty Laipple, Sandra Weber
Advertising Manager	John Chambers
Junior Class Sponsors	Charles Cotner, Dorothy Kneller
Student Directors	Georgia Libel, Elizabeth Sauer
Assistant Director	Karen Ann Ritter
Director	Charles Cotner



"WILBUR! Get up this instant! You're talking out of your head!"



"Are they having what, Dad? Of course not!"



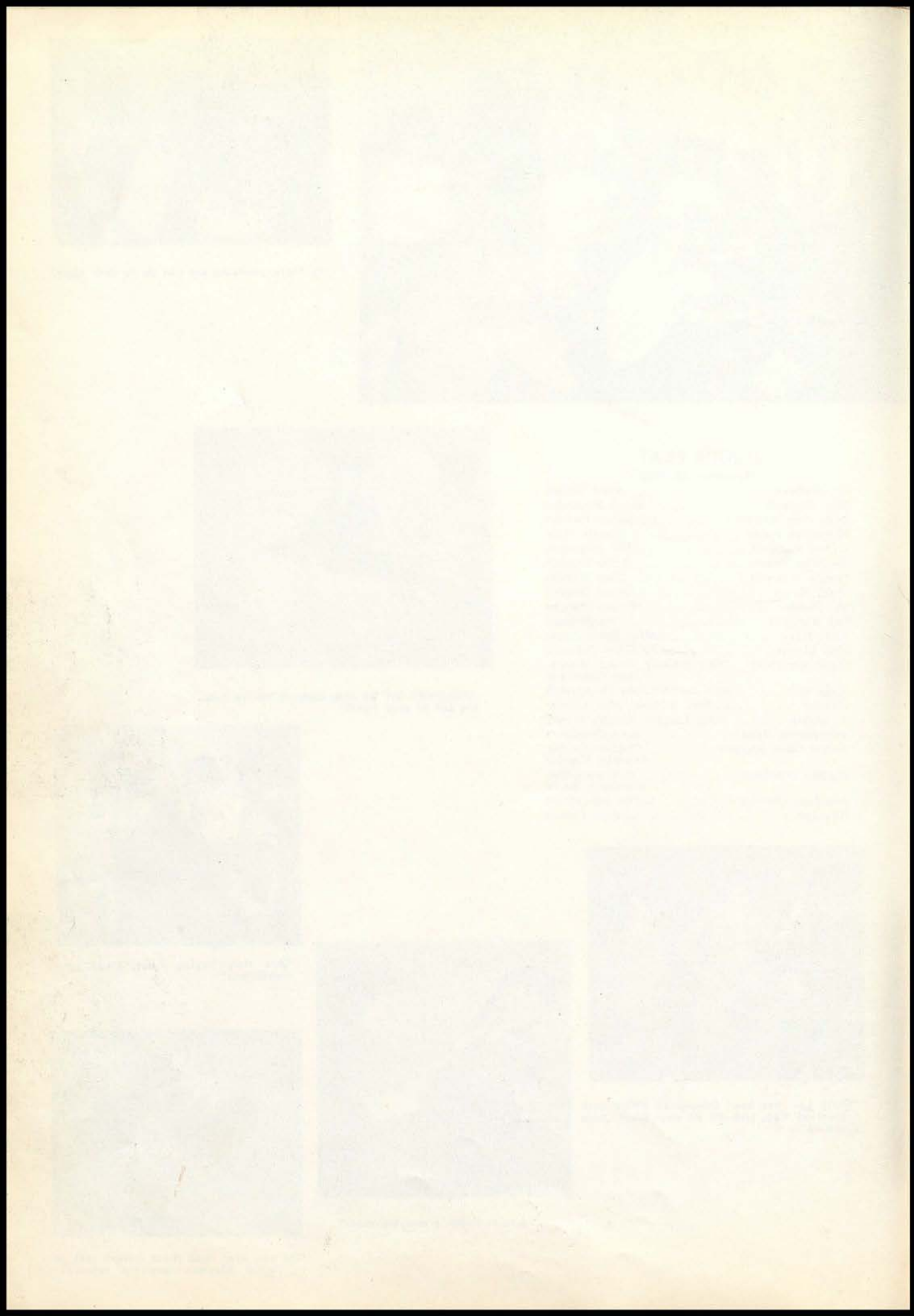
"Betty Lou has been having an affair with a married man, and it's all your fault, John Maxwell."



"And to think, a married man!"



"Do you ever read those letters sent in to Vester Blayne's love-lorn column?"





Library assistants help in the many duties involved in library service and with Mrs. Warren, promote more and better reading among the students of Wathena High. Lee Brandt, Mrs. Warren, Bill Kiehnhoff, George Eisiminger, Bill Nold, and Lynda Fulcher are seen here. Not pictured is Jolene Beckman.



"Quick, what's the answer?"



"I don't think Mr. Tucker would appreciate that joke!"



Let's twist again!



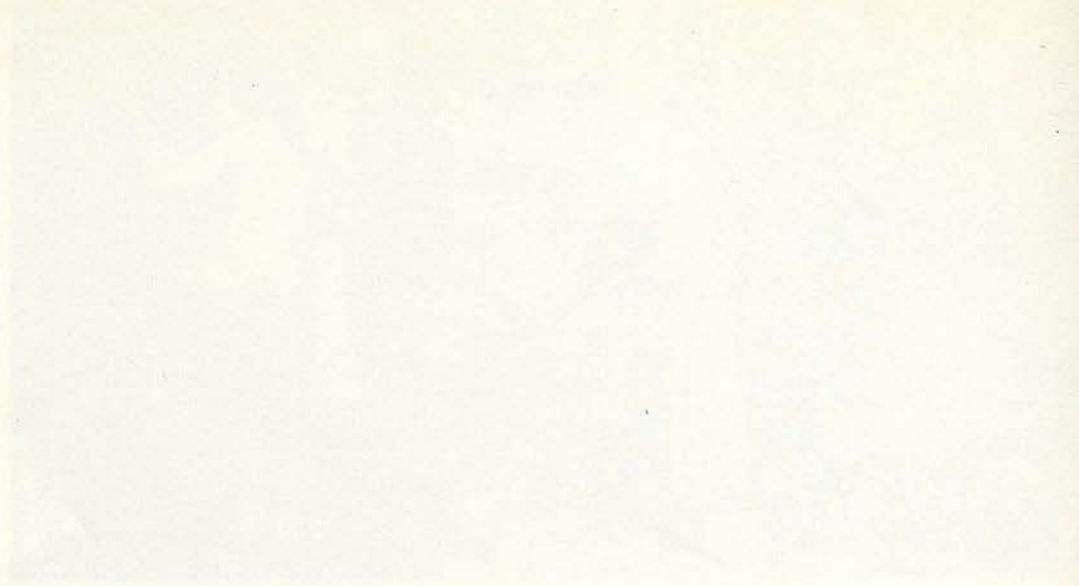
Girls, really!



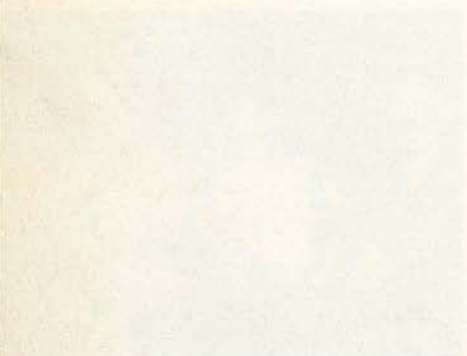
"Do you have permission to be in that locker?"



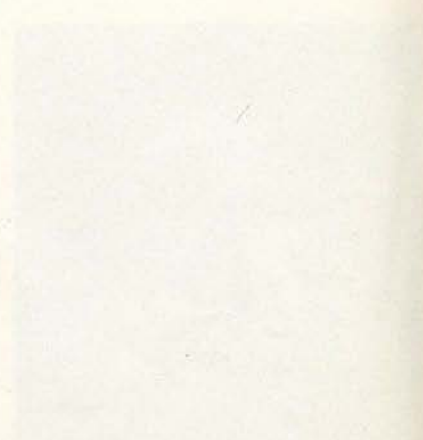
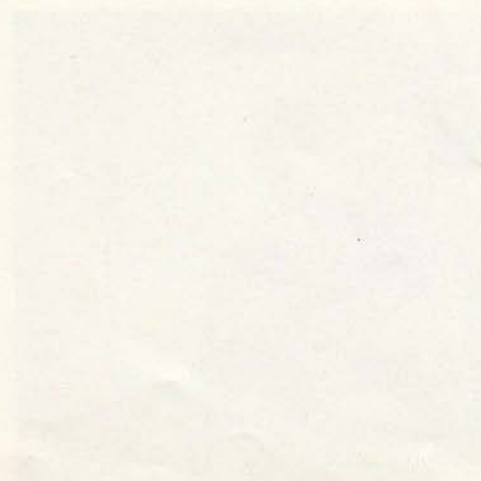
Second Hour "Study" Hall?



The United States of America do hereby certify that the within and foregoing is a true and correct copy of the original as the same appears on file in the Department of the Interior at Washington, D. C. this 1st day of January 1900.



Witness my hand and the seal of the Department of the Interior at Washington, D. C. this 1st day of January 1900.



Very truly yours,
[Signature]



Mike Studer Patty Laipple



Anybody for poker?



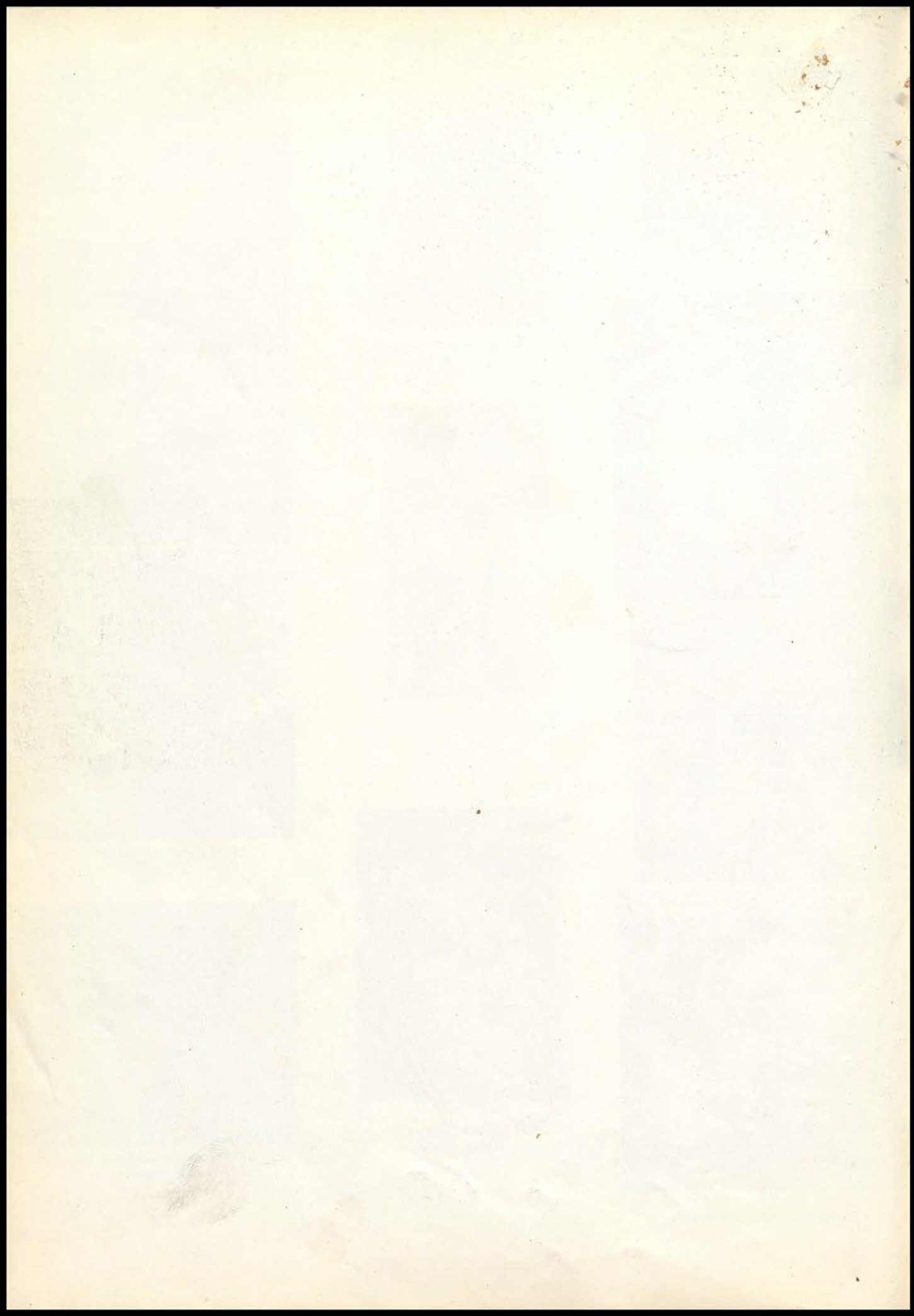
Mrs. Mary Engeman
Head Cook



Harry Shane and Edna Shane
late enrollees

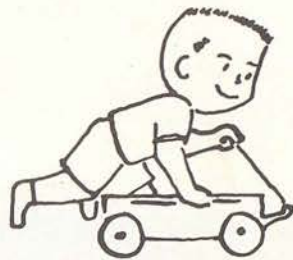


Comprende usted el espanol?





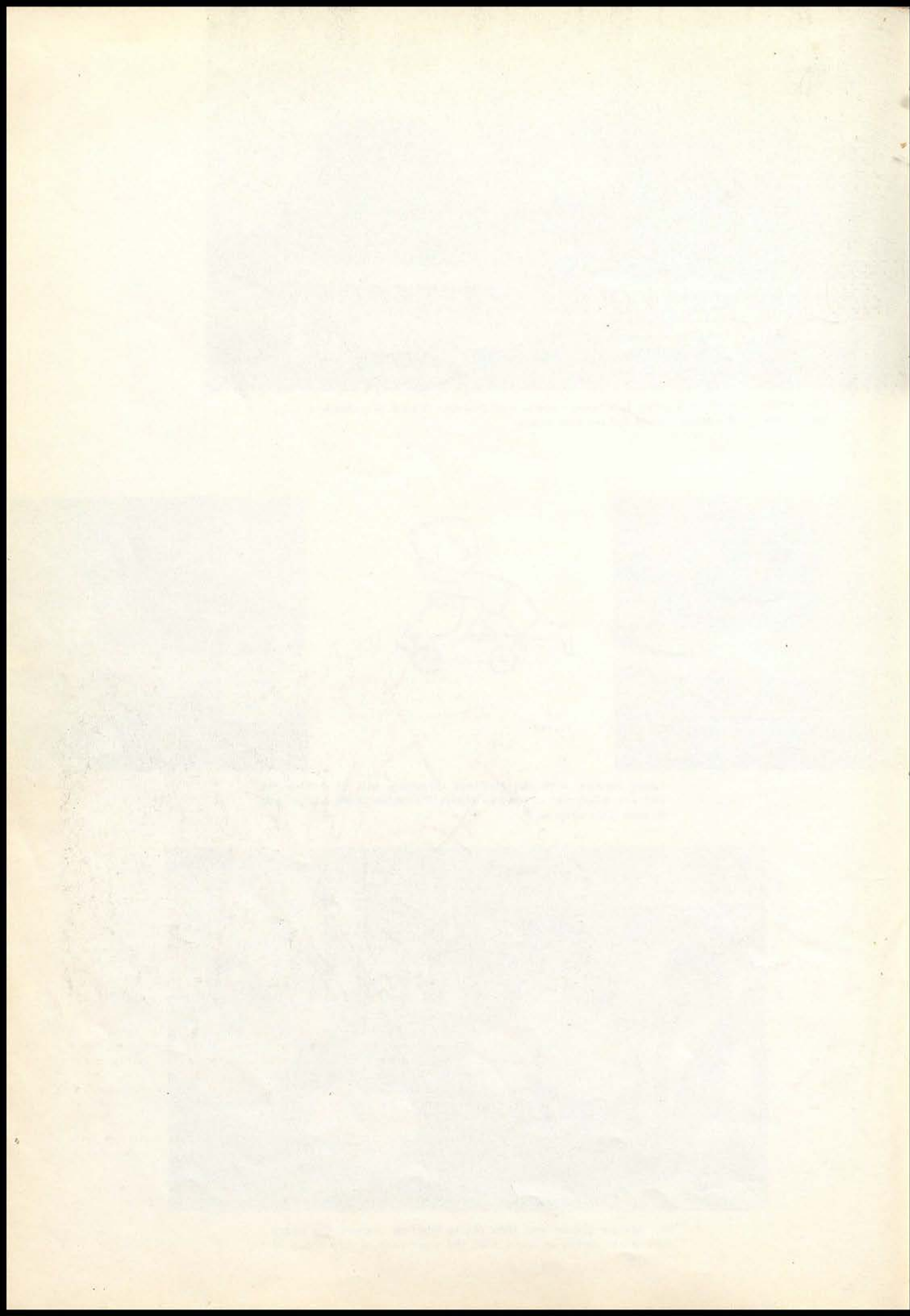
Bus drivers, Lawrence Gabriel, Lawrence Pankau and Norman Sigrist are standing in front of the buses loaded for the trip home.



Leroy Hewins, with Mr. McCloud directing, will be driving the Driver's Education car, while Nelita Slaughter, Ruth McVey and Brycen Rice observe.



Mrs. Margie Jacobs and Mrs. Marie Houlton prepare the nutritious meals served at noon, with the assistance of this group of students.





The Student Council works for the general welfare and betterment of the school. By establishing a Hall of Fame plaque, the Council each year honors members of the graduating class who have been outstanding in athletics, in scholarship, and in special activities. A new project this year was a clothing collection for underprivileged children in the Southern Appalachian Mountains. Pictured are the members: Back row: Jim Eisiminger, president; Miss Kiefer; Nancy Hewins, secretary; Bill Deeken; Homer Ritter, community council representative; George Eisiminger, community council representative; Ruth Kirschbaum; David Deeken, vice president; Jim Walter. Front row: Daniel Benitz, treasurer; Larry Cook and Duane Thomas.



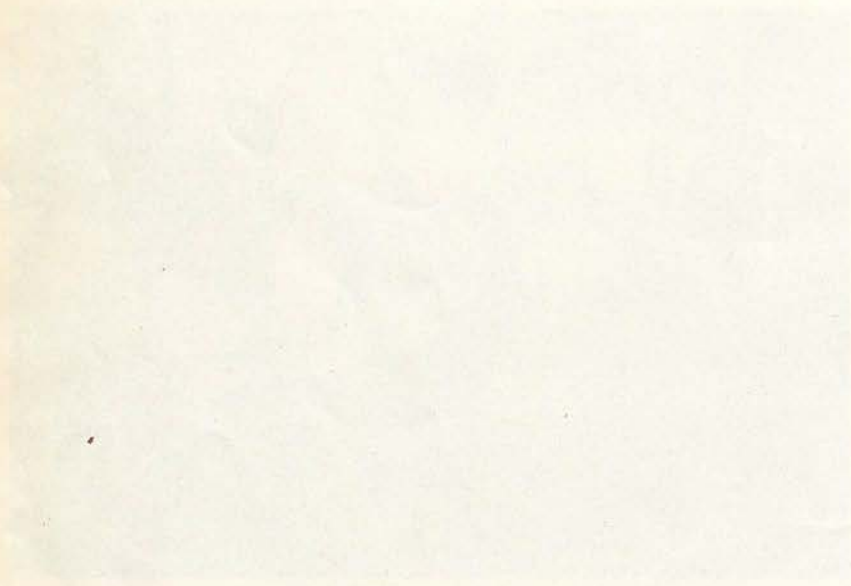
YEARBOOK STAFF: Back Row: Larry Cook, music page editor; Kathleen Uish, class page editor; Janice Propheter, activity pages; Fred Allen, business manager; Ann Hewins, class page editor; Linda Molloy, class page editor; Bill Deeken, business manager; Ellen Warren, advisor. Front Row: Jim Eisiminger, sports editor; Judy Webber, activity pages; Bill Manville, co-editor; Pamela Christensen, senior class editor; Janice Hart, senior class editor; Romona Silvy, co-editor; Melvin Goin, sports editor and Mike Studer.

This yearbook tells the story of the people of our school. On these pages we have tried to preserve the many memories of this year. We are grateful for the opportunities that have been given us.

Our special thanks go to the merchants, professional men, and friends of the school who, by sponsoring pages, made it possible to offer this 1964 annual to the school.



Faint, illegible text or markings located below the top stamp, possibly bleed-through from the reverse side of the page.



Faint, illegible text or markings located below the middle stamp, likely bleed-through from the reverse side.

Faint, illegible text or markings located at the bottom of the page, likely bleed-through from the reverse side.



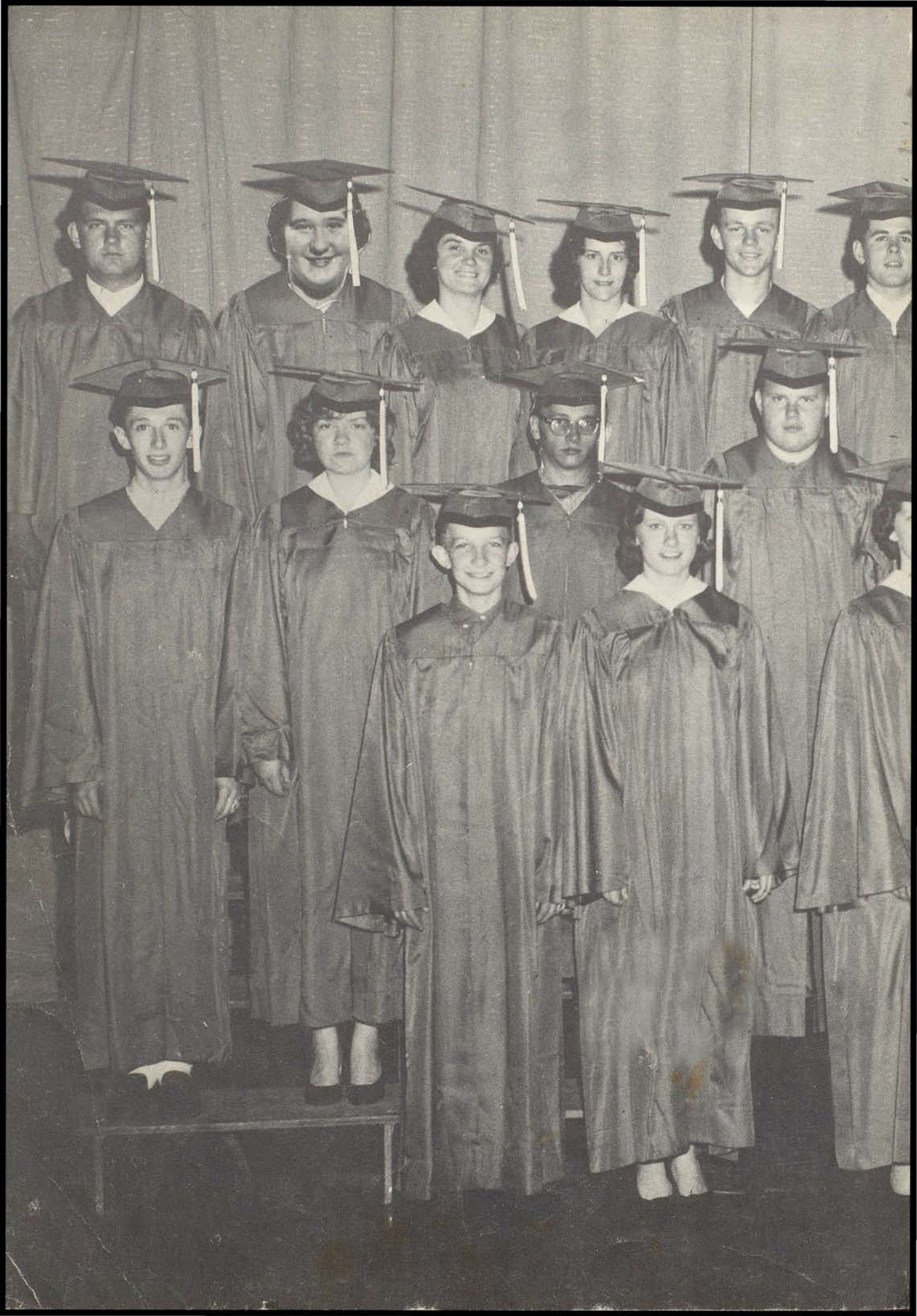
INTER-COLLEGIATE PRESS

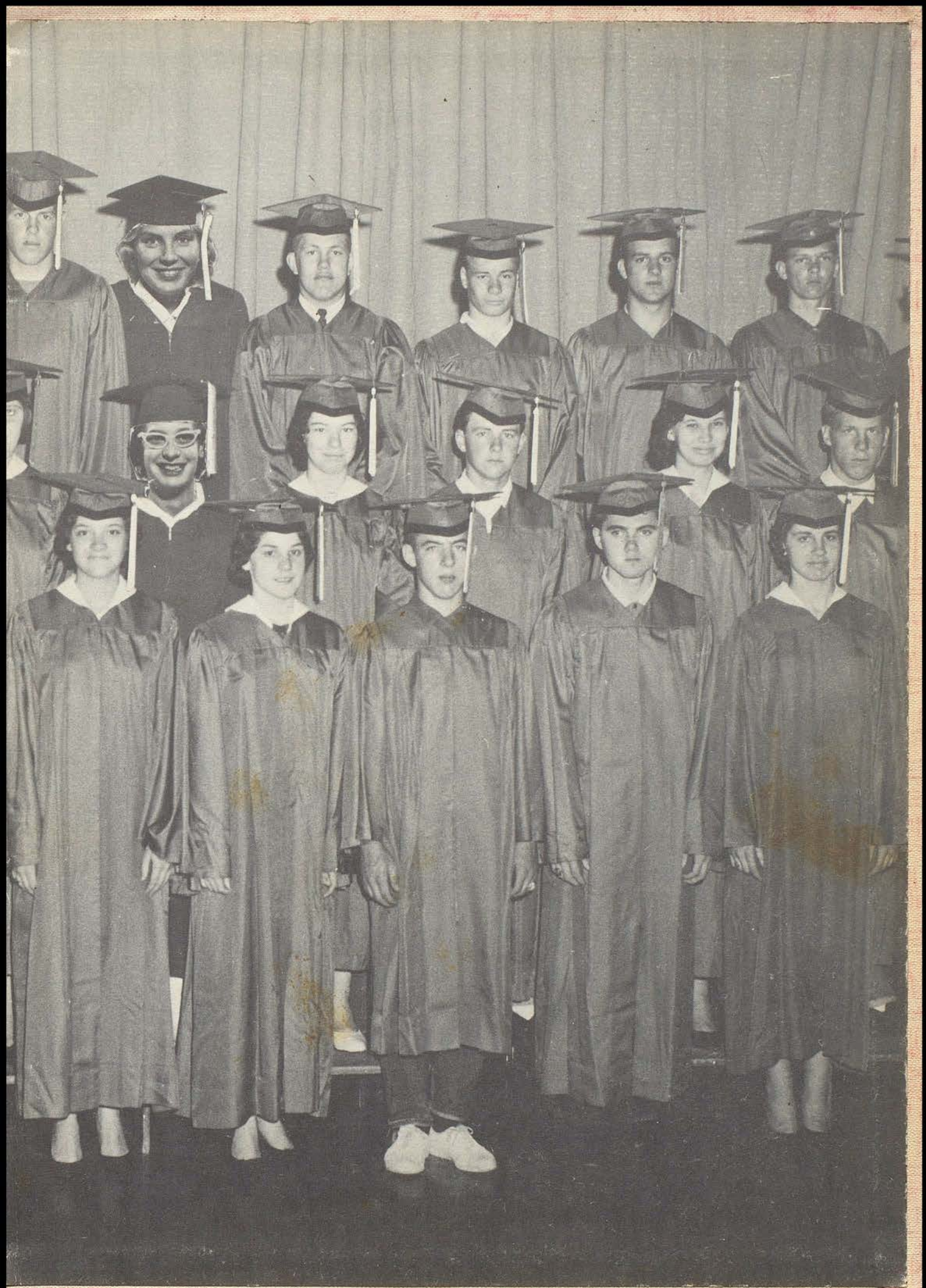
Kansas City — Winnipeg

Yearbooks — Yearbook Covers

Diplomas — Graduation Announcements

USA







Custom Printed by
INTER-COLLEGIATE PRESS