

## History of Severance Schools

The first school in Severance was built in 1871 at the site of the Christian Church. It was built with wood frame and not large and was enlarged the following year to two rooms. The cost was \$1200. Before that the only school in the area was Syracuse, the present site of the Midway School. It started with one teacher but soon added another. The addition cost another \$1300 but was soon outgrown. The second school was frame also and built below the brick school. The white frame was built in 1891 and started with a two year high school. In 1911 it was enlarged to a four year. The brick school on the hill graduated its first class in 1928. It had the nicest gym around and hosted many tournaments. After the schools consolidated it was used for a Junior High School. It was torn down in the seventies. The 1871 school was used for the Christian Church before the present one was built in 1915. It is in the process of being razed.

Beverly Kentzler

The Severance .I.O.O.F Hall was used for many activities, built in 1884. This picture is the mens night classes in the early 90's. It was used for basketball, plays, silent movies, bazaars, there was a lawyers office upstairs in the early years. Severance Rural Fire District now occupies site.

B.K.

# Teacher recalls old schools

Come along and reminisce with me about the life of a school teacher who pioneered in Kansas during the early 1930s.

My first school was in a rural community about 12 miles from my hometown. It was situated on a hilltop overlooking Wolf River, a small tributary of the Missouri River. Thus, the name Wolf River was given to the school.

It was a white frame building consisting of one large room with an entrance hall and cloakroom. A large water cooler was at one end. Each pupil had his own drinking cup.

**ON FRIDAY** afternoons, we had spelling bees and arithmetic matches. My desk was at the front of the room with a long recitation bench in

front. I always had a bouquet of goldenrod or other wild flowers on my desk picked by one of my students en route to school. I was lucky not to have an allergy.

**THE POTBELLIED** stove with a guard on it was our source of heat. The larger boys kept the coal scuttles filled; however, it was my job to build the fires and do other janitor work.

We had outdoor facilities, and during blizzards and dust storms, the larger children escorted the smaller ones to the toilets to be sure they arrived and returned safely to the schoolroom.

**WITH 28 PUPILS** and all grades, my working hours were from 7 a.m. to 6 p.m. Although school started at 9 and dismissed

at 4, I had to plan for the next day.

I remained at Wolf River for seven years. My salary had increased from \$65 per month to \$75. I was then offered a position at another school.

**THIS SCHOOL**, called Moray, was in a Norwegian community. It was a modern building with two rooms, a library, a basement with a stage for programs, and indoor facilities. It had a furnace that had to be stoked.

The library contained books, a sand table and a museum that we started.

No matter how long ago it had been, whenever we have our reunions, my kids still call me Miss Ruth.

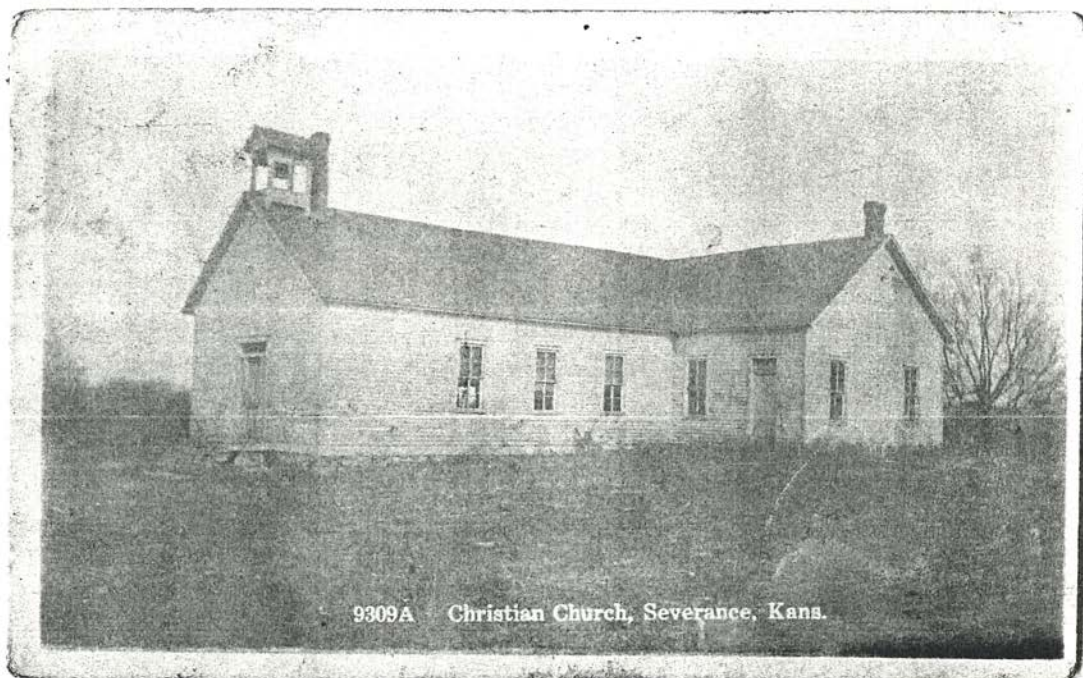
**Ruth Barnes Heaston**



Syracuse School located on present playground of  
Midway School. Moved to Bendena as home for Edna (Alfred)  
Christensen. Closed between 1935-40. Used by V.F.W. for  
blue rock shoots for awhile.



Philip -



1870 - One wing  
1<sup>st</sup> Severance school located on Christian Church hill  
2<sup>nd</sup> wing - enlarged in the next cpl. year as enrollment increased + hired 2<sup>nd</sup> teacher.  
By 1890 had outgrown so built white frame 1 story school across from Methodist Church (South).  
This school was enlarged to 2<sup>nd</sup> story later.  
In 1928 the brick school was built, east on hill, of white frame school. This school was torn down in 1970's

1890-1927  
Severance  
High School





# Old School Building in Severance

Built 1890



B9642 School Building, Severance, Kans.

This is a photo of the wooden school house that served the Severance community around the turn of the century. We have not been able to find much information on the building. Do any of our readers have some? (Photo courtesy of Irma Lee Walsh)

New Bldg  
Sev. Bldg  
1928





Graduating Exercises  
SEVERANCE HIGH SCHOOL  
M. E. CHURCH  
TUESDAY EVENING, MAY 13

---

Invocation - - - REV. DELBERT WOODS

Solo - - - MR. THOMAS D. SPRINGER

"Lullaby from Jocelyn" - *B. Goddard*

"Dear Old Pal of Mine" - - - *Rice*

Address - - - DR. WILLIAM OESCHGER

Music - - - - - MISS ENID MOORE

Presentation of Diplomas - SUPT. ALICE REID

Benediction - - - REV. DELBERT WOODS

*Severance High School  
Alumni Reunion*

1915

**CLASS ROLL**

\* Means Deceased

**1891**

\*Eva Ryan Swayze

**1896**

\*Lizzie Corcoran, \*Birdie Curtis, \*Walter Broyles,  
\*James Campbell

**1899**

\*May Broyles, May Campbell, \*Hugh Corcoran,  
\*Edith Heeney, \*Turner Lyons, Guy Willis

**1902**

\*John Corcoran, Hallie Eaton, Willie Broyles,  
\*Beht Drake, W. J. Hargis, Jessie Harpster, \*Ed  
Heeney, Ray Randolph, Mable Merrick, Her-  
bert Sharp, \*Pearl Stout

**1903**

\*Emma Babcock, Helena Gray, \*Georgie Heeney,  
\*Muriel Showers, \*Florence Leonard

**1910**

Emma Anderson, Dora Albers, Elmer Bearg,  
Closky Dittmore, Christian Anderson, Myrtle  
Ebeling, \*Ed Fullbright, Earl Hettick, \*Luther  
Miller

**1913**

Edna Broyles, Barney Heeney, \*Samuel Lan-  
caster, Byron Smith, \*Vincent Ward

**1914**

Guy Corbet, Dora Ellis, Francis Gray, \*Raymond  
Hancock, Hada Moyer

**1915**

Ida Bearg, Nora Corbet, \*Catherine Lancaster,  
James, Lowe, Toll Ware, Donna Moyer, Howard  
Rifer

**1905**

\*Ray Adams, \*Lulu Drake, \*Wilbur Friend, Wil-  
liam Butler, Levi Friend, \*Cora Howe, \*Myrtle  
Leonard, Otis Newton

**1907**

\*Harry Bearg, Anna Ebeling, John Gray, \*Grace  
Stout, Mary Devereux, \*Nora Ward, \*May Maher

**1908**

\*Horace Coy, Nellie Chapman, \*Thomas Delaney,  
Joseph Gray, \*Cecil Lowe, Viola Smith, \*Roy  
Vanbibber, Harry Ware, \*Roy Byers

**1909**

\*Otto Butler, Arthur Albers, Dee Byers, Rosa  
Caudle, Myrtle Chapman, \*Worthy Dare, \*Harry  
Ebeling, \*Cornelius Flynn, Alice Heeney, Katie  
Lonberger, Ruth and Rosetta Milburn, \*Alma  
Moyer, Barbara Moyer, \*Carlisle Smith, \*Blanche  
Vanbibber, George Springer, Anne Ward

**AUTOGRAPHS**



## High School News Letter

Jan. 23, 1927

### Last Years Seniors Rank High

At the beginning of this school year 5137 freshmen entering twenty eight colleges in our state were given a test in English composition. The highest possible test score was 110 points. The median grade for students from all the high schools represented was 63.96 points. Our two girls, Marie Corcoran and Ruby Hettick, made grades of 67 and 91. The one who made the score of 91 ranked four points above the median score for the state and two points above the median for class A schools, including such schools as the Kansas City High School. And the one who made the score of 91 points was one of the 513 of the 5137 who ranked highest in the test. She was among the top ten percent of all students who took the test. 91 was the highest grade made by any student from Doniphan County.

### Home Talent Lyceum Number

Miss Ebner has begun work on some one act plays to be presented in the near future as our fourth lecture course attraction.

### Art Class Grows

Marguerite Fullbright and Murl Higgins are new members of the art class. The class now numbers seven students. This semester the new students will work in charcoal. The old students will soon take up the study of pastel. Patrons are invited to come and visit the class at its work. The class hour begins at one o'clock and lasts eighty minutes.

### First Semester Closes

January 14th marked the end of the first semester. The attitude of the student body the last semester has been splendid and much excellent work has been done. Of course some very ordinary work was done and there were a few failures; we hope there will be still fewer failures at the end of this semester. Following is a list of the names of students who received a grade of one plus in a subject for the whole semester with the name of the subject in which the grade was made:

Lola Dittmore--English, French, art, economics.  
Ruth Barnes--economics, English.  
Lorise Dittmore--French.  
John Fullbright--history, French.  
Paul Libel--English.  
Marie Anderson--English, French, harmony, geometry.  
~~Elizabeth Dittmore--English, history, French.~~  
~~Opal Winter--English, French, geometry, art.~~  
Sara Ann Drake--English.  
Marguerite Fullbright--English, French, harmony.  
Irene Case--English.  
Mollie McNett--English.

### School Board Meeting At Denton

The school board meeting to be held at Denton which was postponed some time ago on account of the snow will be held on February 2d at ten o'clock. The meeting has been arranged especially for school board members and patrons of the school. We hope as many as can will attend this meeting.



### County Scholarship Contest

Our high school will be well represented in the county scholarship contest the last of next month. The following students have been chosen to compete in the different tests: in English I, Marguerite Fullbright and Mollie McNett; in English II, Marie Anderson and Elizabeth Dittmore; in English III, Lola Dittmore and Paul Libel; in algebra, Marguerite Fullbright and Irene case; in geometry, Opal Winter and Marie Anderson; in physics, John Fullbright and Paul Libel.

### New Student

Emmett Schriner who attended the Denison High School the first semester of this year is now enrolled with us as a freshman. We are glad to have him with us.

### Senior Class Doubled

Everybody is glad to have William Hylton back in school. The doctor believes that William's leg which was wrenched at the knee as well as being broken near the ankle will be as good as ever in a short time. Because William was unable to play any more basketball after he was injured the team was left in a weakened condition to finish the season and go through the tournament.



## CHAMPIONSHIP ASSURED.

### Jinx Took Usual Toll at Leona.

Nothing but calamity can prevent S. H. S. from winning the County championship. There is only two more games left to play, one with White Cloud at Severance and one with Wathena at Wathena. These should be easy victories for S. H. S. owing to the fact that S. H. S. defeated White Cloud on their own court 62 to 15 and Wathena at Severance 71 to 0.

S. H. S. was ousted from the thousand per cent column by their defeat at Leona. This was contrary to dope but dope is often upset. Severance ran up 14 points against them at Severance, more than we counted against any other team but owing to the unusual handicap of the small court and because of the fast rate at which the Leona boys were traveling Severance met defeat, 49 to 30.

#### Elwood

Elwood came to Severance expecting to go home with two victories to their credit but they were badly disappointed.

The girls game was fast throughout and the crowd was kept in wild excitement during the whole game. The game was decided in the last few minutes of play. The Elwood girls won by a score of 23 to 21.

The boys game was a walk-away for Severance. They started a whirlwind offensive and continued with it throughout the game. The Severance squad was hitting the basket with regularity while the Elwooders were unable to cage them when they had a chance. The score at the end of the first half was 30 to 5 in favor of Severance.

The Elwood boys came back stronger in the last half and made 16 points but Severance continued with their goal shooting and secured 33 points, making the final score 63 to 21. The points made for Severance are as follows: Riffer 26, Dye 27, Prawl 8, and Moyer 2. For Elwood, Wilkinson 5, King 7, and Chaney 9.

#### Leona.

S. H. S. boys met their only defeat of the season at Leona, February 3. The game started with the usual pep of a fast game. The Leona boys soon got into motion and had several goals before the Severance boys got on to the 12 foot ceiling and the small floor space. The Severance boys were going fine but the Leona boys had too much of a lead on them and the score was 21 to 15 in favor of Leona.

In the last half Leona continued at their fast pace. Sherman and Ultgen were scoring them from off the walls and ceiling. The final score was 49 to 30 in favor of Leona. For Leona, Sherman scored 28 points, Ultgen 12, and Dock 9. For Severance, Dye 14,

## Things About Our Town.

We have—

- Two of the most modern cafes in the county.
  - One well stocked drug store.
  - Two first-class general merchandise stores.
  - A crystal white butcher shop, which we claim is the best in the county.
  - An exclusive shoe store.
  - Two modern garages.
  - One of the strongest banks in the county.
  - Three of the finest churches in any town of its size anywhere, each with a resident pastor.
  - A News Depot with a constant supply of daily papers, magazines, and novelties.
  - A hardware and furniture store.
  - Two fine barber shops.
  - A bakery which supplies several towns with bread.
  - Two elevators.
  - A blacksmith shop whose proprietor knows his business.
  - A Post Office which is practically new.
  - One of the oldest newspapers in the State of Kansas.
  - Two efficient dentists.
  - Two excellent doctors.
  - A defunct Turner Hall.
  - A commodious I. O. O. F. Hall.
  - Several beautiful modern homes.
  - A sufficiency of fire and light insurance agents.
  - Electric lights.
  - A street sprinkling wagon.
  - English bootblacks with strap and pack.
  - Four passenger trains and two locals daily.
  - A strictly modern Sealey-Mattress hotel.
  - A high class hardware and furniture store.
- We have everything which a town of four hundred needs with the possible exception of water works and fire protection and proper housing for our school.

Riffer 10, Prawl 4, and Dittmore 2. The Severance girls were defeated by a score of 59 to 5.

Holcombe, physical director of the Y. M. C. A. at Atchison, referred.

#### Denton.

The Denton boys came to Severance with blood in their eye, hoping to defeat the Severance boys, thus making Denton, Leona, and Severance tied for first place in the race for this cup.

The largest crowd that ever attended a basket ball game here was present. The spectators crowded along the edge of the court and along the ends making unusual rules necessary and cutting down the playing space.

The game started in a way that foretold a hard fight to the end. The Denton boys got started and were eight points ahead of Severance at one time. After about ten minutes of play the Severance boys began to show good team work and caught up with their opponents. The score was, Severance 14, Denton 13, at the close of the first half. Denton had held the score by sacrifice in personal fouls.

In the last half the fast play of Severance forced the Denton squad to extremes and the personals began to pile up. Early in the half Chaney

was warned, "three" Cecil Denton completed his four, quickly followed by Captain Burke. The score was even at this period. (It is hard to convince the Denton aggregation that the game was not even for they refuse to take into account that the Severance boys had acquired but few fouls). After the removal of Burke and Denton the game was no longer in doubt, the final score being 36 to 23 in favor of Severance. Riffer played a good game and scored twenty-one points, while Dye his running mate, scored thirteen. Prawl made the other two points. The points scored for Denton are as follows: Burke 12, Joyce 7, C. Denton 2, and Callahan 2.

The Denton girls defeated the Severance girls 38 to 6.

The referee, R. F. Holcombe, of Atchison Y. M. C. A., is one of the best in northeast Kansas and is acquainted with both teams. There can be no criticism of any of Holcombe's decisions.

Sixteen mothers were present to attend the "Home Meets School" entertainment held at the school, February 20. Another meeting will be held soon.

## CHAPEL SPECIALS.

### Kansas Day

January 30th the officials of the Association and of the Students Activity Association gave a fifteen minute program. The history of our state was given and each officer took up one phase of the life of Kansas. Poetry written by one of our inhabitants, Mrs. Hattie E. Peeler, was read. We really do not realize how wonderful our state is, until her birthday comes around and we start to think.

### Lincoln's Birthday.

The Seniors rendered the program for Lincoln's Day. sketches were given of Lincoln's life, which related old but new happenings. His picture was given the honor position on the wall and patriotic songs were sung by all.

### St. Valentine's Day.

The Juniors came forth with another of their snappy programs on St. Valentine's Day. After a history of St. Valentine was read by Margaret McLaren the Juniors presented each student with a valentine!!! Yes, they were valentines of all shades and colors. The Freshmen were given the suitable color—green.

## PHYSICAL EXAMINATIONS.

Miss Ruth Holiday, County Nurse examined all students in Severance High School, Monday the 13th. Thirteen were found with defective vision, three with defective teeth, twelve with diseased tonsils, five with defective hearing and four were ten per cent or more underweight. Four perfect students were found.

We feel that if Miss Holiday's work could be continued from year to year it would be a great benefit to the community.

## HOME MEETS SCHOOL.

### First Meeting Successful.

The Students Activity Association entertained the fathers and mothers of its members in a meeting of Home and School at the school house, February 20th. The meeting was called to order by the President of the Association, Albert Shay. The secretary called the roll and included the names of the guests. An interesting program was then presented. The Girls' Glee Club sang two selections, "Boat Song" and "Santa Lucia." A vocal solo by Miss Caroline Piper followed. Speeches were made by Lois Dittmore, Wayne Dye, and C. I. Moyer Jr., on topics concerning the school life as they desire it to be and as it is. Tom Springer sang "Speaks 'To You'". A recess was held until the refreshments were prepared, during which we had a great visit.



# HIGH SCHOOL LIFE

Twelve Issues a School Year.  
Price \$1.00.  
Students of Severance High  
Publishers.

Entered at the Post Office at  
Severance, Kansas, as second  
class matter.

## STAFF

Editor-in-chief Doris Hettick  
Business Manager, C. I. Moyer  
Local Editor, Annalene Ebner  
Exchange Editor, Thomas Lyons  
Smiles Column, Ruth Corcoran  
Athletic Editor, Wayne Dye

## ADVERTISING RATES

Locals, per line .05  
Display advertising, per in., col., .25

## EDITORIALS.

### Are You Guilty?

Most of us are. Do you put off getting your lessons when you take your books home until you are too sleepy to get them? Do you neglect them, thinking that maybe you will have time tomorrow? When that day arrives do you discover that you simply cannot find an extra moment and go to class without that lesson? When we have English speeches on Friday we come to class a few minutes late, snatch up a paper and peruse it feverishly. When class time arrives we excuse ourselves by saying that we couldn't find anything very interesting.

We are all guilty of procrastination (We'll wager that even the teachers are!) How much better it would be if everyone did everything at the right time. Our grades would be improved and it wouldn't be necessary to hurry so at the last moment. We might even prolong our lives, who knows?

### Reasoning Without Your Host.

Some of our worthy citizens seem to think that basket ball is the only subject taught in our high schools. We suggest that they come and enroll in any class, that of the Freshman for instance and see if they find anything to do.

### Black Hawk County, Iowa.

The average tax levy in the one-teacher schools was 11.6 mills. In both the Jesup and the Orange Township schools, the levy was 23 mills. But, at the same time, the levy in the city school of Waterloo was 32.2 mills. Our levy is 7 mills. 38-389-1996

The Sophomores gave an original program on Washington's Birthday, February 22. They impersonated children of the primary age and the way in which they made speeches, sang songs and act in school, on special occasions.

## EXCHANGE.

The Halstead "Echo" has been changed from a three column paper printed at school to a four column paper carrying ads. It has a much better appearance and resembles very much the Burlingame "Oracle" printed under Miss Nelligans direction last year.

Bendena has claimed that they never belonged to the Doniphan County basketball league and have been declared out. All games which they have played will not be counted.

Denton players tell us that in a recent game at Bendena, they were not treated with the best of sportsmanship. This may account for the close score.

The Whiting "Peptomist" contains a writeup about Miss Chambliss of the Huff's Business School of Kansas City, Mo. Everywhere she has been they speak highly of her. A speaker of this kind is worth more to an institution than any advertisement.

"This is a great prospect," said the prisoner peeping out of his cell window. "You shock me," said the same prisoner as the warden turned on the juice.—Ex.

In the triangular debate between the schools of Troy, Winchester, and Nortonville the negative teams each won the unanimous decision of the judges. This made necessary the averaging of the grades which gave the debate to Winchester by a little over one point. Merrick and Schwartz were the negative for Troy. They were awarded the rubber step ladder.

"My heart is in the ocean", cried the poet rapturously.

"You've gone me one better," said his seasick friend as he took a better hold on the rail.—Lampson.

After several severe beatings the Atchison High basket ball team seems to have new life and is making all the teams fight for their games.

## Graduates, Notice!

All resident graduates  
—of—

## Severance Schools

Are requested to meet  
—at the—

HIGH SCHOOL

TUESDAY, FEB. 28, 1922

## SMILES.

### His Definition

"What does college-bred mean, dad?" asked ten year old, Johnny.

Father, looked from a perusal of his eldest son's college expenses and answered: "Merely a big loaf, Johnny."

Margaret: "Thomas, close that window its cold outside."

Thomas: "You think it will make it any warmer outside if I close it."

### THE GLAD, GLAD DAY.

Millennium Will Come I Wot.

When no one makes suggestions. No one gives advice, and answers have caught up with all the questions.

### We Wonder.

The English II class was discussing the inherited rights of women to powder their noses.

Ruth Corcoran: "Some boys powder too for example, Bud."

Bud: "I never powdered in my life!"

Bright Student: Over read "Looking Backwards."

Second Student: "Yes once in an examination and nearly got expelled for it."

Mr. Mickel has a better ending for this:

Roses are red,  
Violets are blue

Which is:  
So am I

When the rent is due.

### Nut and a Rivet.

A crank's theory often needs only a rivet or two more to become a valuable discovery.

Miss Furney says the boys never use the glass in the north room. We have seen several in there.—The girls.

Professor.—How many senses are there?

Student: "Six"

Professor, "How's that? I have only five."

Student: "The other is common sense."

### Must Have Been.

Clergyman: "The couple I just married were deaf and dumb."

Reporter: Oh, then I'll say it was a quiet wedding.

Sophie.—"Got a minute to spare?"

Freshie: "Yes."

Sophie: "Then, tell me all you know."

Prof. Mickel: "How many know that grape fruit is a cross between lemons and oranges?"

Byron: "Yes, I did."

Prof. M. "You did? Well you're wrong."

Miss Holiday the health nurse, asked one little girl, "What causes dis-

## J. M. RILEY, Dentist

Office at residence. Phone 37

Hours: 9 to 12 a. m.  
1 to 5 p. m.

Severance - Kansas

W. J. SHELTON, M. D.

## PHYSICIAN AND SURGEON

SEVERANCE, KANSAS

Shoes for Men, Shoes for Ladies  
Shoes for Misses, Youths & Babies

EVERYTHING IN

## SHOES

EXCEPT FEET

You furnish the FEET, we'll furnish the SHOES. Best of makes for dress, street, at home or for work. To be had at

GUS EBNER'S SHOE STORE

## GOLD COIN

## FANCION

## STANDARD A

and

## BANQUET FLOUR

BRAN, SHORTS, OIL MEAL  
AND TANKAGE

at the lowest market price

## Severance Farmers Union

## A. F. RITTENHOUSE

MANAGER

## INSURANCE

### GET THE HABIT

of placing your insurance  
where you know it will be  
given prompt attention.

### DON'T TRUST TO LUCK

If you want to insure, be sure  
and place your policies with  
me, where you will get the  
best and the most for your  
money.

## HARRY WARE

General Insurance

SEVERANCE, KANS.

ease and lives in dark, damp filthy  
places."

The little girl replied: "Mosquitis."

Some young man calls his fair friend,  
powdered sugar. He says she is so  
sweet and is always powdered.



## GRADE NOTES.

### Grammar Room.

The Grammar Room was entertained with a Valentine party at the home of their teacher, Monday evening. Games, contests and a Valentine box furnished amusement for the evening. In the contests, prizes were awarded Thelma Shay, Leonard Lancaster, Homer Courtin, and Alice Cluck. Refreshments were served and all present had an enjoyable time.

The Seventh and Eighth grades are having a spelling contest. A prize is to be awarded by the teacher to the best speller at the close of the sixth month.

### Second Primary Room.

Seventeen of the twenty-three pupils enrolled in the second Primary Room were neither absent nor tardy during the January month. Only 6 days was lost by both grades and no cases of tardiness. We think this is a very good record.

Mollie McNett has earned four spelling certificates.

In the merit contest Mollie McNett and Leo McIntyre are ahead.

### Primary.

Everyone is back in school, who were sick with the chicken pox.

For the sixth month, Vivian Fuller and William Dittmore are ahead in spelling.

Mable Bahr has been out for the past three weeks with the "grippe."

Miss Holiday, the County health nurse, examined the first grade, Wednesday evening, and out of the class of fifteen, five had no defects and all had clean teeth.

The second grade was examined, Thursday morning and out of the class of eleven, ten had clean teeth and just three were underweight.

The month of February furnishes plenty of handiwork. Lincoln's birthday valentines and Washington's birthday.

The first and second primary and intermediate rooms had their valentine box together, Tuesday afternoon.

The Severance Athletic Club defeated the Leona Athletic Club, here, February 15th. The final score was 34 to 32.

Mildred Turley a former member of the Junior class has returned home from St. Louis on account of bad burns received at Christmas time. Mildred has been in the hospital for six weeks and returned home to recuperate before returning to school.

## LOCALS

Monday morning the students of S. H. S. were somewhat surprised when they entered the study hall to find their desks rearranged. On account of lighting conditions, the seats had been changed to a position facing the north, so that the light would come from the rear and the left of the room. Two years ago the seats were changed to a position facing the west, so that light came from the left only. The windows on the west being blocked.

caused a strain on the eyes of the students, especially the Freshmen. The students and teachers requested that the seats be changed. No one suspected that the change would be made so soon. When we entered the study hall, Monday morning, our mouths and eyes flew open and "Where's my seat?" was the first utterance. After finding a seat, came the job looking for your old seat to get your books. Maybe your old seat would be found in the other part of the room way out in the hall. At this writing, everyone is nicely settled, but many say they do not feel at home.

The Spanish II class is learning a beautiful poem, entitled, "Un Soneto."

The Algebra III class was given its first examination, Thursday.

The Commercial Arithmetic class has finished work in Aliquot Parts and addition and has taken up short methods of subtraction, multiplication and division.

The Algebra I class has finished the chapter, "Solution of equations by factoring" and are now doing fine work on "Fractions."

The Spanish I Class took a day off last week to remove the stains from the arms of the chairs in Miss Furney's room. Remarks were heard the next day about the brilliant whiteness of the woodwork, due to a vigorous scrubbing with lye, soap and water.

The General Science Class has just completed one of the most interesting chapters in the text. Some of the things they studied were; plumbing, ventilation and light. The next chapter they will study will not be so interesting. It is, carbon and its compounds.

The Agriculture class is making a thorough study of dairying. The most interesting part of weighing and testing milk will be taken up soon.

The English II class just finished the chapter on dramas, stories and have begun the chapter on reasoning, parliamentary law and debate. If they are as good at debating as they are arguing they will certainly produce several good debaters.

Ford and Chevrolet Batteries, . . \$22.50

See what cash will do—Saves you \$2.50

Fisk Casings, 30x3 1-2, . . . \$10.35

A. D. HALL

## DYE'S BARBER SHOP

For First class Work. Popular Prices. Newest Styles.

H. A. DYE, Prop.

## YOUNG MEN—LOOK HERE

### THE NEW CHECK SHIRTS

There's nothing quite so stylish as a Check Shirt, with detached collar to match. "Neat and Natty," for the young men that's "So Different." Hence, very attractive. Why go to the city and pay \$2.50 for the same kind we sell for . . . \$1.89

GEO. W. SPRINGER

## HEENEY HARDWARE

For high-class, good

HOOSIER CABINETS, MAJESTIC COOK STOVES, ROUND OAK HEATERS, CALORIC FURNACES, PYREXWARE, MIRRO-ALUMINUM.

Patronize a home merchant

## \* SPRAD'S \* PHARMACY \*

DOES IT RIGHT

Prescription line complete. Sundries, Jewelry, Fountain Pens.

SPRAD'S PHARMACY  
SEVERANCE, KANSAS

## GO TO WARD'S RESTAURANT

FOR SHORT ORDERS, HOT AND COLD LUNCH, FANCY CHOCOLATES & CHOCOLATE BARS. VELVET ICE CREAM EVERY DAY.

W. W. WARD

Severance, Kansas



## First "All County Five" Offered.

Picking an all county team is a hazardous business. Each coach has his own ideas as to the ideal players. It is of course easy to pick a combination that would beat the remaining possible, under most any conditions. But to pick the best possible combination is a difficult proposition. Probably the man most feared as an opponent and most conceited as an ally is Riffer, captain of the Severance squad. Though usually under a two man opposition Riffer is leading the league in scoring. He plays a heady consistent game, commits few fouls, and keeps his men playing all the time. His work has been an outstanding feature of Severance play and a considerable factor in determining the championship. For these reasons he has been chosen as captain of the mythical five but his position changed to that of guard.

The League is especially favored with forwards this season. Sherman of Leona and Burke of Denton are the hardest men in the league to stop. Their certainty on the free throw and their aggressive follow-up shooting give them the edge on any of the rest. They have my unanimous vote for their positions.

With a scoring combination as suggested by the three aforementioned the center position should be given to a man certain of the "tip" and able on defense. Ultzen of Leona fills the bill. He plays a clean fast game, probably making more improvement than any man in the league during the past season.

The guarding situation is different. we have no guards capable of stopping the mighty onslaught on the basket the above combination might make. For the remaining position. Severance of-

fers two candidates Prawl and Moyer. Leona might possibly advance the Benfers; Denton will holler for a place for Cecil. Elwood might want a place for Foster and White Cloud will hold out for Taylor. Since Riffer has been chosen for one defense corner, Moyer would probably work in better than any of the others. His clean play gives him the edge on C. Denton. Severance has never scored less than thirty-five points in any game (Leona game excepted) and our opponents have never touched thirty-five. This argues well for the Severance defense of which Riffer has played an important part. Moyer then is elected.

Just what this combination would do in a real contest is hard to say, but it would look pretty good on the floor: Riffer, Moyer, Ultzen, Sherman and Burke. It would be mighty hard to stop them.

For second team, Dye, Joyce, C. Denton, and the Benfers would make a nice combination. Lyons and Chaney would probably be as strong a combination as the Benfers but not as easy to say. Somehow a brother combination always sounds good. Prawl would work well in C. Denton's position. The fact that he has twice this season outplayed him being a strong argument.

What's the use of picking, your idea and mine may not at all coincide and the argument follows. We all indulge in idle speculation.—Mickel.

Sickness has claimed many of the students during the past three weeks. Our business managers, C. I. Moyer, was threatened with pneumonia the first part of this week. Alce Mosier had a bad cold for several days. Albert Shay had an ear ache. Capt. Renard Riffer had a cold last week and Clara Hardy has the chicken pox.

## BOX SOCIAL TROY HIGH SCHOOL FRIDAY NIGHT

WE HAVE the very best line of box candies and candy bars on the market. Also, Eskimo Pie, a candy bar a la mode, for 10c. Ice cream in stock every day, at the

# BUSY BEE CAFE

The only Exclusive Cafe in Severance

## BANK OF SEVERANCE

Severance, Kansas



COMMENCED BUSINESS, AUGUST 5, 1892

Capital	\$15,000
Surplus	34,000
Total	\$49,000

## THE STORE OF QUALITY

THIS STORE ALWAYS CARRIES  
THE HIGHEST GRADE GOODS  
THAT CAN BE BOUGHT

## LYONS' CASH STORE

Monday Night, February 27th

I. O. O. F. HALL

2-ACT COMEDY

"Ephraim Stebbins Pride"

Presented by High-Life Staff

Admission - - 25c and 35c

## GRAIN, COAL, FLOUR, FEED

For the best service, fair treatment and the highest price for your grain, come to

THE A. J. ELEVATOR COMPANY

L. A. MOORE, Manager

SEVERANCE, KANSAS

## GO TO BONE-McLUCAS LUMBER CO.

For everything to build with; everything to repair with; everything to paint with, and everything to burn. We can satisfy you on price and quality.

# Bone-McLucas Lumber Co.

W. S. HAMILTON, Manager



## First "All County Five" Offered.

Picking an all county team is a hazardous business. Each coach has his own ideas as to the ideal players. It is of course easy to pick a combination that would beat the remaining possible, under most any conditions. But to pick the best possible combination is a difficult proposition. Probably the man most feared as an opponent and most conceited as an ally is Riffer, captain of the Severance squad. Though usually under a two man opposition Riffer is leading the league in scoring. He plays a heady consistent game, commits few fouls, and keeps his men playing all the time. His work has been an outstanding feature of Severance play and a considerable factor in determining the championship. For these reasons he has been chosen as captain of the mythical five but his position changed to that of guard.

The League is especially favored with forwards this season. Sherman of Leona and Burke of Denton are the hardest men in the league to stop. Their certainty on the free throw and their aggressive follow-up shooting give them the edge on any of the rest. They have my unanimous vote for their positions.

With a scoring combination as suggested by the three aforementioned the center position should be given to a man certain of the "tip" and able on defense. Ultzen of Leona fills the bill. He plays a clean fast game, probably making more improvement than any man in the league during the past season.

The guarding situation is different. we have no guards capable of stopping the mighty onslaught on the basket the above combination might make. For the remaining position. Severance of-

fers two candidates Prawl and Moyer. Leona might possibly advance the Benfers; Denton will holler for a place for Cecil. Elwood might want a place for Foster and White Cloud will hold out for Taylor. Since Riffer has been chosen for one defense corner, Moyer would probably work in better than any of the others. His clean play gives him the edge on C. Denton. Severance has never scored less than thirty-five points in any game (Leona game excepted) and our opponents have never touched thirty-five. This argues well for the Severance defense of which Riffer has played an important part. Moyer then is elected.

Just what this combination would do in a real contest is hard to say, but it would look pretty good on the floor: Riffer, Moyer, Ultzen, Sherman and Burke. It would be mighty hard to step them.

For second team, Dye, Joyce, C. Denton, and the Benfers would make a nice combination. Lyons and Chaney would probably be as strong a combination as the Benfers but not as easy to say. Somehow a brother combination always sounds good. Prawl would work well in C. Denton's position. The fact that he has twice this season outplayed him being a strong argument.

What's the use of picking, your idea and mine may not at all coincide and the argument follows. We all indulge in idle speculation.—Mickel.

Sickness has claimed many of the students during the past three weeks. Our business managers, C. I. Moyer, was threatened with pneumonia the first part of this week. Alce Mosier had a bad cold for several days. Albert Shay had an ear ache. Capt. Renard Riffer had a cold last week and Clara Hardy has the chicken pox.

## BOX SOCIAL TROY HIGH SCHOOL FRIDAY NIGHT

WE HAVE the very best line of box candies and candy bars on the market. Also, Eskimo Pie, a candy bar a la mode, for 10c. Ice cream in stock every day, at the

## BUSY BEE CAFE

The only Exclusive Cafe in Severance

## BANK OF SEVERANCE

Severance, Kansas



COMMENCED BUSINESS, AUGUST 5, 1892

Capital	\$15,000
Surplus	34,000
Total	\$49,000

## THE STORE OF QUALITY

THIS STORE ALWAYS CARRIES  
THE HIGHEST GRADE GOODS  
THAT CAN BE BOUGHT

## LYONS' CASH STORE

Monday Night, February 27th

I. O. O. F. HALL

2-ACT COMEDY

"Ephraim Stebbins Pride"

Presented by High-Life Staff

Admission - - 25c and 35c

## GRAIN, COAL, FLOUR, FEED

For the best service, fair treatment and the highest price for your grain, come to

THE A. J. ELEVATOR COMPANY

L. A. MOORE, Manager

SEVERANCE, KANSAS

GO TO BONE-McLUCAS LUMBER CO.

For everything to build with; everything to repair with; everything to paint with, and everything to burn. We can satisfy you on price and quality.

Bone-McLucas Lumber Co.

W. S. HAMILTON, Manager





Severance H.S. old Bldg.

What year? What Grade?

1st row left to right

Third Row,

Laurence Foster  
Edna Martin  
Edna Miller  
Zetta Roland  
Anna Thomas  
Rachel Boyd  
Bert Prawl

Anna Hutt  
\* Grace Prawl  
Ruth Courtin  
Reada Baker  
Myrtle Bahr Roberts  
Lawrence Bahr  
Ray Hildersheere

Second row:

Fourth Row

Harold Ward  
Mary Sharp (Rainwater)  
Annalene Ebner  
Lucille ?  
Lesley Hall  
Louis Hall  
Richard ?

- - - - ?

Marguerete Miller  
Carl Andrus  
? Teri Hildweir ?  
Ella Hutt  
Nancy ? Cornillius  
Charles Chuck  
Ches Hutt  
Miss Cora Howe





Edith Hargis  
 Bertha Hargis  
 Ruth Lowe  
 Joe Boyd  
 Louise Meecke  
 Elsie Prawl  
 Ernest Andrus.  
~~Arthur Lowe~~  
 James Vanbeber.

CORRESPONDENCE HERE

Elsie Prawl

Elks 4-5th grade

Ruby Goiens

Edith Lowe

Myrtle Downing

Carl Hall

William Neal

Laural Vanbeber  
eber.

William Courtin

Frank Courtin

Marion Dawson

Minnie Black

Julia Black

Myrtle Caudle

Minnie Courtin

Louise

Mary Gray

Flavel Terry

Blanche Terry

Harold Riffer

John Prawl

George Miller

Willie Lancaster

Tom Springer

George Beard

Herbert Davis

Tom Ebner

Rue Long

Dec. 12, 1910.

Dec. 12, 1910

A A E O A  
 A PLACE A  
 STAMP  
 HERE  
 A A E O A

NAME AND ADDRESS HERE

John B. Gray.

Teachers.