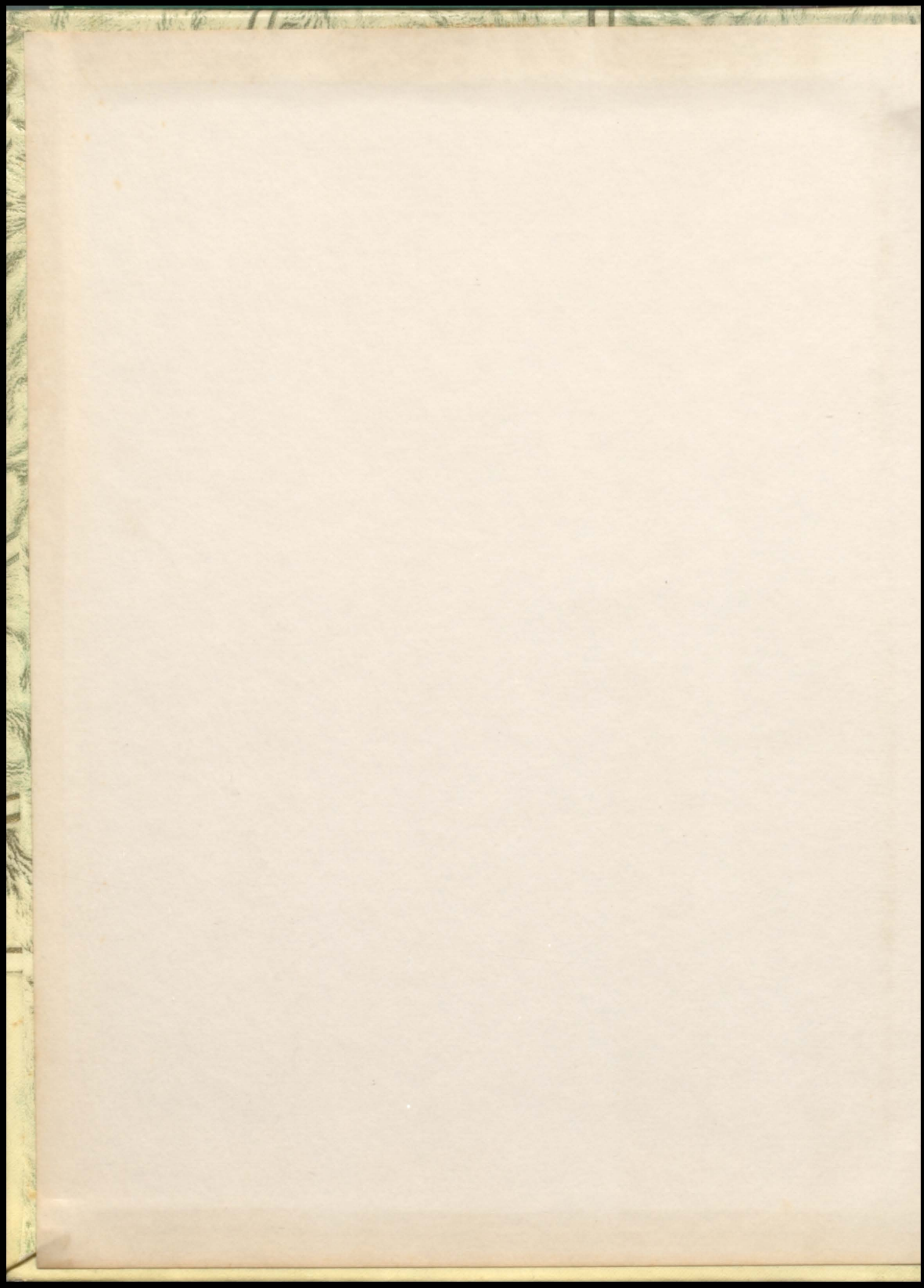
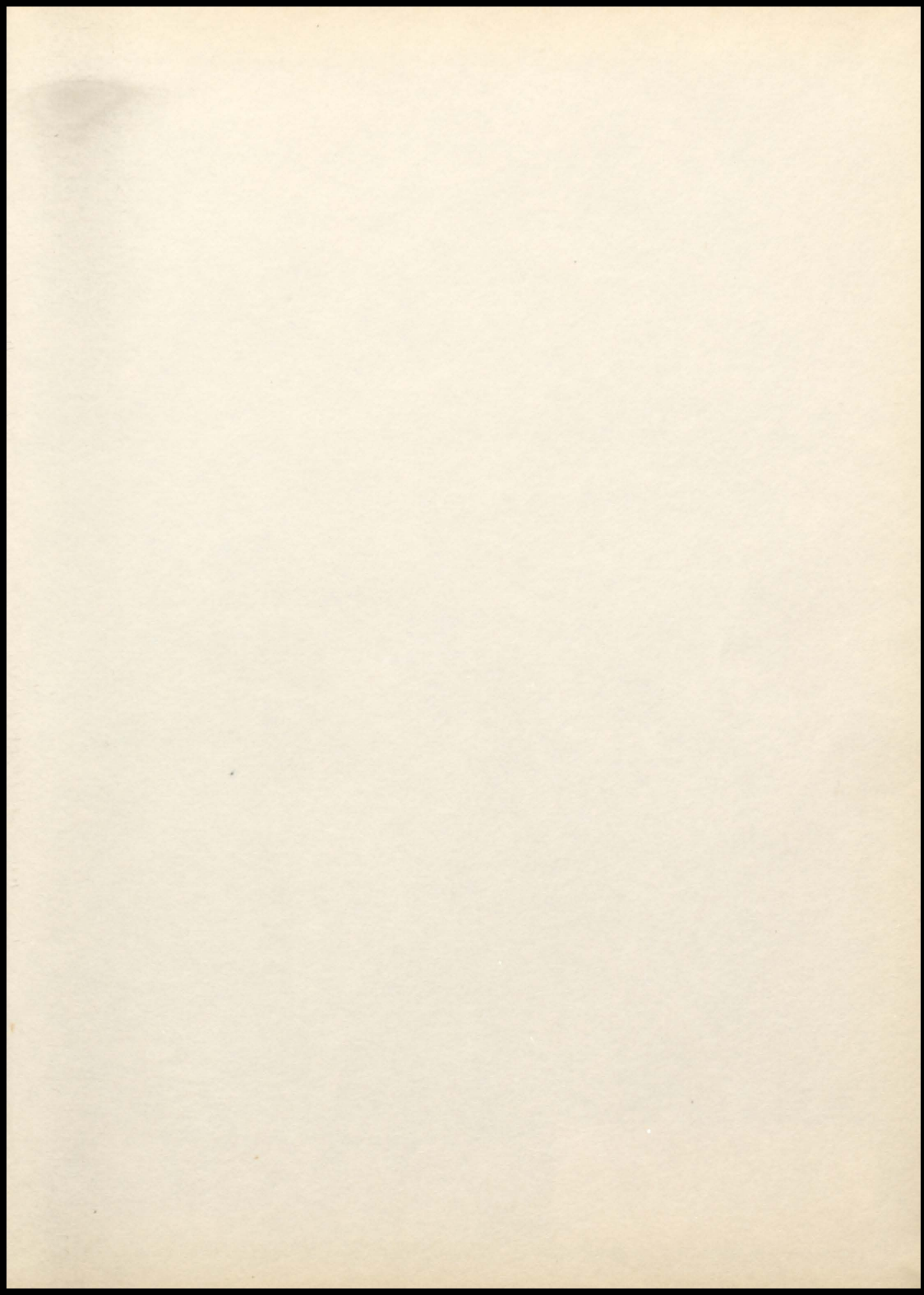
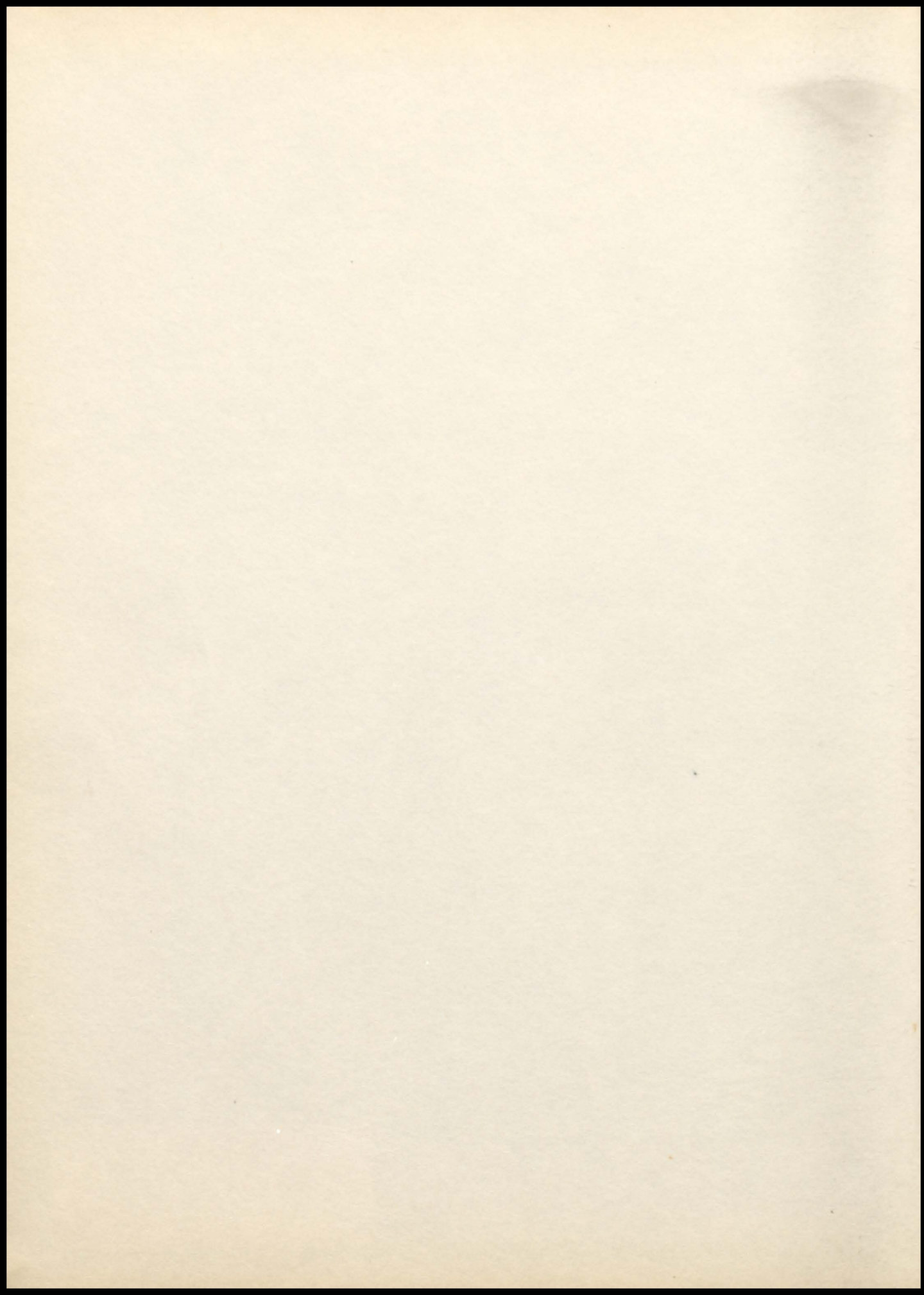


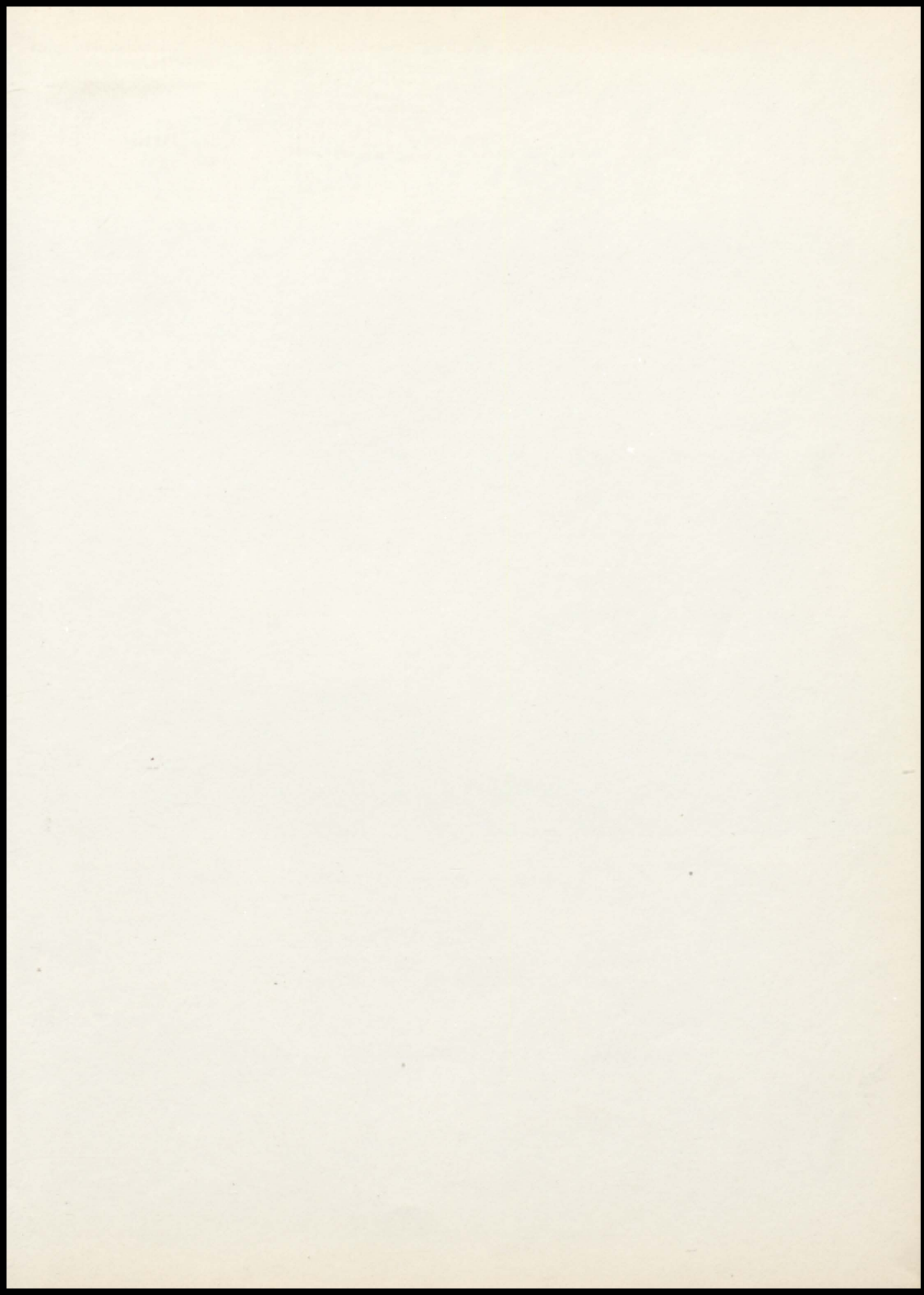


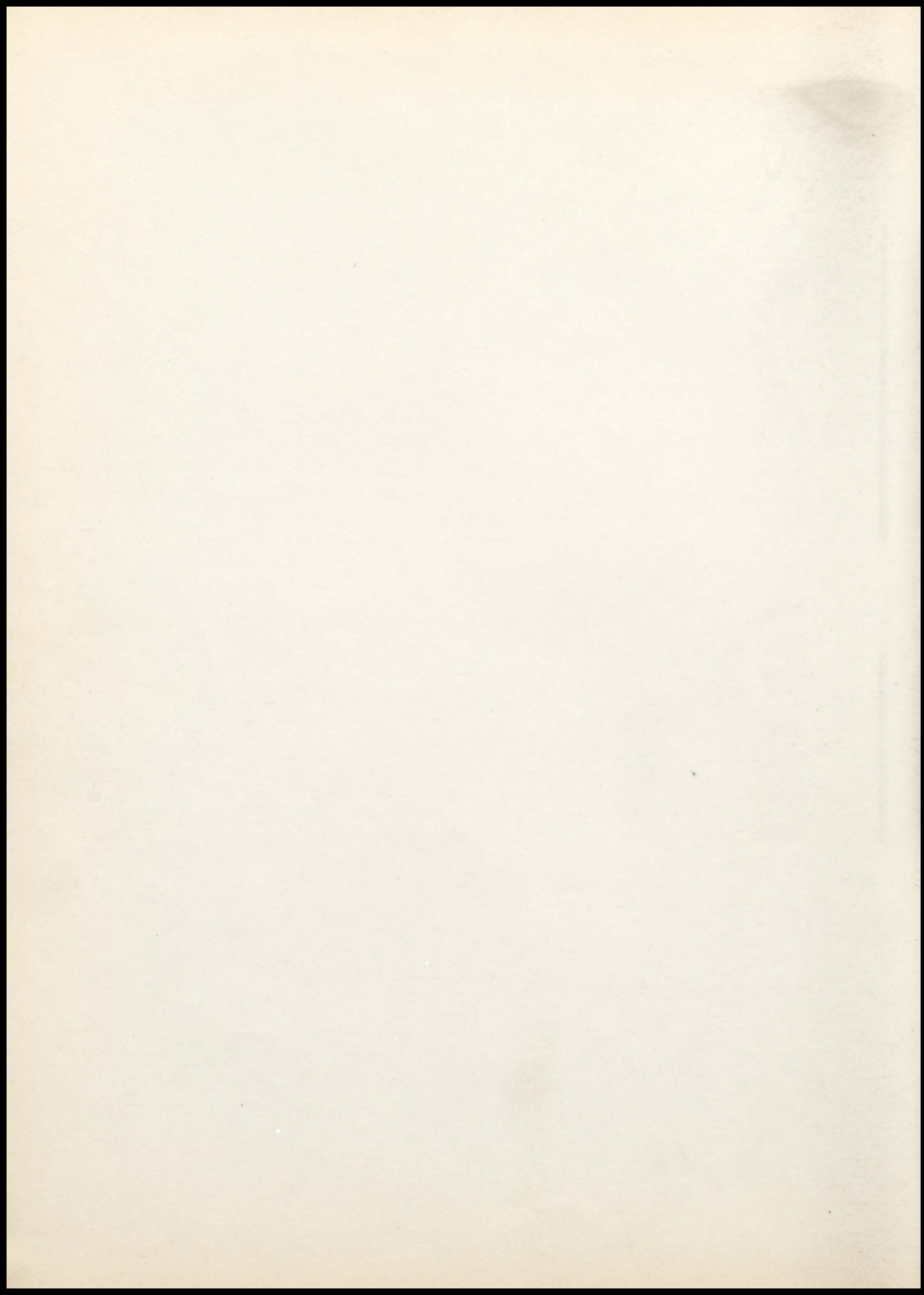
Trojan 53



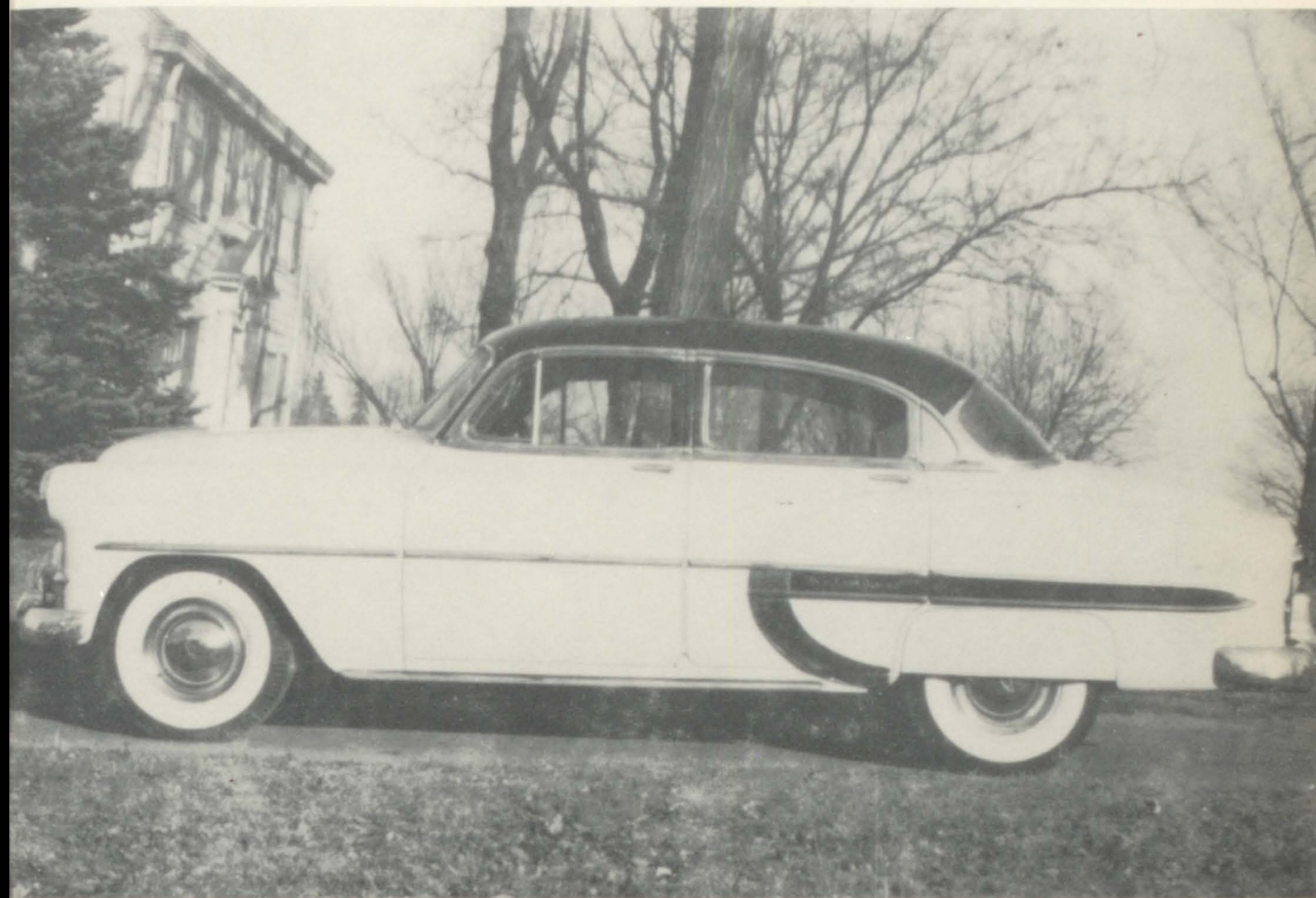








Congratulations
Class of 1953



1953 CHEVROLET "BEL AIR" 4-DOOR SEDAN

1953 CHEVROLET "BEL AIR" 4-DOOR SEDAN
New cars-New Trucks Used Cars-Used Trucks
"SERVICE FOR ALL AUTOMOBILES AND TRUCKS"

Brown Chevrolet Company

BIG CAR QUALITY AT LOWEST COST
Telephone 260 Troy, Kansas

School Building



Here is a picture record of your 1952-53 school year; your friends, class rooms where you labored, social events and sports where you had your good times.

May you treasure your T.H.S. memories.

Our Story

1953



THE TROJAN
TROY RURAL HIGH SCHOOL
Troy, Kansas

Dedication



We, the class of 1953 dedicate this annual to our parents, who have guided us, thus far, through our school years.

To those who have shared our joys and sorrows, rejoiced with us in our times of triumph, and comforted us during discouragements and defeats, we offer our thanks.

To them go the credit for what we have achieved. May we prove worthy of their faith and devotion.

Compliments of
FARM SUPPLY
St. Joseph, Missouri

The Trojan and Trumpet Staff



THE TROJAN STAFF

Editor-in-Chief- - - - - BETTY CLARY
 Copy Editor- - - - - JUDITH WILLIAMS
 Business Manager- - - - - FLORENCE FORD
 Make-up Editor- - - - - ELIZABETH WARREN
 Advertising Manager- - - - - JOHN BRACKEN
 Assistant Advertising Manager- - - - - JERRY THOMAS
 Circulation Manager- - - - - BOB HANLAN
 Sports Editor- - - - - WAYNE MARTIN
 Photography- - - - - RONALD ASHWORTH
 Snapshots- - - - - TEDDY CAMPBELL

THE TRUMPET STAFF

Co Editors- - - JUDITH WILLIAMS, ELIZABETH WARREN
 Business Manager- - - - - FLORENCE FORD
 Assistant Business Manager-Art Editor- - - - - BETTY CLARY
 News-Gossip Editor- - - - - WAYNE MARTIN
 Editorials- - - - - TEDDY CAMPBELL
 Feature Editor- - - - - JOHN BRACKEN
 Calendar Editor- - - - - RONALD ASHWORTH
 Sports Editors- - - - - JERRY THOMAS, BOB HANLAN

Faculty Advisor: MRS. ELLEN WARREN

These industrious students are considered one of the busiest groups in school. Beside their regular classwork, they are responsible for the Trojan Trumpet, published every two weeks, and proudly present this 1953 annual.

Message From Our Principal

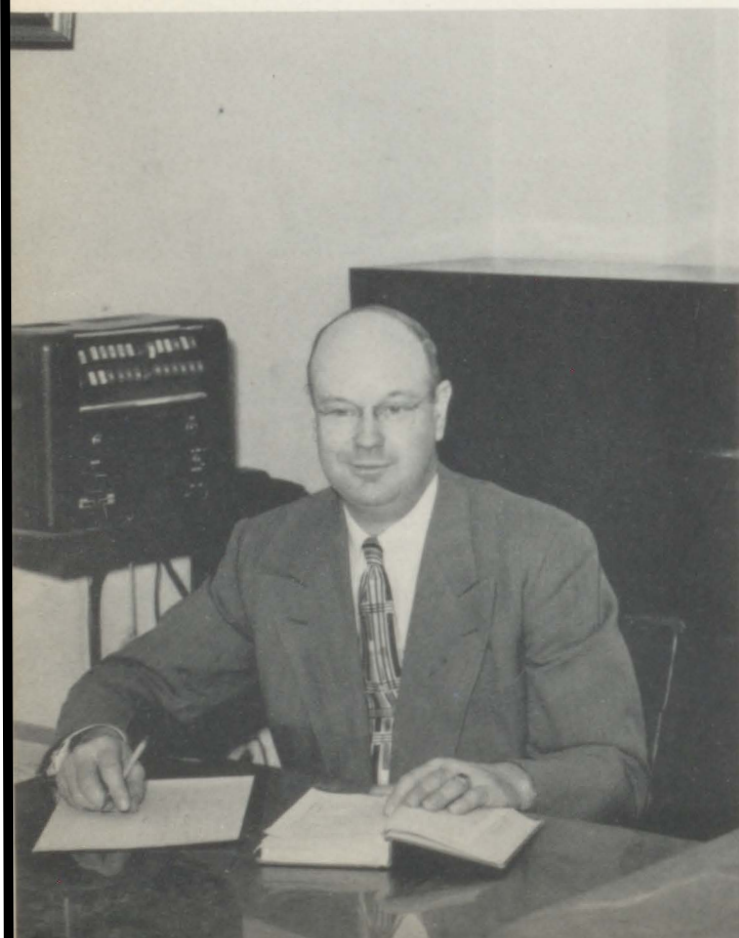
I wish to express my sincere appreciation to the TROJAN staff for a very fine publication.

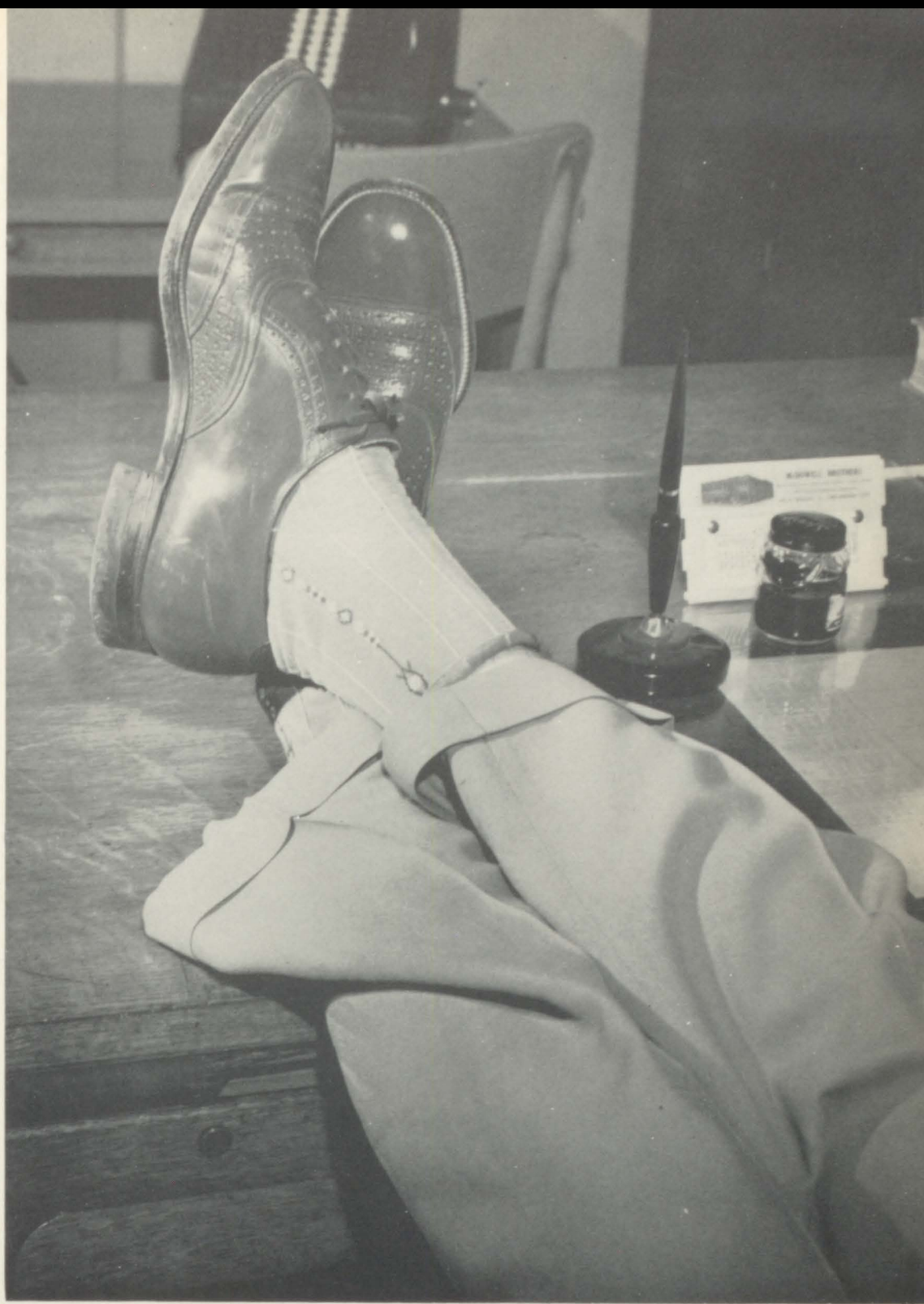
This fine record of school activities and achievements indicates that the student body has a sense of pride and interest in their school. The TROJAN rightly deserves much credit for the contribution it makes to the interest in student activities.

The covers of this book will hold dear to you and your children the many pleasant associations and experiences you, your classmates and friends have enjoyed while in school.

It is a privilege to commend each and every one who has made a contribution to the production of this book.

C. W. Trogdon





Faculty



WALTER CROUCH
 B. S. Kansas State Teachers
 Emporia, Kansas
 Assistant Coach
 Junior Sponsor
 Social Science

ELLEN M. WARREN
 B. S. Kansas State
 Spanish Journalism
 Journalism Sponsor



Faculty



ERVIN KIMBLE
 B. S. Kansas
 Wesleyan
 Industrial Arts
 Physical Education
 Coach



ANTHONY KIMMI
 B. S. Kansas State
 Music
 Freshmen Sponsor

ANNA M. GOSS
 B. S. Kansas State
 Home Economics
 Junior Sponsor

COMPLIMENTS OF
 TROY GRAIN
 and
 FUEL

FREDRICK GAMPPER
B. S. St. Benedict's
M. A. University of Kansas City
Science



BARBARA SINCLAIR
B. S. Missouri State
Teachers, Kirksville, Mo.
English
Senior Sponsor

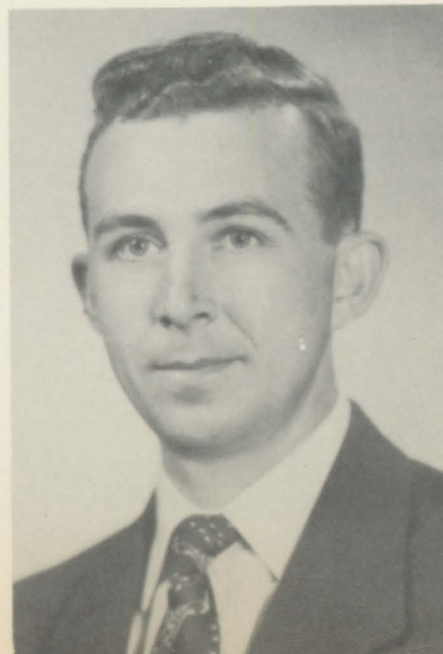


FLORENCE RHUDY
B. A. Kansas University
Mathematics



COMPLIMENTS OF
SPARKS GROCERY

CHARLES KUENZI
B. S. Missouri University
Vocational Agriculture
FFA Sponsor
Sophomore Sponsor



CLARA BELLE KANOY
B. S. Central
Missouri State
M. A. Colorado State
College of Education
Commerce.



1. Barbara Mooney 2. Delus Ricklefs 3. Pep Club girls after giving football boys a rousing send off to game. 4. An interesting book and Jean Studer. 5. Del Ricklefs takes a swig of cider at F.F.A. Barn-warming while others look on. 6. Barb Mooney, Shirley Knapp, and Mary Noyes caught by roving photographer. 7. Our janitors John Thorton and Ham Kent. 8. Judy Williams dons hat as joke after eighth grade graduation. 9. Nileeta Sharp, Opal Hollars, and Marie Ruhnke enjoy an after school "tete-a-tete." 10. Donna Horner and Allen Johnson in one of the lighter moments of physics class. 11. Judy Williams and Johnny Bracken pose for picture during senior trip to American Royal. 12. F.F.A. Sweetheart--Donna Horner.





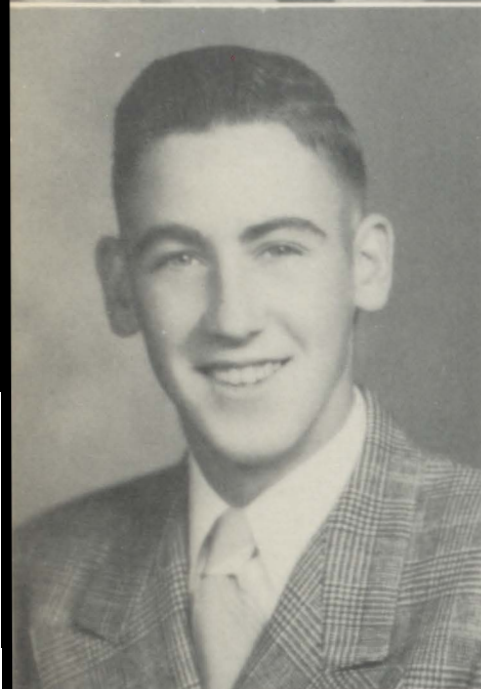
Seniors [☆]

Seniors



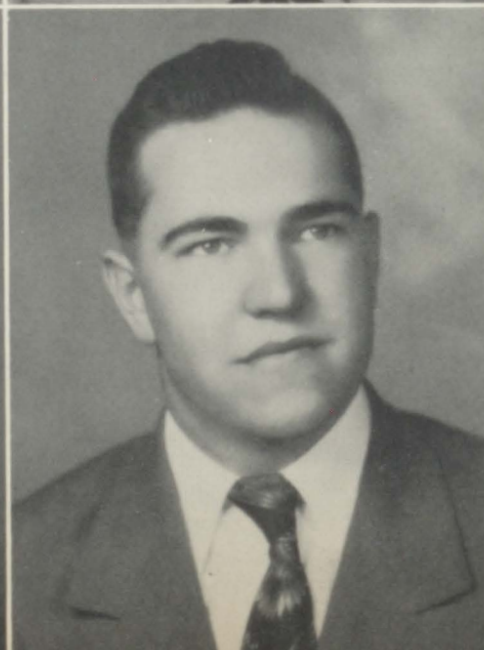
RONALD ASHWORTH
Highland High 1; Football 3, 4;
Basketball 3; Track 1, 2, 3; T-
Club 2, 3, 4; FFA 2, 3, 4; FFA
Treasurer 3; T-Club President
4; Trumpet and Trojan Staff 4;
Mixed Chorus, 3, 4; FFA Sec-
retary 2; Glee Club 1, 2, 3, 4.

HALLIE SIMPSON
Pep Club 3, 4; Glee Club 1, 2, 3,
4; Mixed Chorus 1, 2, 3, 4; Class
Play 3.



JOHNNY BRACKEN
Football 2, 3, 4; Basketball 2, 3;
T-Club 1, 2, 3, 4, Secretary-
Treasurer 4; Student Council 3;
Trumpet and Trojan Staff 4.

SHIRLEY SHARP
Glee Club 1, 2, 3, 4; Mixed Chorus
2, 3, 4; Class Play 3.



VERA BRENNER
Pep Club 4; Glee Club 1, 2, 3, 4;
Mixed Chorus 3, 4.

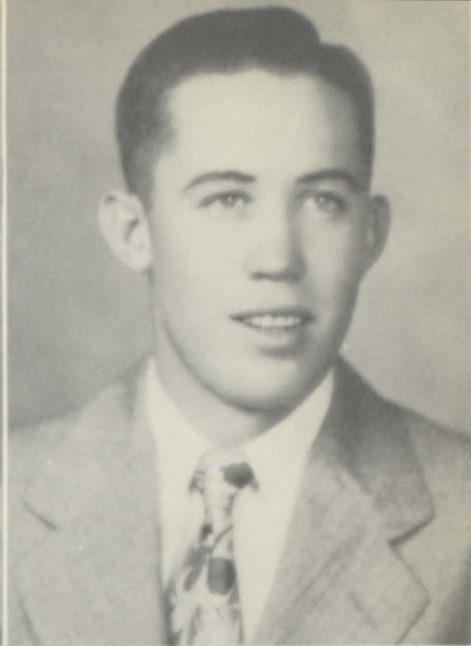
HAYDEN ELDER
Bendena 1, 2; Football 3, 4;
Basketball 3, 4; Track 3; Glee
Club 3, 4; Mixed Chorus 3, 4;
T-Club 4; FFA 3, 4, FFA
President 4; Student Council
President 4; Class President 4;
Class Play 3; Boy's Quartet 4.

Compliments of
DeMONEY BROTHERS

Seniors

DONNA HORNER

Glee Club 2, 3, 4; Pep Club 1, 2, 3, 4; Secretary Pep Club 4; Student Council 2; Class Secretary-Treasurer 3; Cheerleader 3, 4; Carnival Queen 2; FFA Sweetheart, 4; Band 2, 3, 4; Mixed Chorus 4.



ROBERT HANLAN

Football 1, 2, 3, 4; Basketball 1, 2, 3, 4; Track 2, 3; T-Club 1, 2, 3, 4; Vice President T-Club 4; Trumpet and Trojan Staff 4; Co-Captain Football 4.



BILLY JOE BULLOCK

Bendena High 1, 2; Football 4; Basketball 3, 4; Track 3; Band 3; FFA 3, 4; T-Club 4.

FLORENCE FORD

Glee Club 2; Pep Club 1, 2, 3, 4; Band 2, 3, 4; Pep Club Treasurer 4; Cheerleader 4; Trumpet and Trojan Staff 4; Class Play 3.

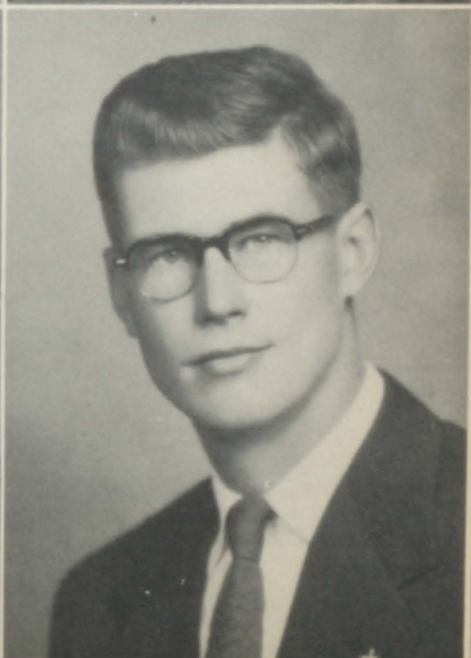
ANN FOLSCHE

Glee Club 2, 3, 4; Pep Club 2, 3, 4; Band 1, 2, 3, 4; Clarinet Quartet 2, 3, 4; Class Play 3; Class Secretary-Treasurer 4; Mixed Chorus 4.



DELUS RICKLEFS

Bendena 1, 2; Football 4; Basketball 3, 4; Track 3; Band 3; Glee Club 4; FFA 3, 4; Vice President FFA 4; T-Club 4.



Compliments of
STRATHMANN
STUDIO

Seniors

WAYNE MARTIN

Football 2, 3, 4; Basketball 1, 2, 3, 4; Track 1, 3; T-Club 1, 2, 3, 4; Class President 2; Trumpet and Trojan Staff 4.

BETTY CLARY

Glee Club 1, 2, 3, 4; Pep Club 1, 2, 3; Cheerleader 2, 3; Band 1, 2, 3; Trio 3, 4; Double Sextet 3, 4; Class Play 3; Editor Annual 4; Class Reporter 3; Mixed Chorus 1, 2, 3, 4; Assembly Comm. 1; Trumpet and Trojan Staff 4.

FLOEY CLARY

Glee Club 2, 3, 4; Pep Club 3, 4; Mixed Chorus 4.

RONALD CLARY

Football 3, 4; Basketball 3; T-Club 3, 4; Class Play 3.

FLOYD FITZGERALD

FFA 2, 3, 4; FFA Sentinel 3.

BONNIE SAVAGE

Glee Club 1, 2.

Compliments of
STRATHMANN
STUDIO

Seniors

JERRY THOMAS

Football 1, 2, 3, 4; Basketball 1, 2, 3, 4; Track 2, 3; T-Club 1, 2, 3, 4; Business Manager T-Club 4; Class Secretary 2; Co-Captain Football 4; Trumpet and Trojan Staff.



BETTY SHARP

DALE SHARP

FFA 2, 3, 4; Secretary FFA 4.



Compliments of
WINZER HARDWARE

JIMMY GILMORE

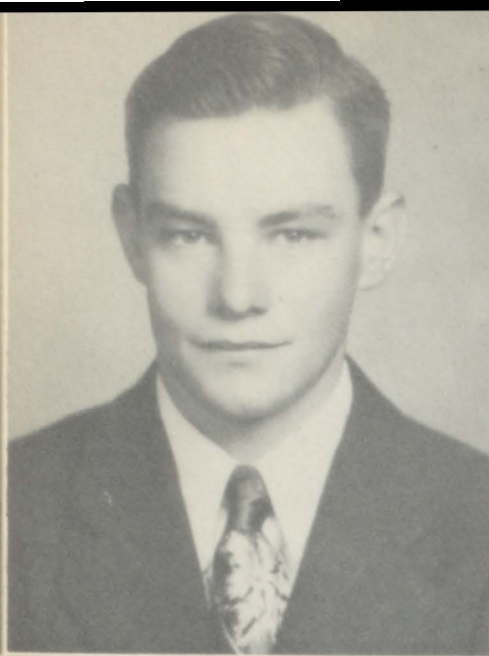
Football 1, 2, 3, 4; Basketball 1, 2, 3, 4; Track 1, 3, 4; Glee Club 3, 4; Mixed Chorus 3, 4; T-Club 2, 3, 4; FFA 2, 3, 4; FFA Reporter 3; Band 1, 2.



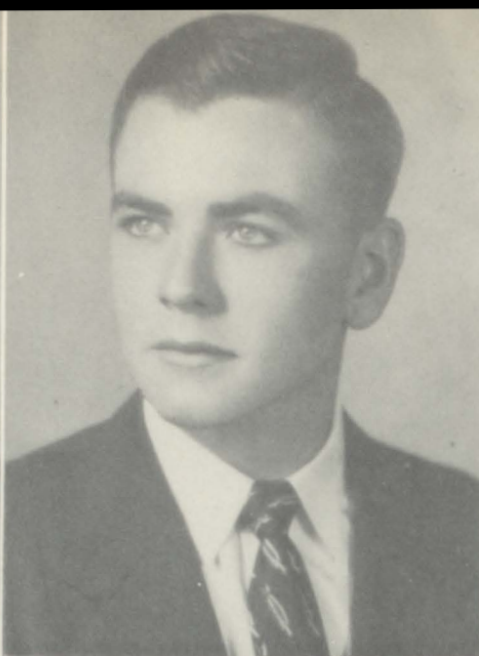
ELIZABETH WARREN

Glee Club 1, 2, 3, 4; Mixed Chorus 1, 2, 3, 4; Brass Sextet 2, 3, 4; Band 1, 2, 3, 4; Trio 4; National Honor Society 3, 4; Pep Club 1, 2, 3, 4; Class President 3; Class Reporter 4; Homecoming Queen 4; Class Play 3; CO-Editor of Paper 4; Trojan Staff 2, 4; Girls State 3.

Seniors



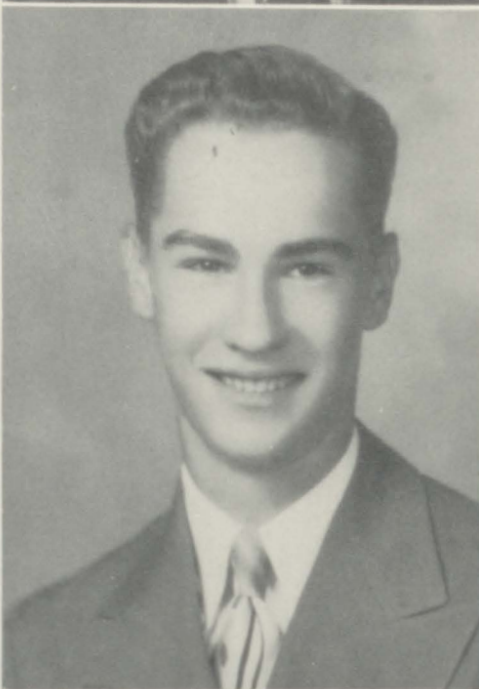
LEROY SHARP
FFA 2, 3, 4.



THOMAS CHAPPLE
Football 3, 4; FFA 2, 3, 4; FFA
Vice President 3.



PATTY MILLER
Pep Club 3.



TEDDY CAMPBELL
Helena Mo. High, half 1;
Glee Club 1, 2; Band 1, 2,
3, 4; Brass Sextet 3, 4; Class
Treasurer 2; Class Play 3;
Trumpet and Trojan Staff 4.



JERRY DUBACH
FFA 2, 3.



JUDITH WILLIAMS
Bendena High 1; Glee Club
2, 3, 4; Mixed Chorus, 2, 3,
4; Double Sextet 3, 4; Sextet
2, 3; Trio 4; Band 2, 4; Pep
Club 2, 3, 4; President Pep
Club 4; Class Vice President
3; Student Council 4; Secretary
Student Council; Cheerleader
2, 3, 4; Carnival Queen 3;
Homecoming Attendent 2, 3;
National Honor Society 3, 4;
Class Play 3; Co-Editor;
Trumpet and Trojan Staff.

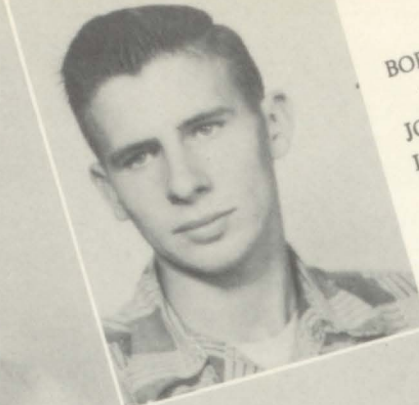
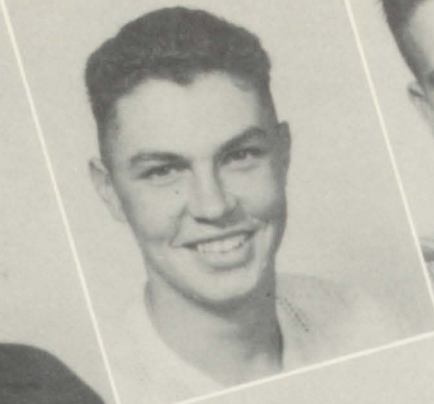
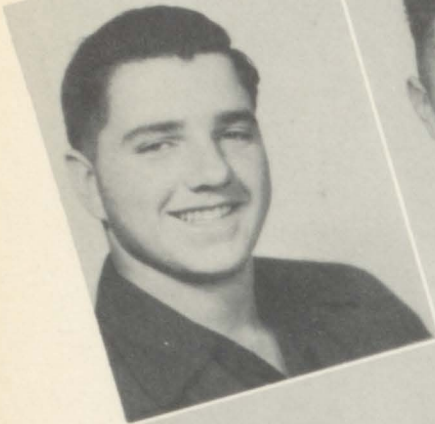
Compliments of
BOB REEDER



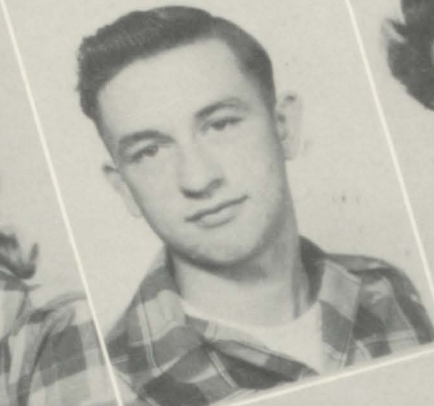
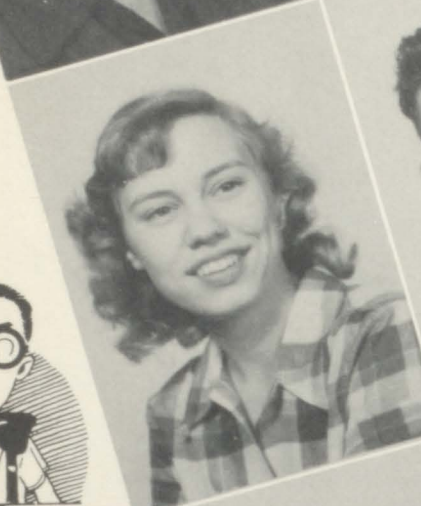
Juniors[☆]

Juniors

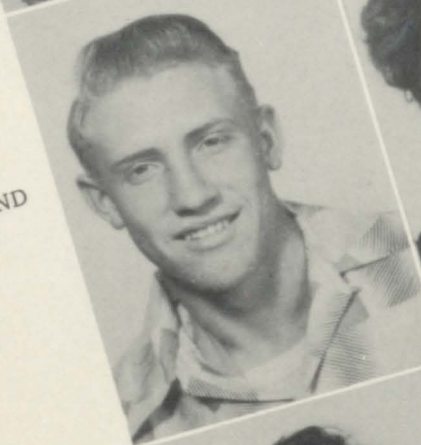
BOBBY JACK BENN
Student Council
JON BURKHART
IVAN CLARK



PHYLLIS CLARY
BILLY FRANKEN
SARAH FULLER



CLARENCE HOWLAND
Vice President
JOAN ISRAEL
ALAN JOHNSON



SHIRLEY KNAPP
Reporter
BEVERLY KING
BARBARA MOONEY



Juniors

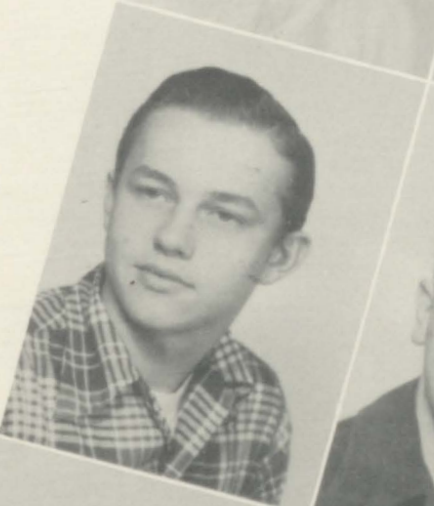
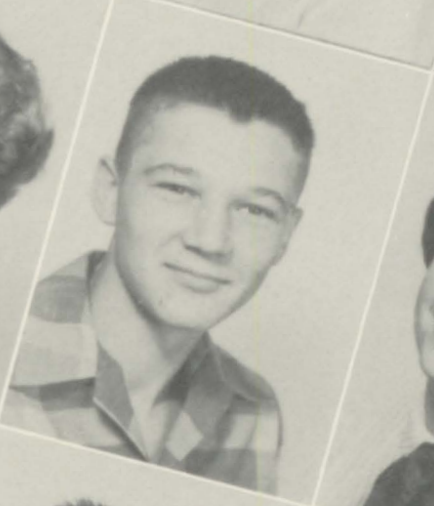
OPAL NORRIS
MARY NOYES
President



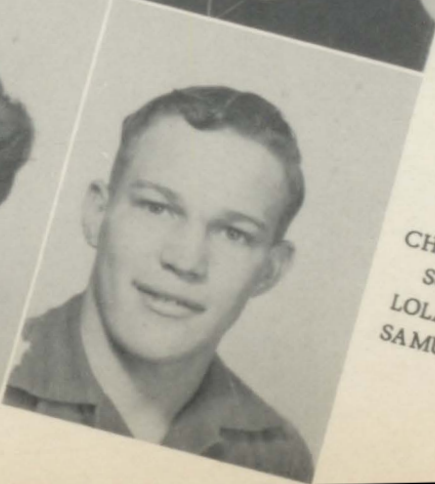
PHOTO NOT AVAILABLE



NAOMI REDER
CHARLES RODGERS
JANIS RAMSEY



MARION ROBERTON
BUDDY SCHOENFELDER
JEAN STUDER



CHARLES SMITH
Secretary- Treasurer
LOLA SMITH
SAMUEL WARREN



Front row: left to right: C. W. Trogden, Principal; B. Benn, Student Manager; E. W. Kimble, Coach.

Back row: left to right: B. Horner, H. Elder, J. Speaks, J. Burkhart, J. Gilmer, D. Ricklejs, J. Bullock, B. Harlan, C. Houland, J. Thomas.

TROY HIGH SCHOOL
Troy, Kansas

The 1953 basketball squad has won five trophies this year. After winning first place in the district tournament, they went to Onaga to win third in the regionals held there, March 10, 11, 12, 13. With Horton, they were co-champions of the Big Five, which also included Sabetha, Hiawatha, and Effingham. The second place trophy was won in the county tournament, and the Troy Boosters Club awarded a trophy for being undefeated on their home court.



1. Baby Jim Gilmore 2. A happy party group, 3. Judy, Hayden, and Liz keeping warm? 4. Shirley, Judy, Donna, and Florence pep up homecoming parade. 5. Pep Club float in homecoming parade. 6. Delus Ricklefs and horse, Judy. 7. Senior girls when they were taking Home Ec. 1. 8. Mrs. Goss reads hot lunch list. 9. Mrs. Sinclair enjoying comfort of new stage furniture. 10. Barbara Mooney and Hayden Elder celebrate birthdays at a party. 11. Bob Hanlan makes one of his famous shots.



Sophomores



Sophomores

Sponsored by
TROY SMOKE HOUSE



Le Roy Nocks, Vice President
Daniel Mullins
Rosan Manyon
Georgia Lewis



Shirley Ragan
Marie Ruhnke
Jerry Puckett
Arthur Newton



Donald Sharp
Nileeta Sharp
Joe Scott
Patty Schoenfelder



Shirley Williams
Mary Leah Ward
Vernon Timmons
Phyllis Snodgrass



Shirley Zeltwanger
Margaret Whetstine
Jeneane Wade
Jenette Wade

Sponsored by
SINCLAIR PHARMACY

Sophomores



Janice Albers
Larry Barnthson
Henry Bibbs



Merle Lee Corf
Nicholas Dannevik
Richard Folsche
Dan Foley



Shirley Gardner
Kathleen Gibson
Eugene Gibson
Robert Guy, President



Marion Hollars
Opal Hollars, Student Council
Donald Harter
William Horner

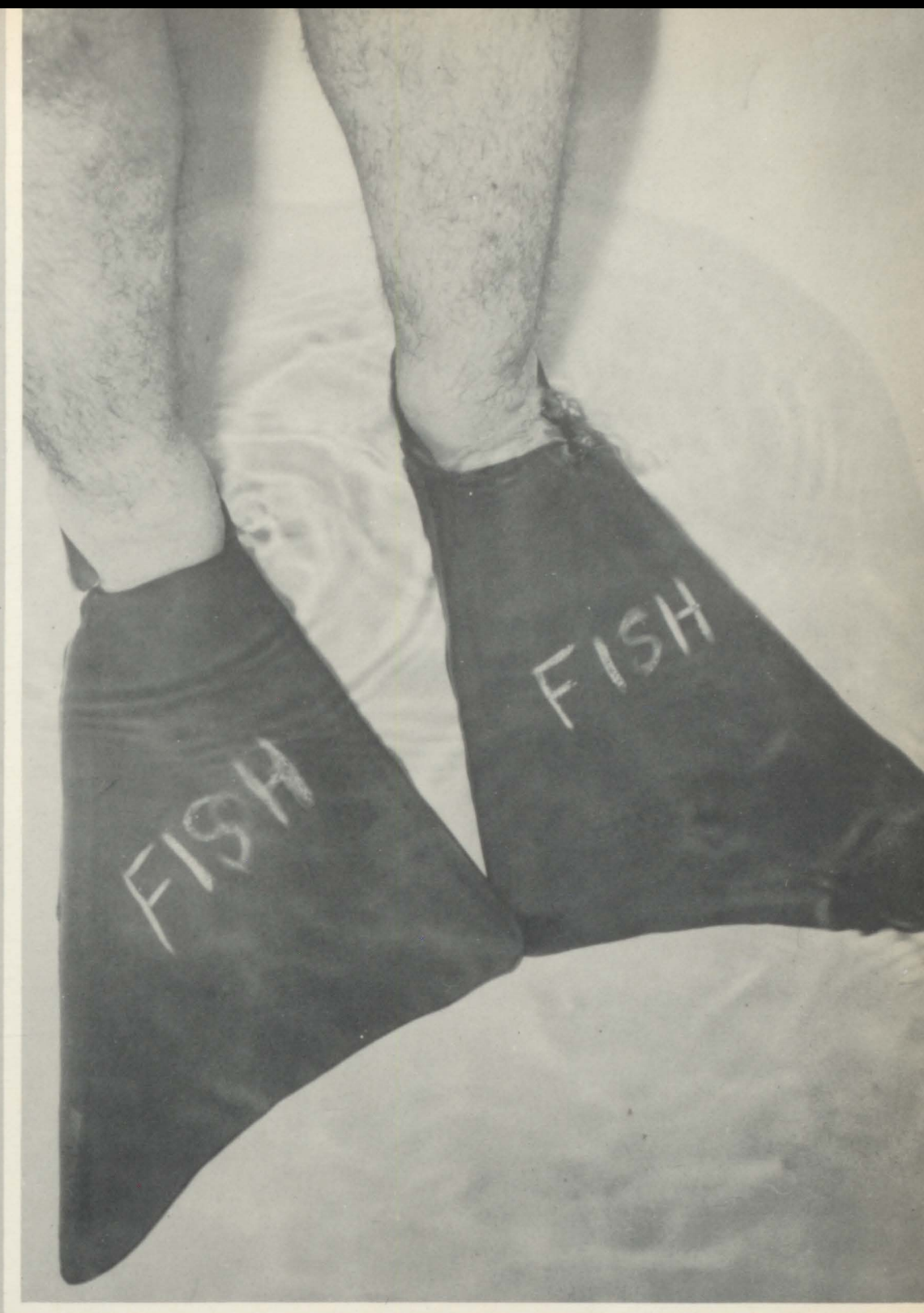


Dale Harness, Reporter
Mary Howland
Waller L. Koehler
Charles M. Jasper





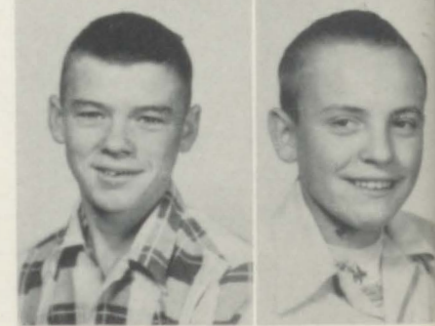
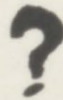
1. Queen Elizabeth Warren at a thrilling moment. 2. Judy Williams strikes a pose? 3. Floey Clary, Donna Horner, Sarah Fuller, Cecelia Lichliter serve at Home Coming Dance. 4. A noon hour hen party. 5. Hayden Elder boosting work of the Federalist Party. 6. Florence Ford stops long enough for a snap. 7. Pals all the way, Ann Folsche and Donna Horner. 8. "Oh no!" says Mrs. Sinclair, Mrs. Warren doesn't mind. 9. Federalist Chairman Janice Albers. 10. Home Ec. II serves Mr. Trogdon and other guest breakfast in style. 11. Initiation victims, Darlene Studer, Wanda Smith, Cecelia Lichliter, Carrie Howland, Yvonne Elsie Snoddy, Awanda Dixon. 12. Last bell finds Patricia Miller, Judy Williams, Elizabeth Warren, Florence Ford late again.



Freshmen



Freshmen



First Box: Jack Ainley, President; Susie Ashworth, Bernard Clary, Wilbur Copenhafer.

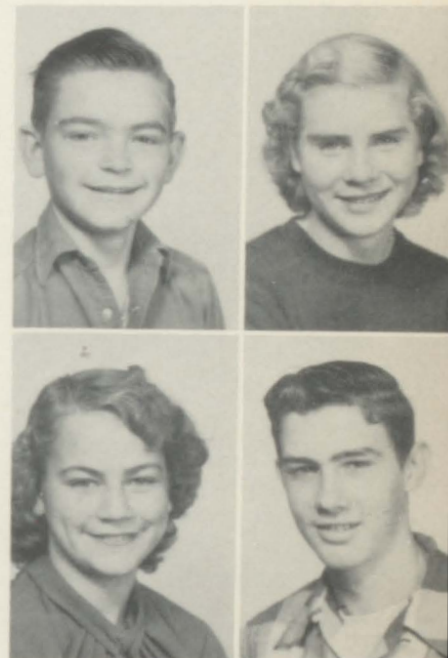
Second Box: Louise Davies, Awanda Dixon, Mary Eastabrooks, Dennis Ford, Reporter.

Third Box: Maple Fuller, Jr., Kay Glasscock, Carrie Lee Howland, Nellie King.

Fourth Box: John Lehman, Cecelia Lichliter, Jerry McKernan, Benny Mayer, Secretary-Treasurer.



Freshmen



First Box: Wilbur Miller, Leo Neuman, Viola Newton, Velma Jean Ruhnke.

Second Box: Edna Mae Schoenfelder, Wallace Schoenfelder, Melvin Sharp, Phyllis June Sharp.

Third Box: Wanda June Smith, Vice President; Elsie Yvonne Snoddy, Johnny Speaks, Darlene Studer, Student Council.

Fourth Box: Roger Sutton, Betty Thornton, Shirley Whetstine, Wayne Wykert, Sponsor; Anthony Kimmi.

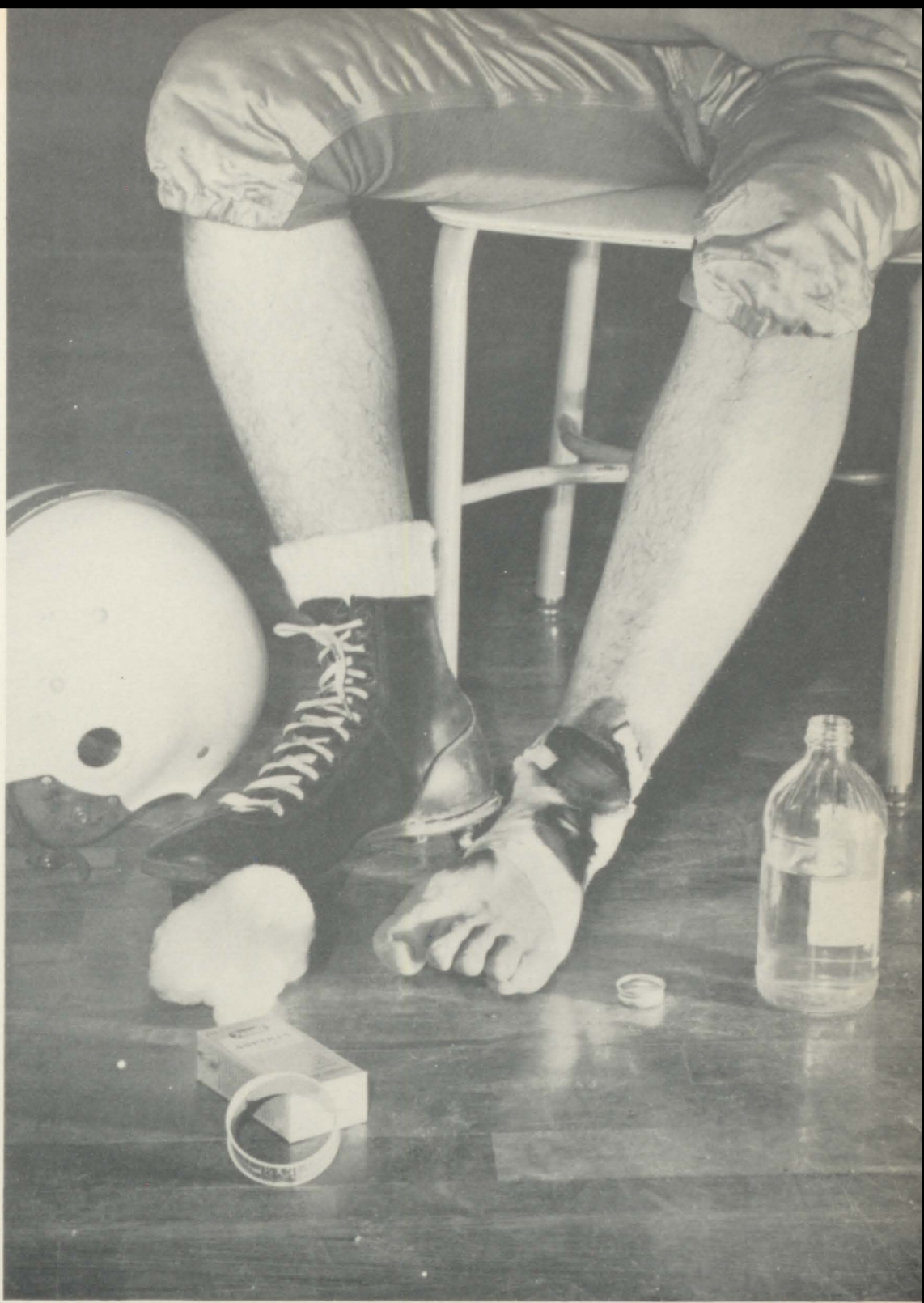


Football Homecoming

Queen ELIZABETH WARREN
and her
Attendants
BARBARA MOONEY and JEAN STUDER

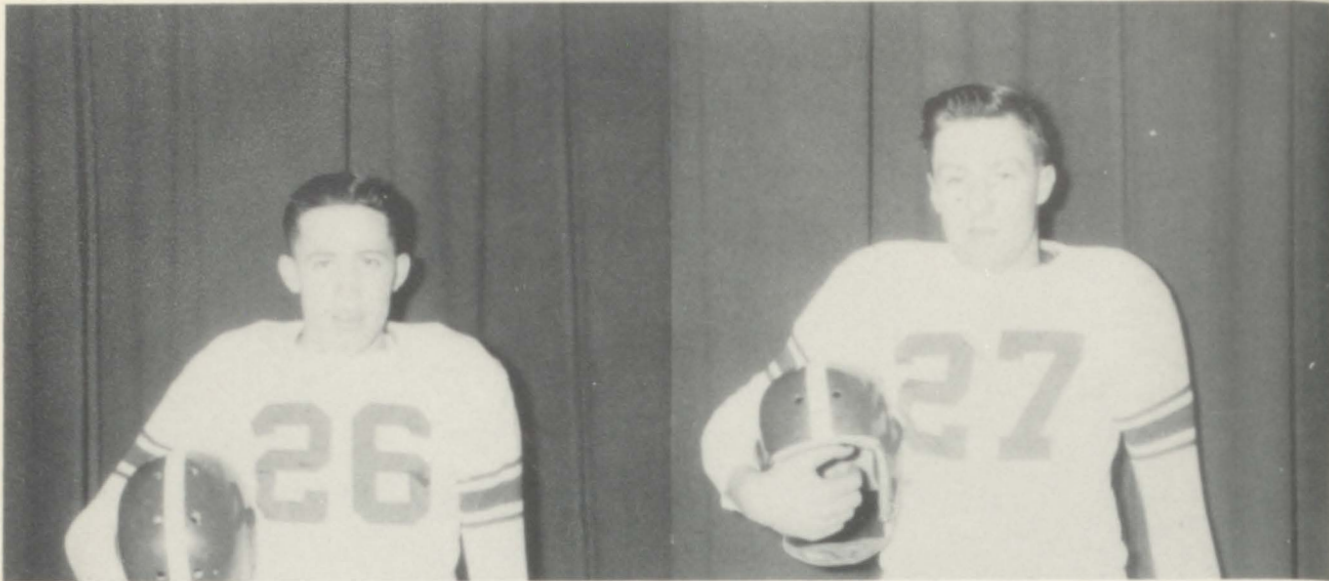
Compliments of BROWN
FRUIT AND COAL COMPANY





Athletics [☆]

Football Co-Captain

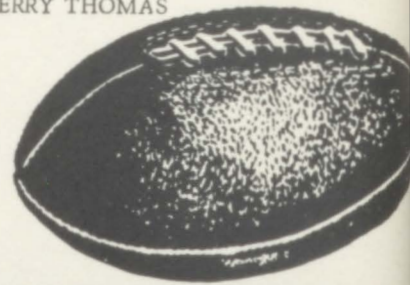


BOB HANLAN

JERRY THOMAS



Sponsored by
WESTERN AUTO.
St. Joseph, Missouri



FOOTBALL SQUAD

First row: left to right: Bob Hanlan, Jim Gilmore, Ronnie Clary, Bob Jack Benn, Sam Warren, Hayden Elder, Arthur Newton.

Second row: Wayne Martin, Charles Rodgers, Johnny Bracken, Clarence Howland, Jerry Thomas, Ronnie Ashworth, LeRoy Nocks.

Third row: Delus Ricklefs, Tom Chapple, Marion Roberton, Richard Folsche, Jack Jasper, Billy Joe Bullock, Jon Burkhart.

Fourth row: E. W. Kimble, Vernon Timmons, John Speaks, Jerry McKernan.



HAYDEN ELDER



BOBBY JACK BENN



CLARENCE HOWLAND



SAM WARREN



Football

SCORES FOR 1953

Troy	46	Powhattan	7
Troy	0	Sabetha	38
Troy	6	Wathena	19
Troy	0	Horton	19
Troy	0	Highland	19
Troy	7	Effingham	34
Troy	6	Hiawatha	6
Troy	0	Fairview	19



WAYNE MARTIN



BOB HANLAN



RONALD ASHWORTH



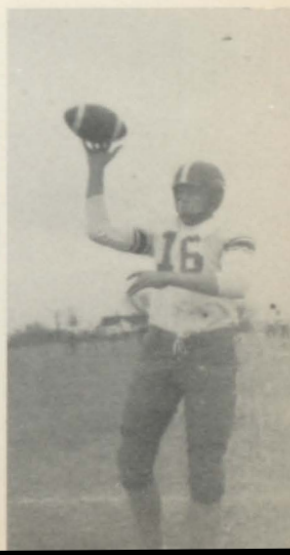
ARTHUR NEWTON



RONALD CLARY



JIM GILMORE



JERRY THOMAS



TROJAN FIRST TEAM: Left to right: Bill Horner, Jerry Thomas, Clarence Howland, Hayden Elder, Bob Hanlan, Jim Gilmore, Billy Joe Bullock, Delus Ricklefs.

COACH E. W. KIMBLE
Trainer Bobby Jack Benn



TROJAN SECOND TEAM: Back: left to right: Jerry McKernan, Bennie Mayer, Nickolas, Dannevick, Vernon Timmons, Wilber Copenhafer. Front: Sam Warren, Jon Burkhardt, Richard Folsche, John Speaks, Leroy Nocks.

Assistant Coach
WALT CROUCH

Compliments of
SEARS ROEBUCK COMPANY
St. Joseph, Missouri



TROJANS
TIE FOR FIRST PLACE
IN BIG FIVE LEAGUE
BASKETBALL

Troy	54	Elwood	27
Troy	57	Hiawatha	43
Troy	49	Horton	61
Troy	50	Effingham	31
Troy	62	Sabetha	57
Troy	44	Elwood	39
Troy	60	Robinson	42
Troy	51	Wathena	48
Troy	48	Horton	44
Troy	58	Highland	39
Troy	48	Effingham	41
Troy	70	Robinson	28
Troy	58	Sabetha	69

County Tournament

Troy	61	White Cloud	40
Troy	56	Bendena	44
Troy	33	Highland	51
Troy	55	Wathena	44
Troy	42	Hiawatha	56
Troy	55	Highland	51

District Tournament

Troy	72	Robinson	36
Troy	79	Highland	69
Troy	73	Powhattan	60

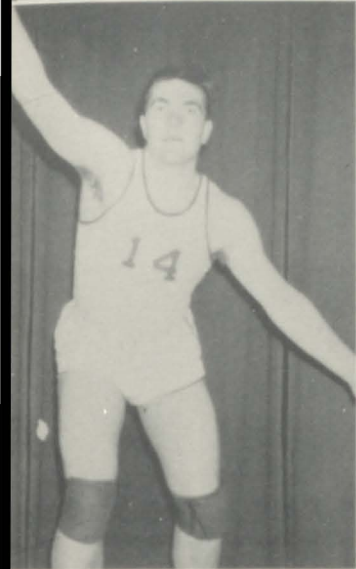
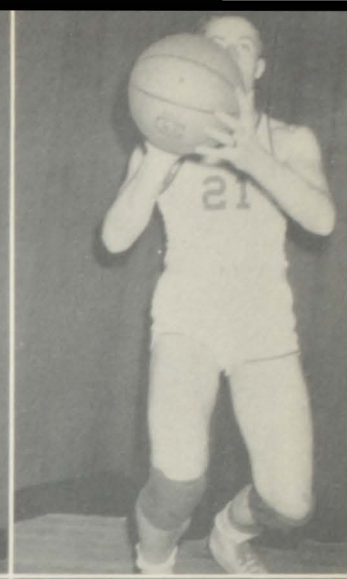
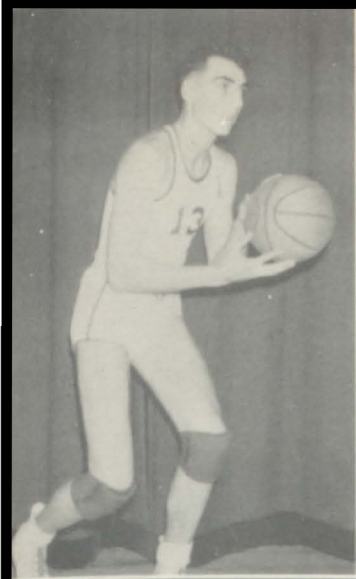
Regional Tournament

Troy	51	Silver Lake	44
Troy	34	Perry	59
Troy	63	Horton	50

Totals 1378 1173

20 wins, five losses

Regional, third place; District, first; County Second
Big Five co-champion.

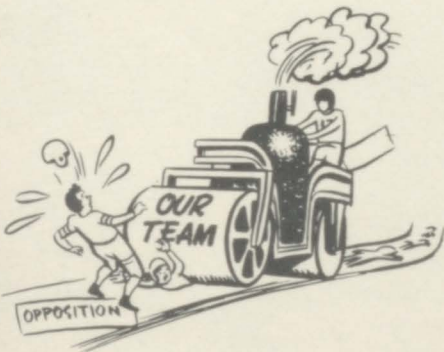


BILLY JOE BULLOCK
HAYDEN ELDER

CLARENCE HOWLAND
BILL HORNER

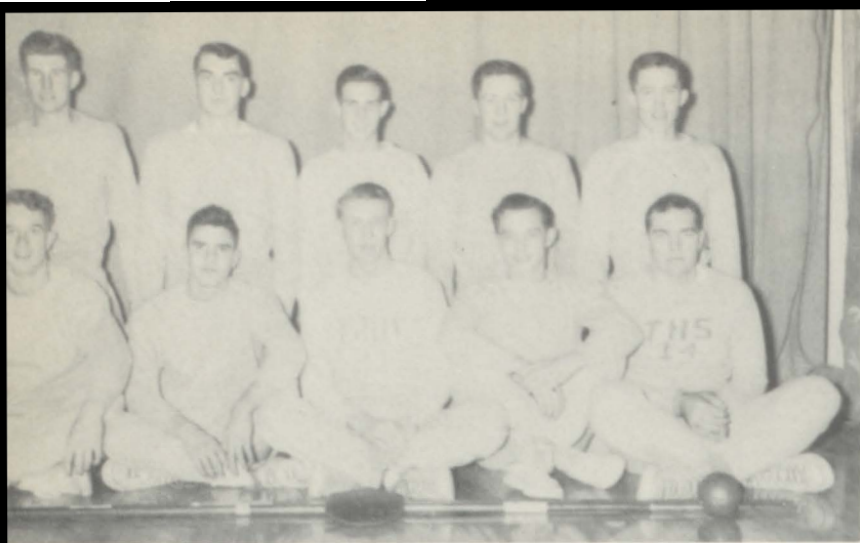
JIM GILMORE
BOB HANLAN

JERRY THOMAS
DELUS RICKLEFS

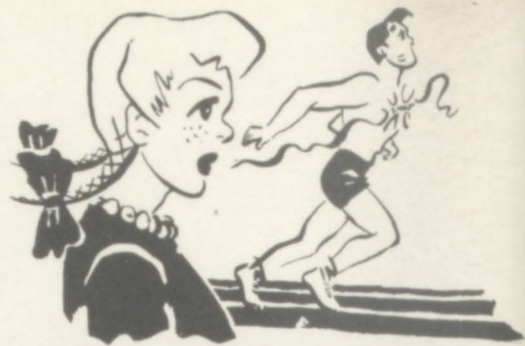


Compliments of
H. D. WILLIAMS
Auctioneer





Delus Ricklefs, Billy Joe Bullock, Leroy Nocks, Jerry Thomas, Bob Hanlan, Jim Gilmore, Wayne Martin, Clarence Howland, Marion Robertson, Hayden Elder.



Weight Men
Delus Ricklefs, Bob Hanlan, Hayden Elder, Jerry Thomas, Jimmy Gilmore,



Compliments of
ESHELMAN'S MUSIC STORE

St. Joseph, Missouri



Sprint Men
Billy Joe Bullock, Leryo Nocks, Wayne Martin, Clarence Howland, Marion Robertson.



Organizations

Chorus and Trio



Back row: E. Warren, Noyes, Knapp, Williams, Horner, Folsche, Gilmore; Ricklefs, Warren, Elder, Guy, Nocks, Folsche, Burkhart, D. Studer, Simpson, J. Studer, Mooney, Albers, B. Clary.

Middle row: Anthony Kimmi, Director; King, Ramsey, M. Howland, Gardner, Ragan, Koehler, Dannevik, Copenhafer, Ashworth, Foley, Timmons, Ford, G. Gibson, Lewis, Hollars, S. Whetstine, Lichliter, S. Fuller, F. Clary.

Front row: Zeltwanger, N. Sharp, Brenner, K. Gibson, Manyon, M. Fuller, Barnthson, Harter, Puckett, Sharp, Scott, Corf, Lehman, P. Clary, Glasscock, S. Sharp, Williams, Eastabrooks, Israel, Accompanist; Jon Burkhart.

The annual Christmas Cantata features the mixed chorus.



Judy Williams

Betty Clary

Elizabeth Warren

Accompanist,
Hallie Simpson

The members of the trio and accompanist are all Seniors and take an active part in music activities.

Glee Club



Back row: Warren, Gardner, Ragan, Snoddy, Knapp, Noyes, Folsche, Horner, B. Clary, S. Williams, Reder, Ramsey, J. Studer, Mooney, Albers, D. Studer, Lewis, Simpson.
Middle row: J. Wade, M. Whetstine, Newton, Manyon, Gibson, M. Howland, Rhunke, Hollars, F. Clary, Lichliter, Fuller, King, S. Whetstine, Glasscock, Dalsing, Ashworth, P. Clary, J. Williams.
Front row: Director, Anthony Kimmi; Brenner, Smith, Ward, Zeltwanger, N. Sharp, Dixon, J. Wade, King, Davies, C. Howland, S. Sharp, Israel, Thornton, Eastabrooks, Norris.



Back row: Gilmore, Ricklefs, Elder, Ashworth, Warren, Guy Burkhart, Folsche, Nocks, Timmons, Ford, Gibson.
Front row: Anthony Kimmi, Director; Fuller, Barnthson, Harter, Puckett, Sharp, Scott, Copenhafer, Koehler, Dannevik, Foley, Corf, Lehman.

GIRLS' SEXTET: Mary Noyes, Shirley Knapp, Jean Studer, Sarah Fuller, Barbara Mooney and Janice Albers. Accompanist, Mary Eastbrook.



BOYS' QUARTET: Maple Fuller Jr., Delus Ricklefs, Hayden Elder and Sam Warren. Accompanist Jon Burkhart.



BRASS SEXTET: Janice Albers, Elizabeth Warren, Maple Fuller Jr., Ted Campbell, Sam Warren and Shirley Knapp.



These musical groups take part in all school music activities and compete in the Lawrence and Sabetha music festivals.





Back row: Gardner, Ragan, Gibson, Clary, Lewis, Kimmi, Director; Mooney, Fuller, Brenner, Eastabrooks, Wade, Campbell. Middle row: Lichliter, Williams, Ford, Rhunke, Sharp, Folsche, Knapp, Albers, Williams, Johnson, King, Harter, Fuller, Copenhafer, Warren, Ricklefs, Ramsey. Front row: Noyes, Folsche, Newton, Horner, Warren, Howland, Manyon. The Band includes the Pep Band Marching Band and gives a Spring and Midwinter concert. They participate in Band, Day at Lawrence and the Big Five music festival every Spring.



Clarinet Quartet plays for musical programs and enters the Big Five and Lawrence contests in the Spring. Ann Folsche, Cecelia Lichliter, Marie Rhunke, Mary Noyes.

Majorette and twirlers are chosen by members of the band and provide the glamour for the band. Mary Eastabrooks, Vera Brenner, Sarah Fuller. Drum majorette, Barbara Moonney.





FLORENCE FORD, DONNA HORNER, SHIRLEY KNAPP, JUDY WILLIAMS



Cheer Leaders

Pep Club

Beside providing pep and enthusiasm at games, the Pep Club • homecoming activities and decorates the goal posts for home games. To earn a letter each member must attend ninety per cent of all the games.

Compliments of
LOCKWOOD'S

Atchison, Kansas

Top row: Left to right: Susie Ashworth, Cecelia Lichliter, Jean Studer, Barbara Mooney, Rosan Manyon, Kathleen Gibson, Yvonne Snoddy, Phyllis Snodgrass, Mary Howland, Opal Hollars, Joan Israel. Second row: Floey Clary, Elizabeth Warren, Kay Glasscock, Awanda Dixon, Janice Albers, Shirley Williams, Hallie Simpson, Mary Eastabrooks, Vera Brenner, Viola Newton, Phyllis Clary. Third row: Shirley Ragan, Shirley Gardner, Jean Thornton. Fourth row: Darlene Studer, Carrie Lee Howland, Wanda Smith, Fifth row: Sarah Fuller, Mary Noyes, Shirley Knapp, Front row: Florence Ford, Judy Williams, Ann Folsche and Donna Horner.



Ford, Treasurer; Williams, President; Folsche, Vice President; Horner, Secretary
Sponsored by MRS. ANNA GOSS

T-Club



Selecting the outstanding T.H.S. student of the year and the Christmas formal are two of the big activities sponsored by the T-Club. Also they are in charge of the noon candy sales, and sold Trojan T-shirts, and football and basketball pencils. Members are: First row: Hayden Elder, Jerry Thomas, Business Manager, Bob Hanlan, Vice President, Ronnie Ashworth, President, Johnny Bracken, Secretary Treasurer, Clarence Howland, Sargent at Arms, and Marion Robertson. Second row: Bobby Jack Been, Sam Warren, Jon Burkhardt, Tommy Chapple, Ronnie Clary, Wayne Martin, Walter Crouch. Third row: Coach Kimble, Billy Jo Bullock, Delus Ricklefs, Richard Folsche, Arthur Newton, and Jimmy Gilmore.



Johnny Bracken, representing the remains of Highland on the T-Club float, dangles convincingly during the Homecoming Parade, November 14th. Other T-Clubbers on the float are Jack Jasper, Johnnh Speaks, Jerry McKernan, and Marion Robertson.

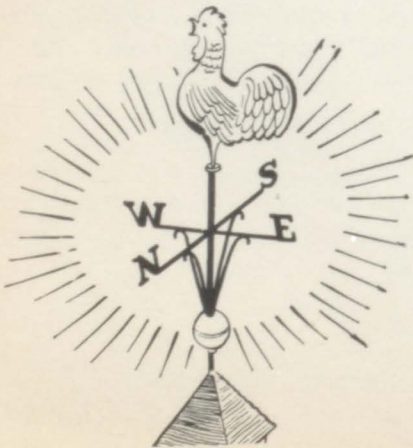
Compliments of
CAMPBELL OIL COMPANY

F.F.A.

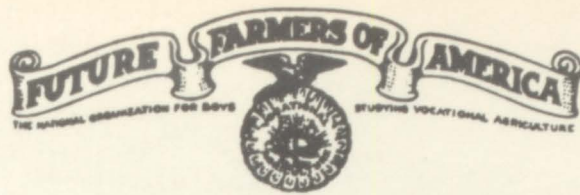
Sweetheart



Donna Horner was chosen F.F.A. Sweetheart at the barn-warming, October 10. Donna and the president of the F.F.A., Hayden Elder, are pictured on the tractor purchased this year by the F.F.A. Chapter.



Compliments of
OSCAR MAYER



First row: Melvin Sharp, Jerry Puckett, John Lehman, Joe Scott, Merle Corf, Danny Foley, Dale Harness, Donald Sharp, Buddy Fuller. Second row: Alan Johnson, Wilbur Miller, Dale Sharp, Secretary; Dennis Ford, Buddy Schoenfelder, Danny Millins, Wallace Schoenfelder, Leo Neuman, Floyd Fitzgerald, Billy Horner, Lee Koehler, Marion Robertson, Treasurer; Sam Warren, Reporter; Hayden Elder, President; Billy Franken, Mr. Kuenzi, Sponsor; Third row: LeRoy Sharp, Jimmy Gilmore, Billy Jo Bullock, Delus Ricklefs, Richard Folsche Sentinel; Henry Bibb.

The Vocational Agriculture Department and the F.F.A. Chapter have completed the most successful year of their youthful lives as a part of Troy Rural High. The past year has seen the accomplishment of several activities, the most outstanding of which was the purchase of a new tractor and equipment. The Chapter rented 25 acres of land on which was grown 675 bushels of field corn and 750 pounds of popcorn. The proceeds from the sale of the crops were applied on the purchase price of the tractor. Chapter members contributed the necessary labor and management for this project.

Sponsored by TWOMBLY ELEVATORS



TROY APPLE GROWERS ASSOCIATION

Feed and Fertilizer

Apples in Season

Phone 88

Student Council

The school Christmas tree is one of the projects sponsored by the student council. The group is composed of the president and a representative from each class. Back row: left to right: Opal Hollars, Sophomore; Mary Noyes, junior; Bob Guy, sophomore; Bobby Jack Benn, junior. Front row: Jack Ainley, freshman; Judy Williams, senior, secretary; Darlene Studer, freshman; Hayden Elder, senior, president.



National Honor Society

The National Honor Society sponsored by Miss Rhudy, is composed of Sam Warren, treasurer, Elizabeth Warren, president; Judith Williams, vice-president; and Mary Noyes, secretary. Members are chosen by a unanimous vote of the faculty on leadership, scholarship, character, and service.



1. Trojan cheerleaders. 2. Smiling Shirley Sharp. 3. Delus and Nora Ann Ricklefs on vacation in 1948. 4. Home Economics II. girls serve breakfast to guests. 5. Couples at F.F.A. Barnwarming. 6. T. H. S. Band at Band Day Parade at Lawrence. 7. Our cook-Veda Simpson. 8. Football float in homecoming parade. 9. B-Team "MEN" 10. Mary Noyes campaigning for Mayor in school election. 11. Know these ball players? Jerry McKernan, John Speaks, and Wilber Copenhafer. 12. Bands in formation at Band Day at K. U.

Miss Rhudy and students enjoy library privileges.



Compliments of
TRIPLETT PRODUCE



Typing class takes a
Time test under the direction
of Miss Kanoy.

Boyles law apparatus is being explained to the physics class by Mr. Gampper.



Compliments of

TROY FURNITURE and HARDWARE



Home Economics II Class prepare and serve meals in the modern, first-floor kitchen.

Coca-Cola

Hund And Eger
Bottling Company
St. Joseph, Missouri
Have A Coke



Carl May

Earl May Seed Company

3rd Felix
Phone 2-7375

St. Joseph, Missouri



Martin
CLEANERS

Phone 56

Troy, Kansas

School Board

R. F. Noyes
Ben Williamson
Dan Kinsey



Compliments of

The
Gard

Business University

Frederick Avenue At 9th Street - Phone 4-1611

St. Joseph, Missouri

73 Years Continuous Service



Joe Optican Jewelers

Watches - Jewelry
Diamonds

Phone 4-0371

725 Felix

St. Joseph, Missouri



Phone 89
Sales



Troy, Kansas
Service

DONIPHAN

County Equipment Inc.

Farmall Tractors

International Trucks - McCormick Machines

International Harvester Refrigeration



LARZELERE

Hi-Way Service

Phone 66

Troy, Kansas

L & V Cafe

Inez
Caroline
Lena

Bertha
Velma
Lloyd



Phone 91

Troy, Kansas



Henry Eader

E. E. Doughty

Thelma Horner

R. F. Noyes

Troy State Bank

Phone 131

Troy, Kansas



Service Battery 154th Field Artillery Battalion

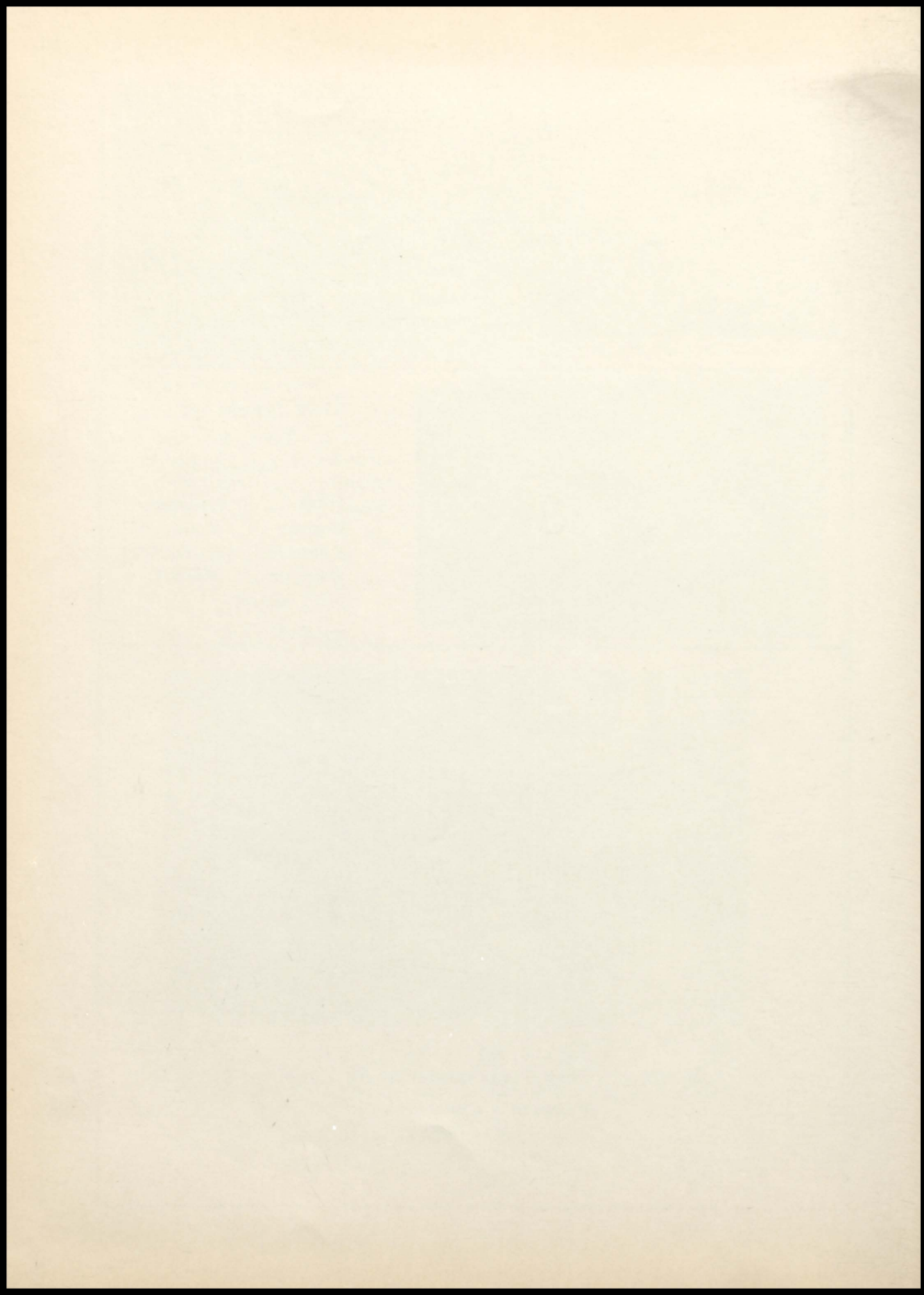


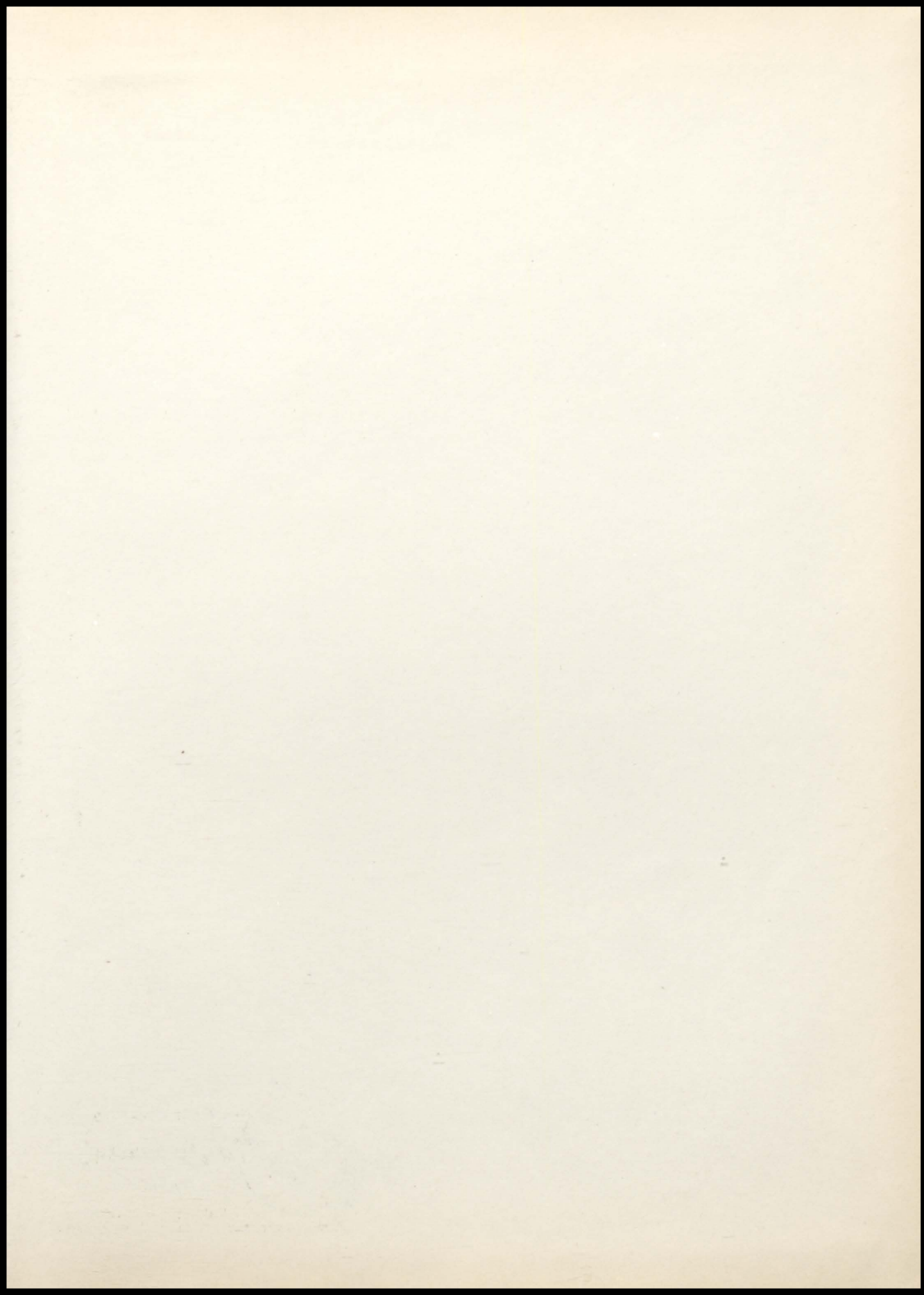
Burbridge Service
Phone 181
Troy, Kansas
Attendants

John	Bracken
Homer	Yoder
Francis	Burbridge
Warren	Wiedle



This Floor Finished By
Hillyard's Chemical Co.
St. Joseph, Missouri





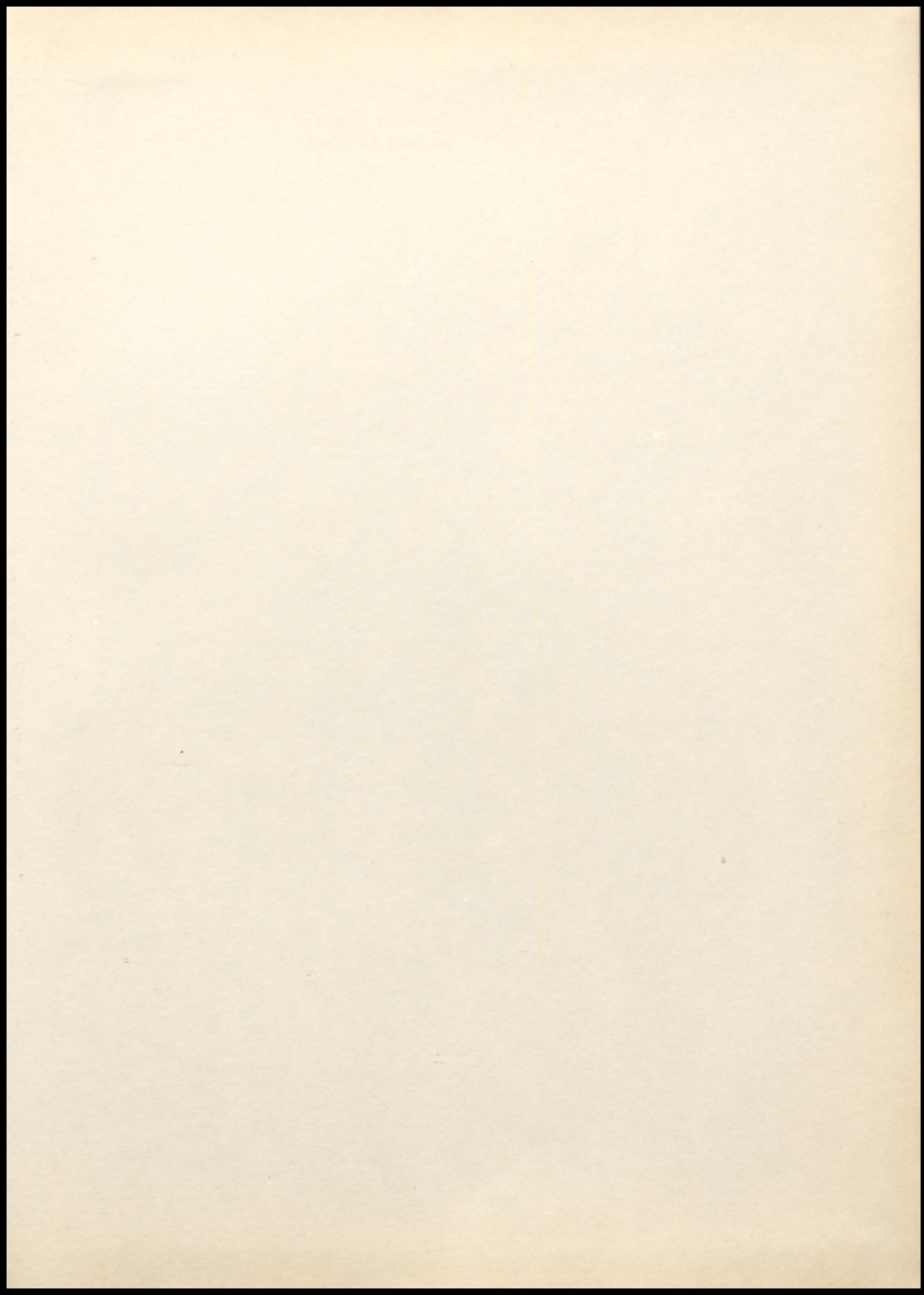


A LITHOGRAPHED

Taylor-made

YEARBOOK

DALLAS • TEXAS





William Joseph Bullock



Florence Louise Ford



Jerry K. Dubach



Donna Ellen Horner



Teddy Mansel Campbell



Ann Lorene Folsche



James Lawrence Gilmore



Patricia A. Miller



C.W. Trogdon
Prin.



Barbara Sinclair
Spon.



Betty Darlyene Sharp



Hayden O. Elder



Shirley Florene Sharp

TROY

1953

Stratmann
St. Joseph, Mo.



Floyd J. Fitzgerald



Ronald Leroy Ashworth



LeRoy Francis Sharp



Betty Ruth Clary



Mark Ronald Clary



Judith Williams



Floey Jean Clary



Haile Katherine Simpson



Dale Edward Sharp



Norma Jean Thornton



John Robert Bracken



Elizabeth Ellen Warren



Thomas J. Chapple



Robert Dwayne Hanlan



Vera Louise Brenner



Wayne Charles Martin



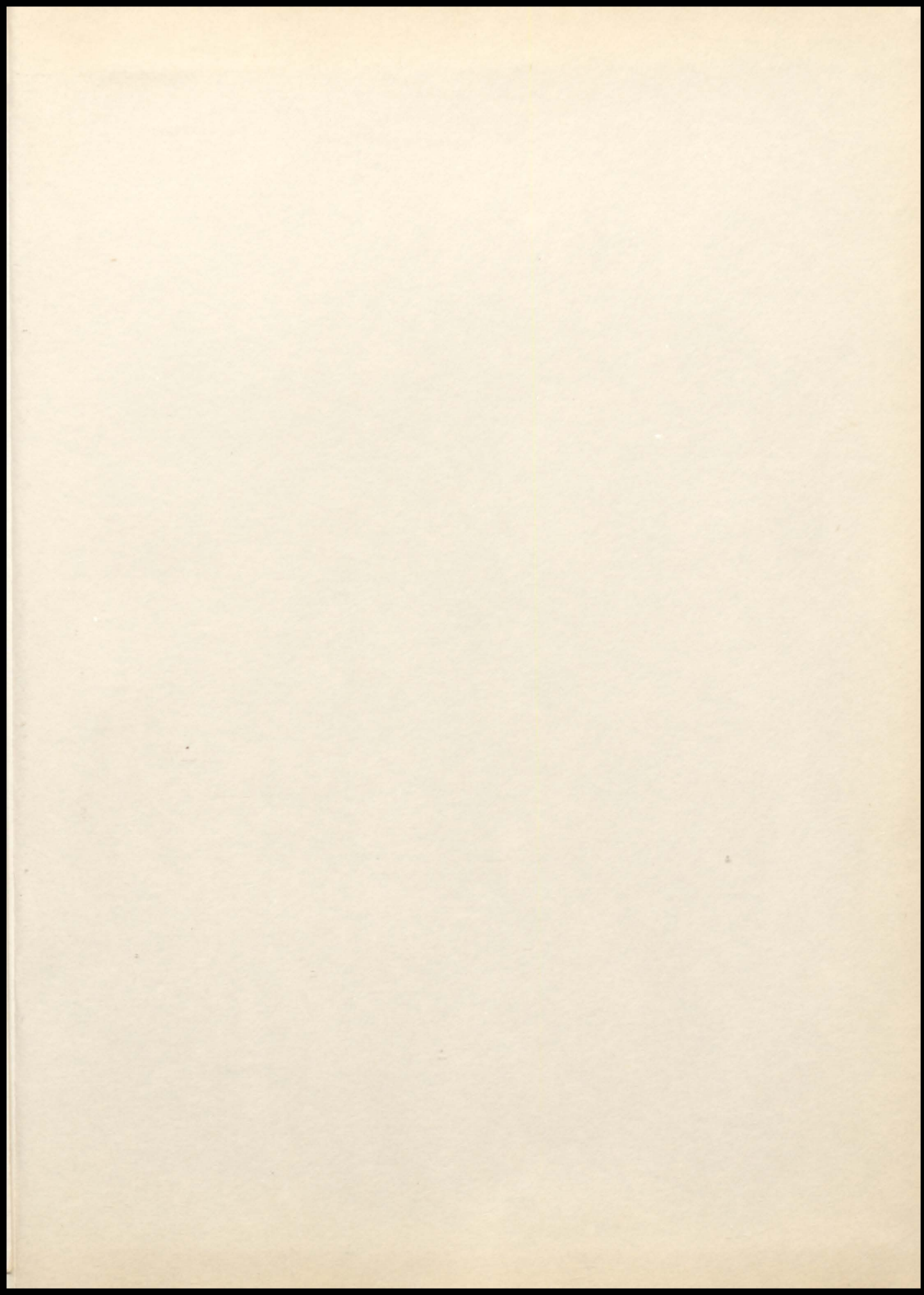
Gerald Ernest Thomas

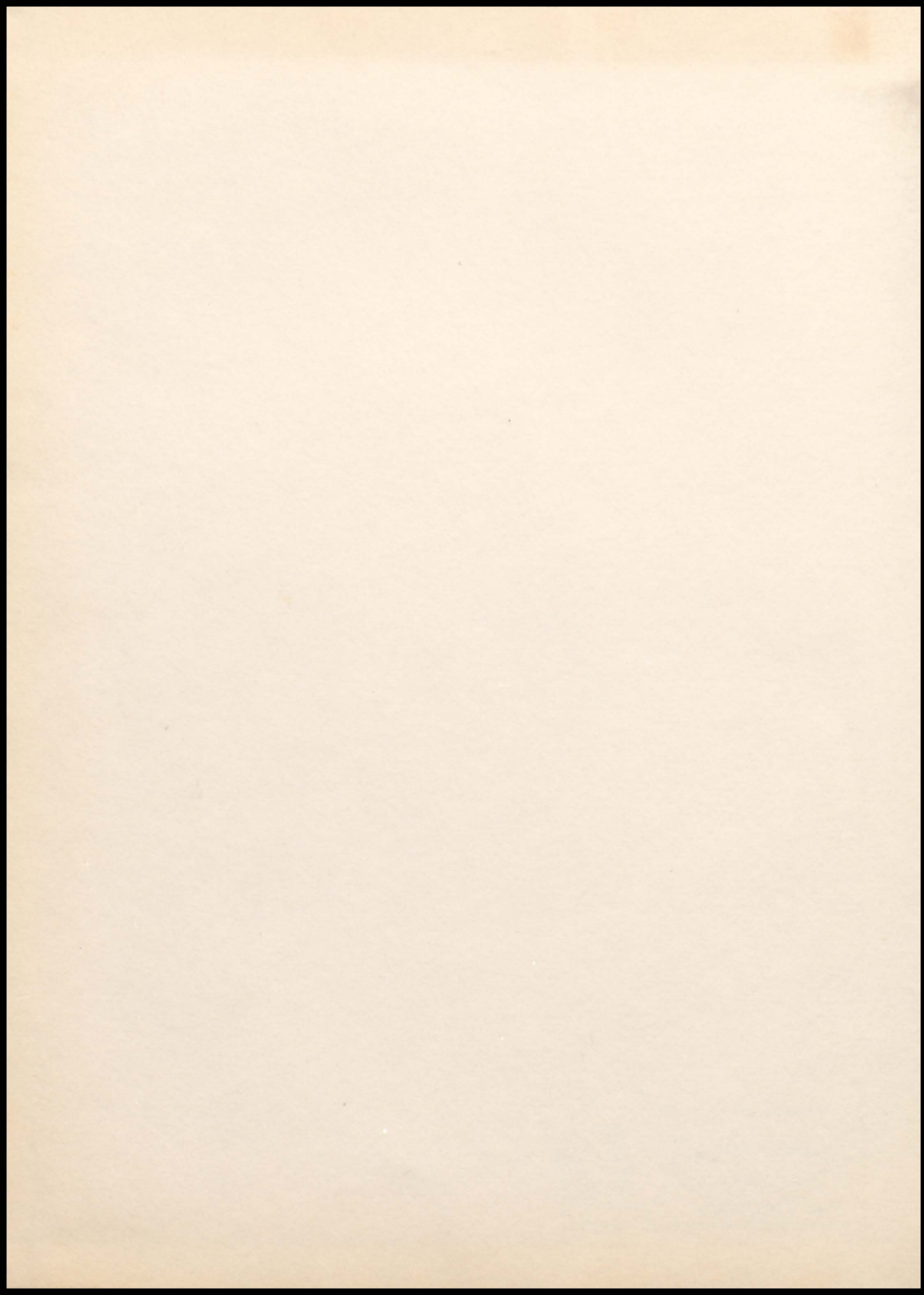


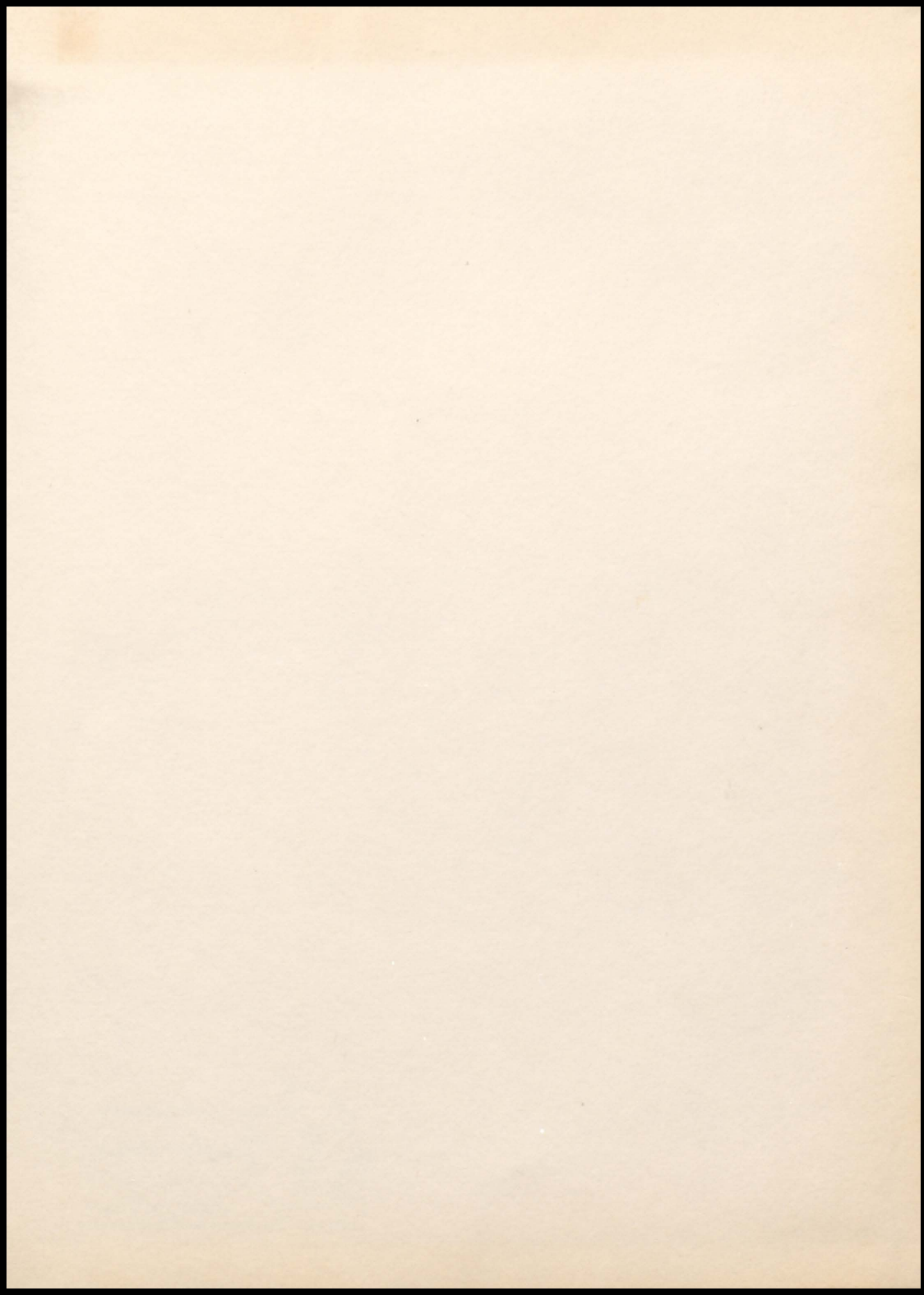
Bonnie Belle Savage

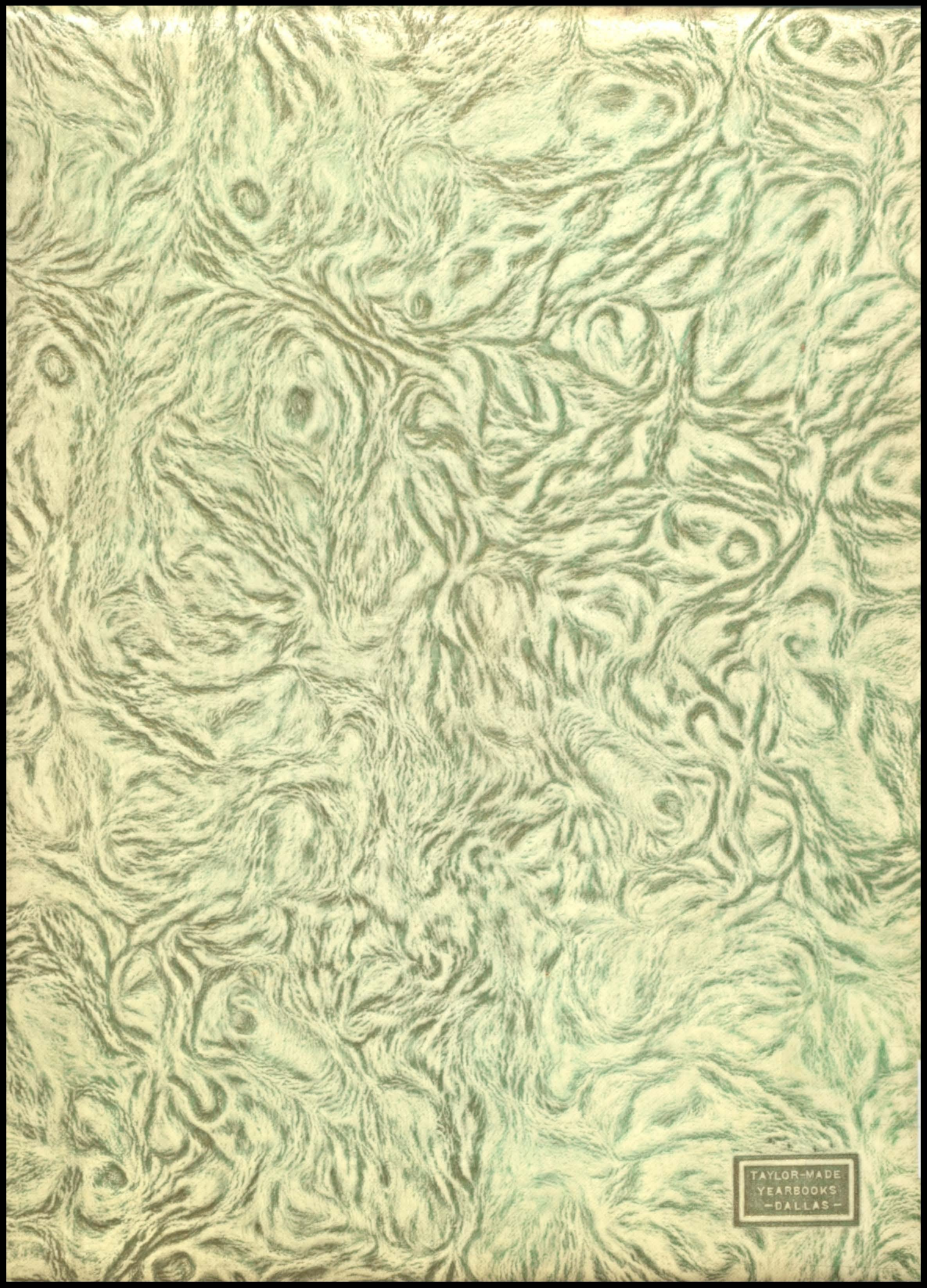


Delus W. Ricklets









TAYLOR-MADE
YEARBOOKS
-DALLAS-

